

HOW TO 3D PRINT WITH THE ULTIMAKER S5 USING THE CURA SOFTWARE

Operating The S5



Version v1

Published December 29, 2022

Author Don Gillard

Langara College Makerspace

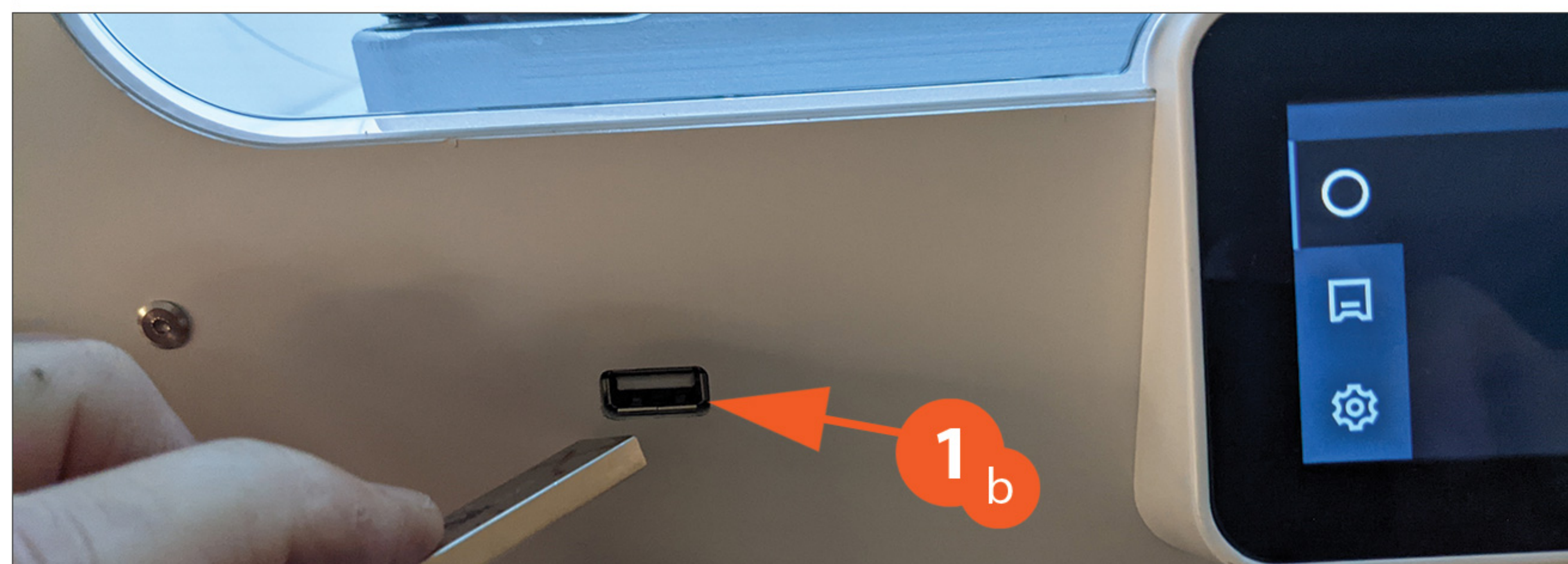
All rights reserved, Langara College 2022-23



1

1a - Turn on the Ultimaker S5, the power switch is at the back.

O is On, **I** is Off.

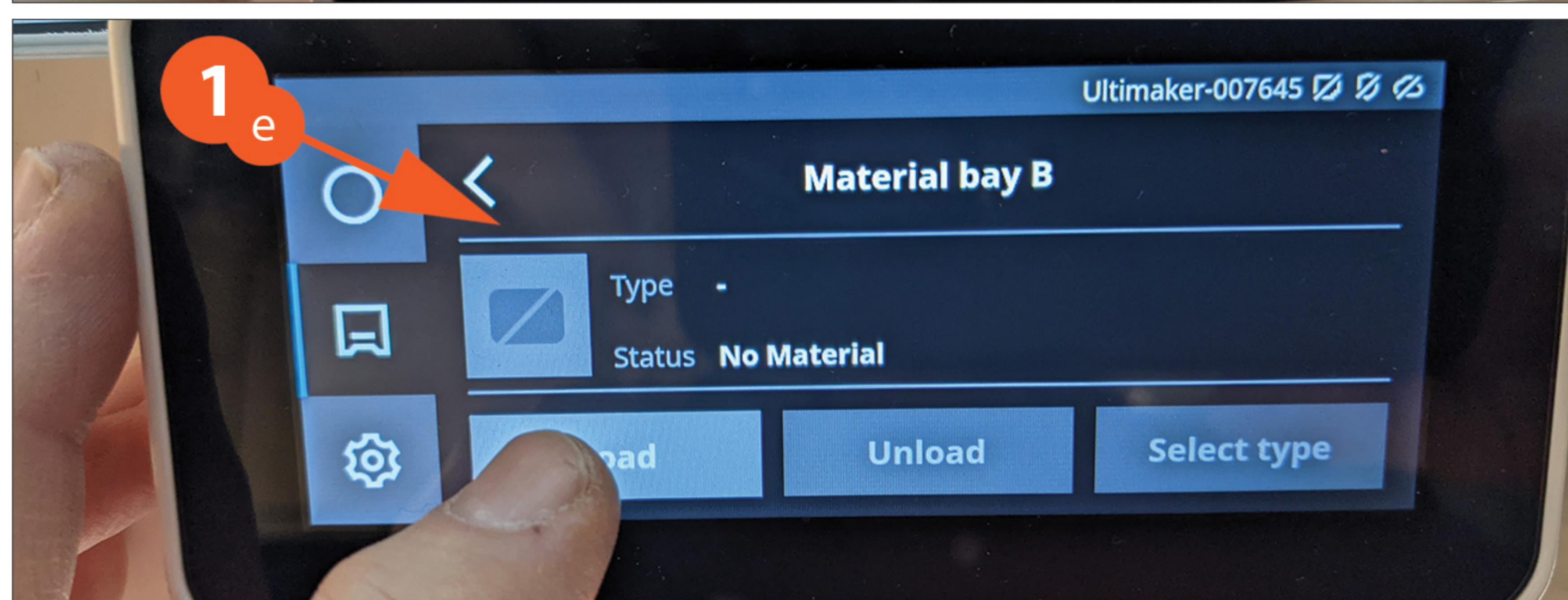


1b - Plug your USB into the front USB slot.



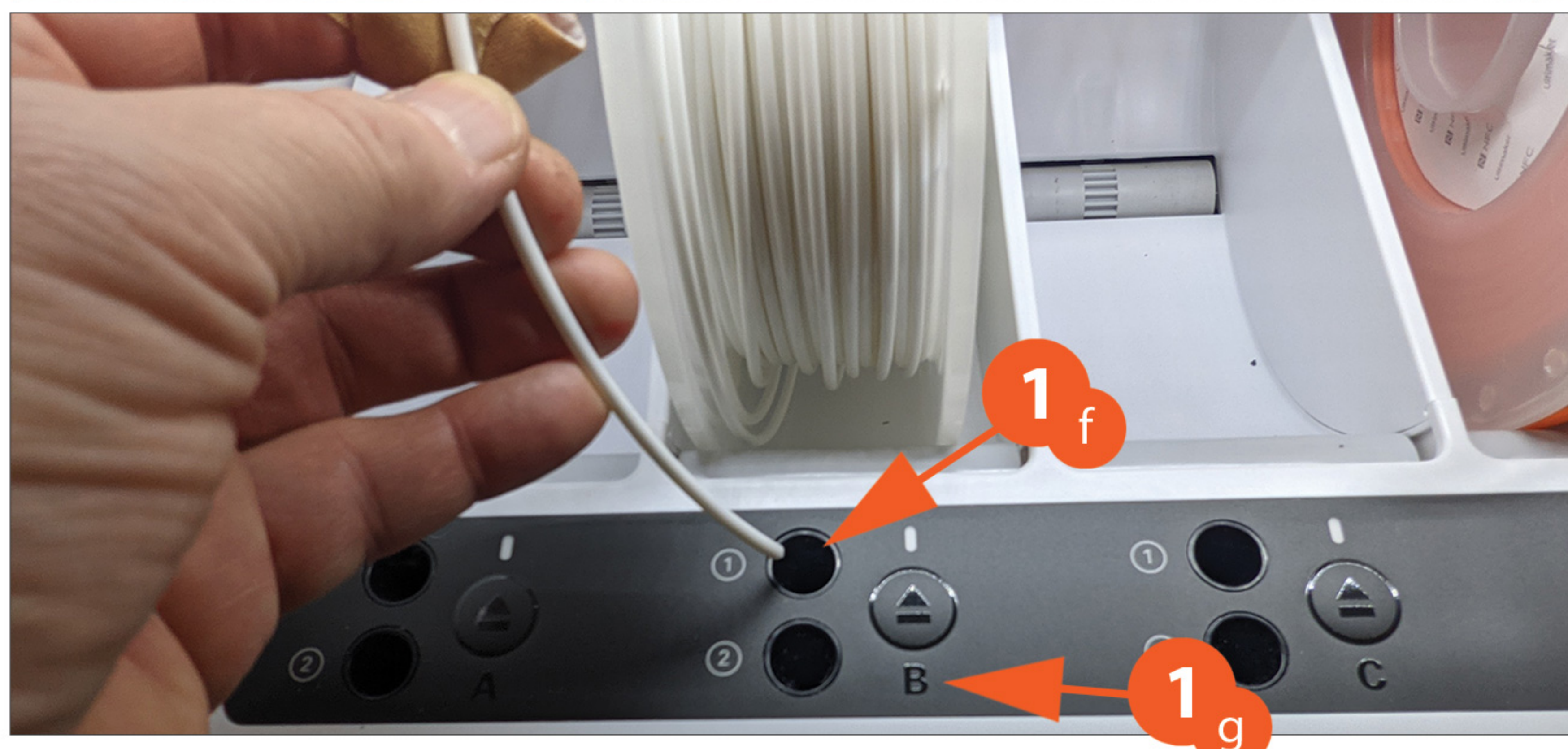
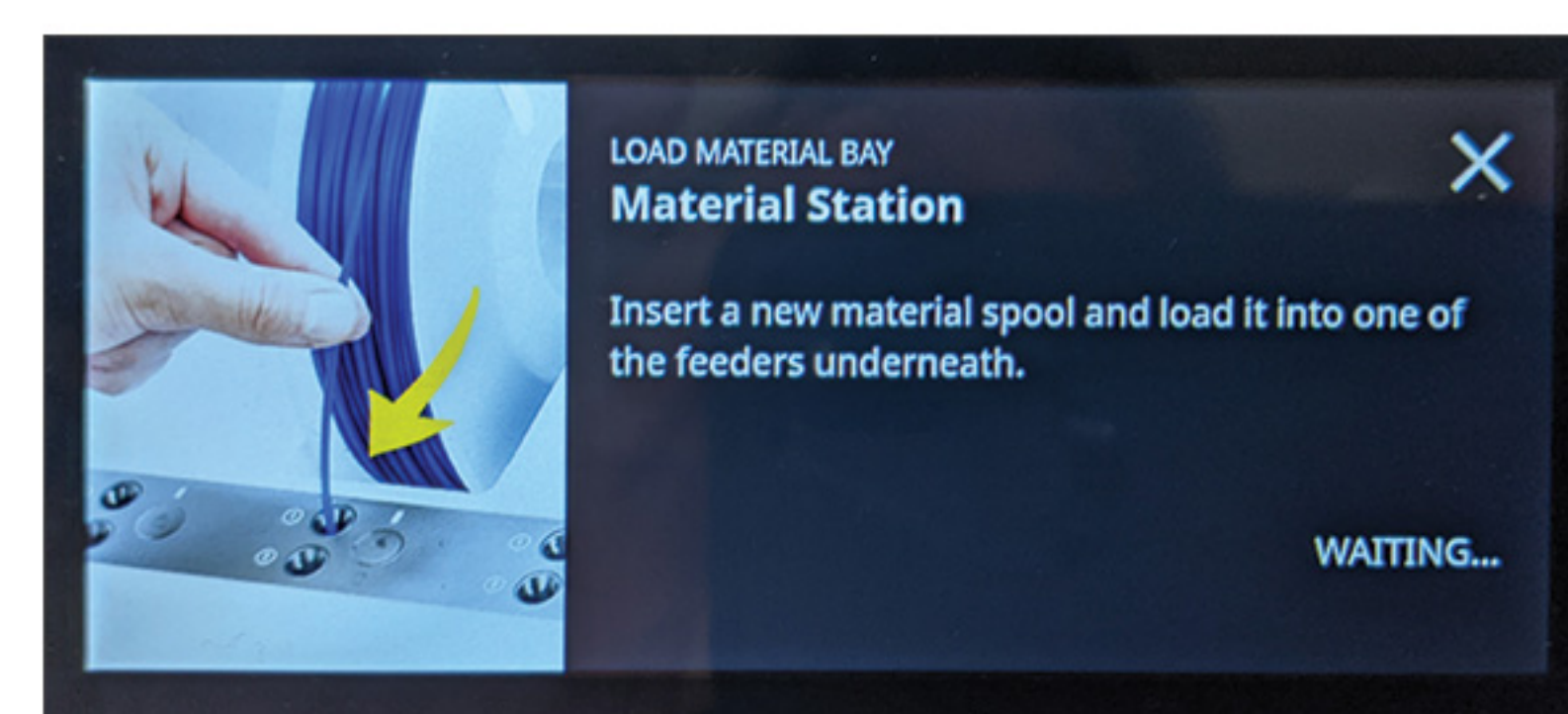
1c - Select the second **Icon** (printer icon).

1d - Then select the **Letter** where your first material is.



1e - Select **Load** material.

You will see this menu popup...



1f - Then open the Material Station door, and insert your material filament into the #1 hole...

1g - At the **B** material (or the letter that your material is in).

Then push it in until you feel it grab the filament.

2

2a - You should now see head #1 - AA 0.4 linked to ABS White (or the colour you choose).

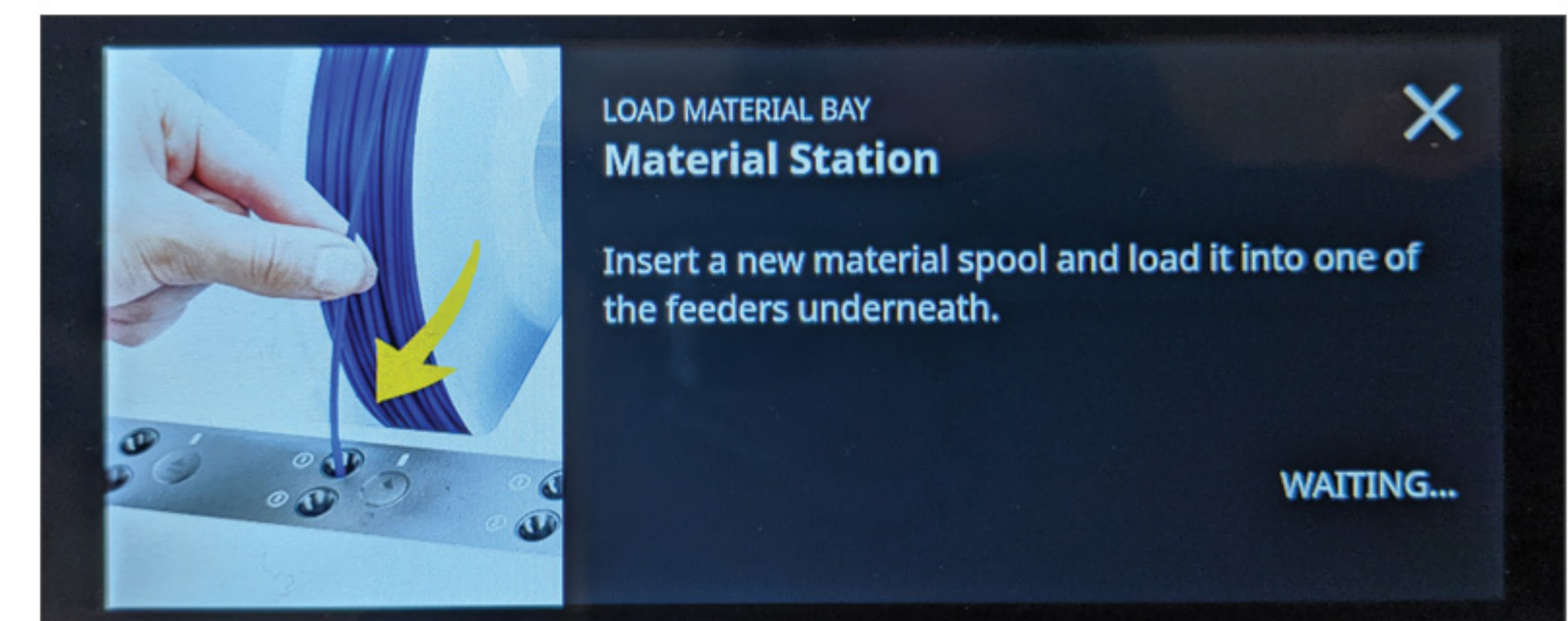
Please note:

You must use the exact settings on the S5 printer as your setup in Cura, otherwise it will not print.

2b - Now select the **letter** where your second material is, or as in our demo the PVA.

2c - Select **Load** material.

You will see this menu popup...



2d - Then open the Material Station door, and insert your material filament into the #2 hole...

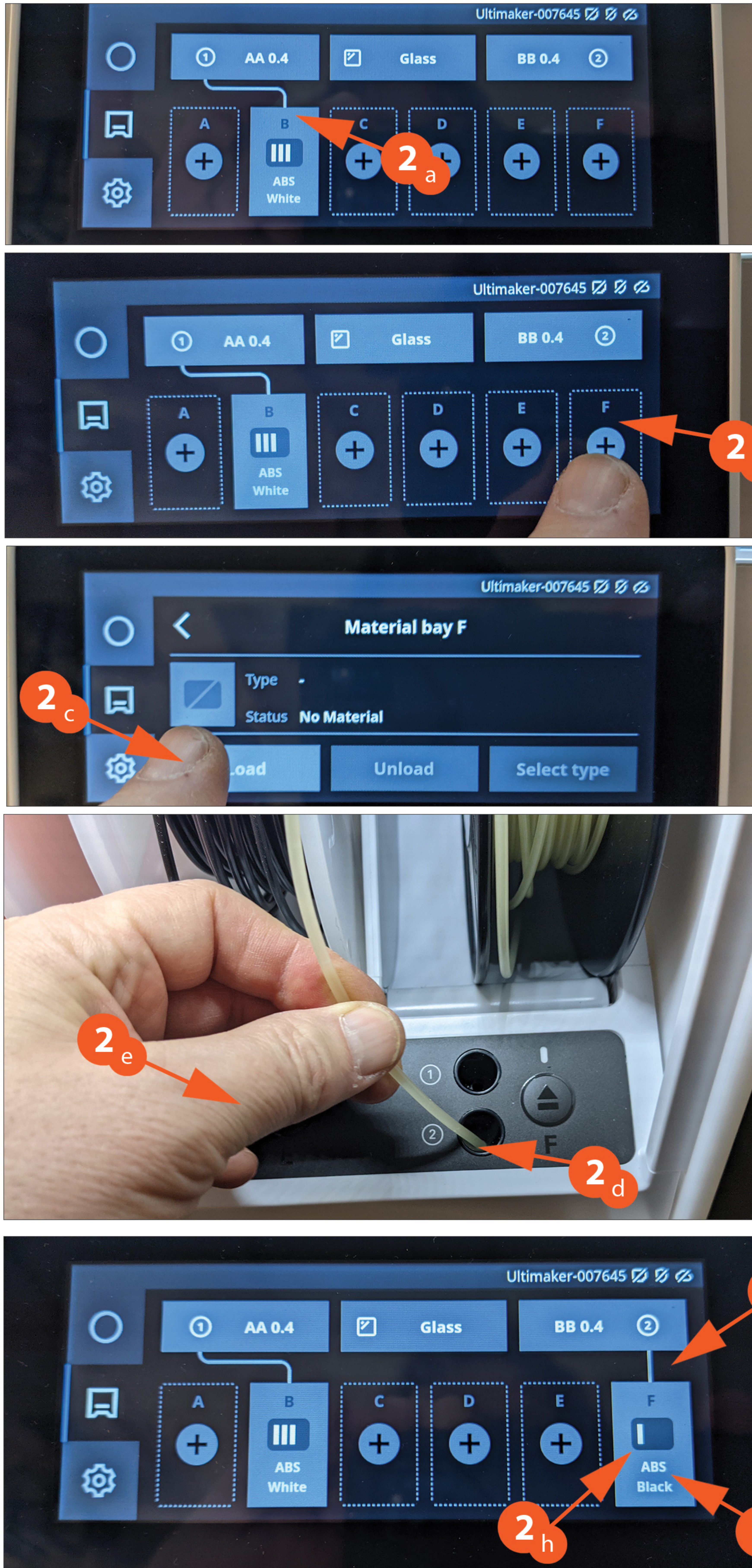
2e - At the F material (or the letter that your material is in).

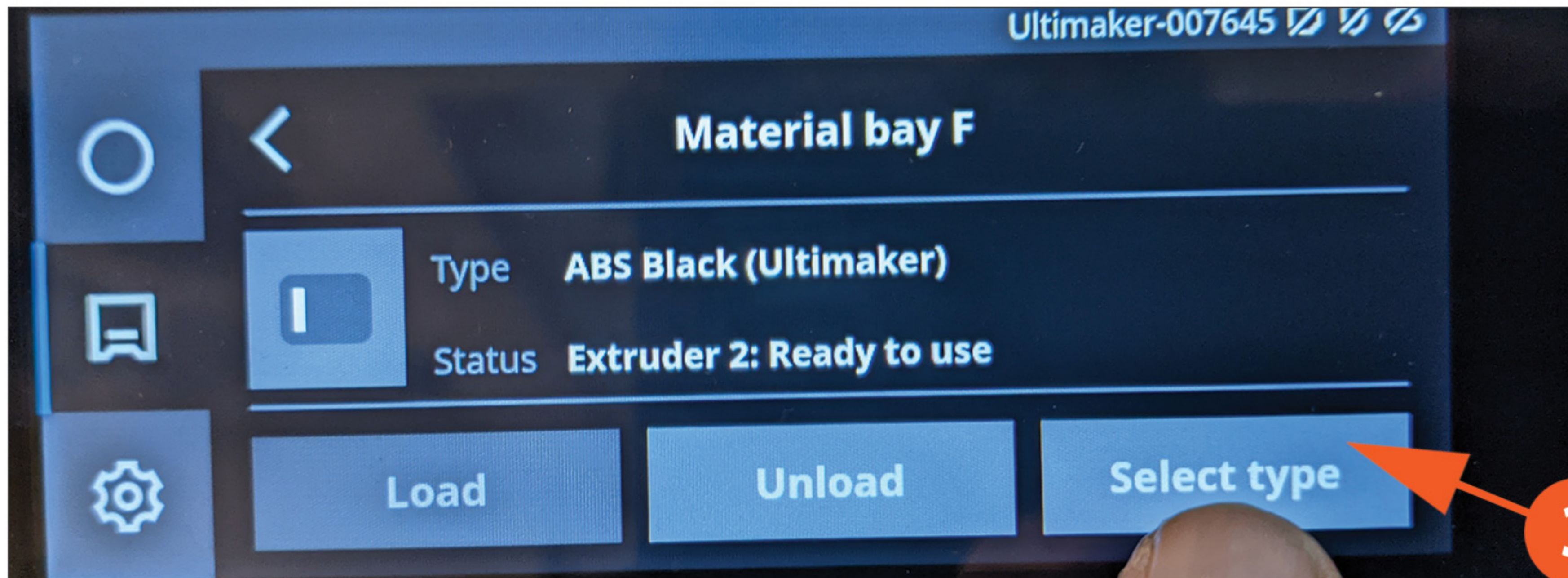
Then push it in until you feel it grab the filament.

2f - You will see this screen now...

2g - And it may not be the material you loaded.

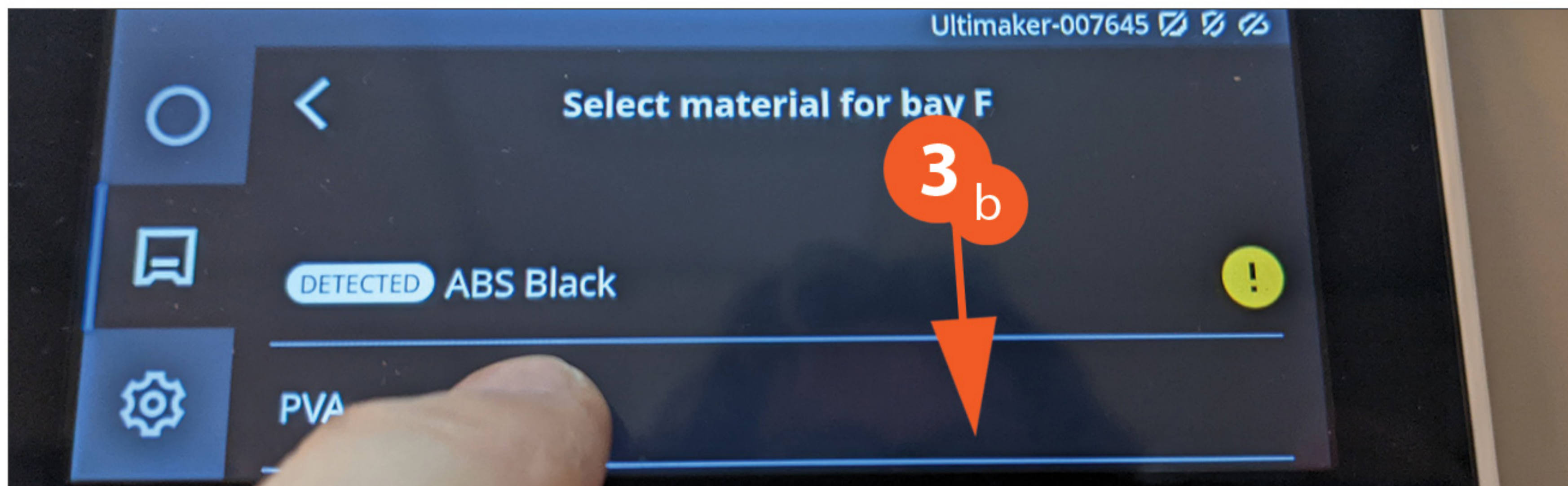
2h - To change the material, Click on the material box.



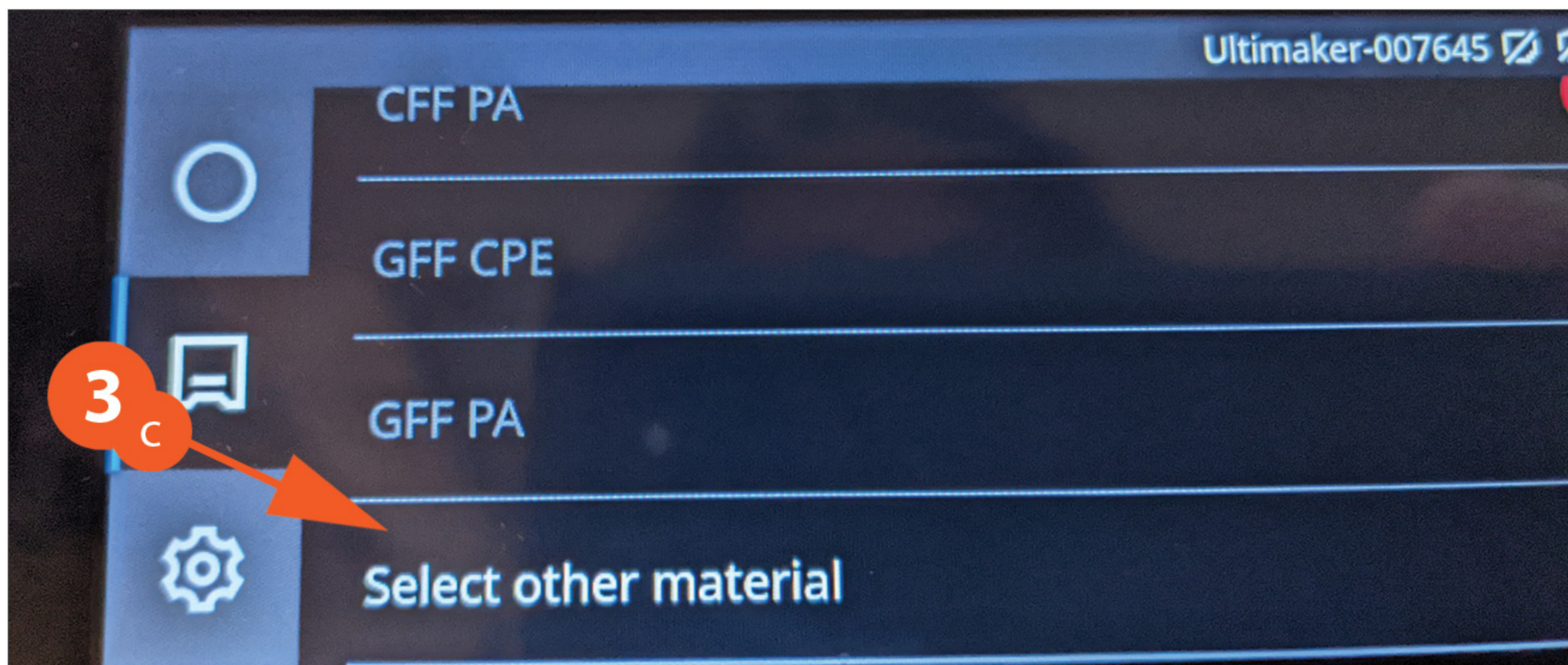


3

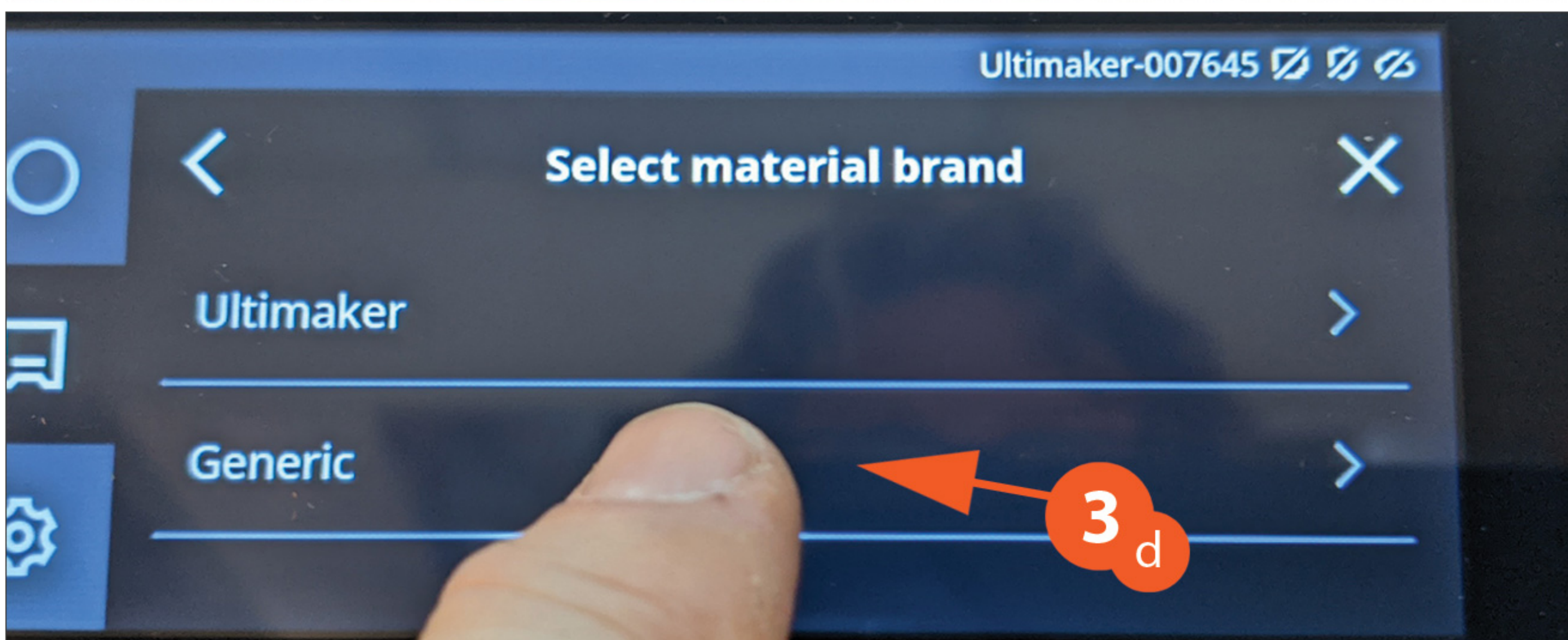
3a - Click on **Select Type**.



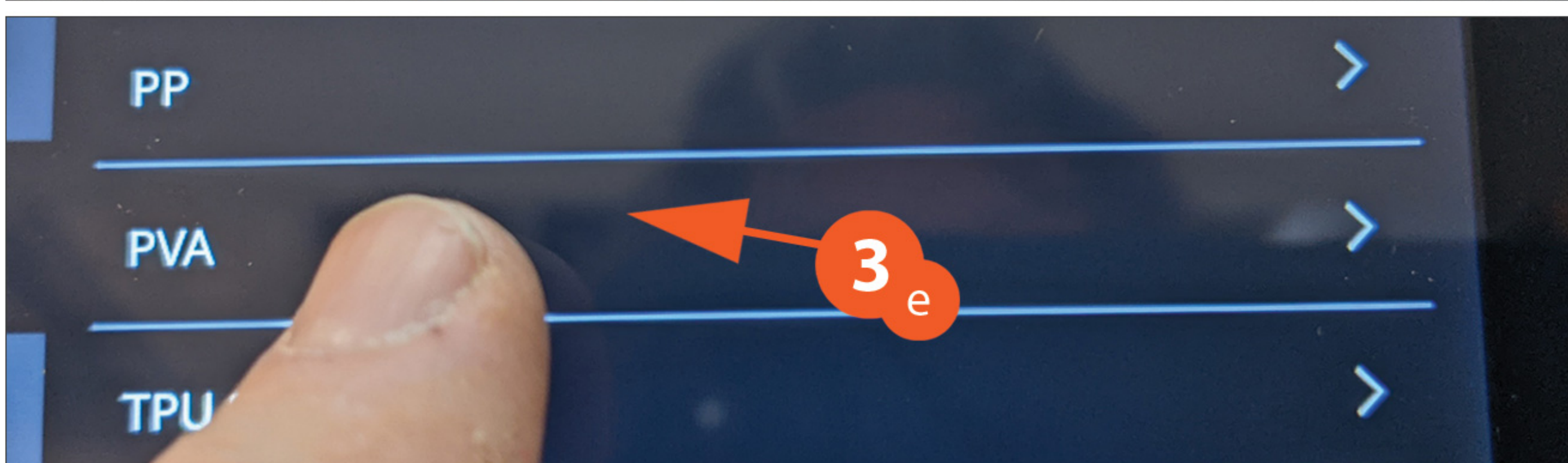
3b - Scroll down the list.



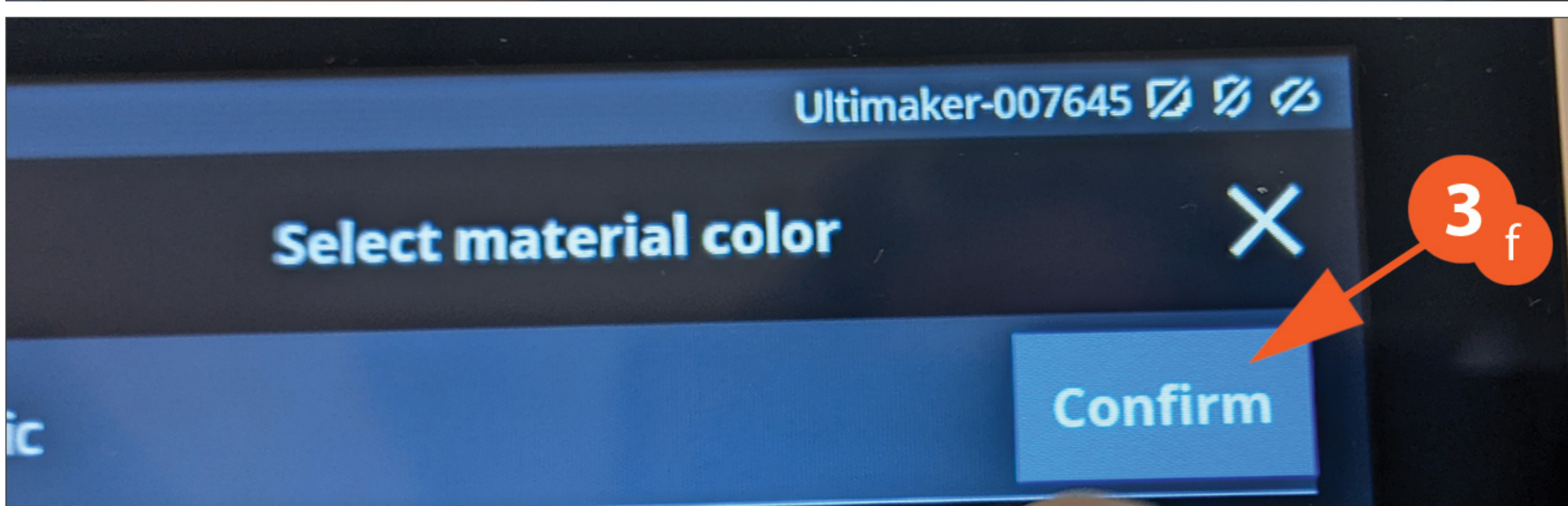
3c - To **Select Other Material**, click on it.



3d - Click on **Generic**.



3e - Then click on **PVA**.



3f - Click on **Confirm**.

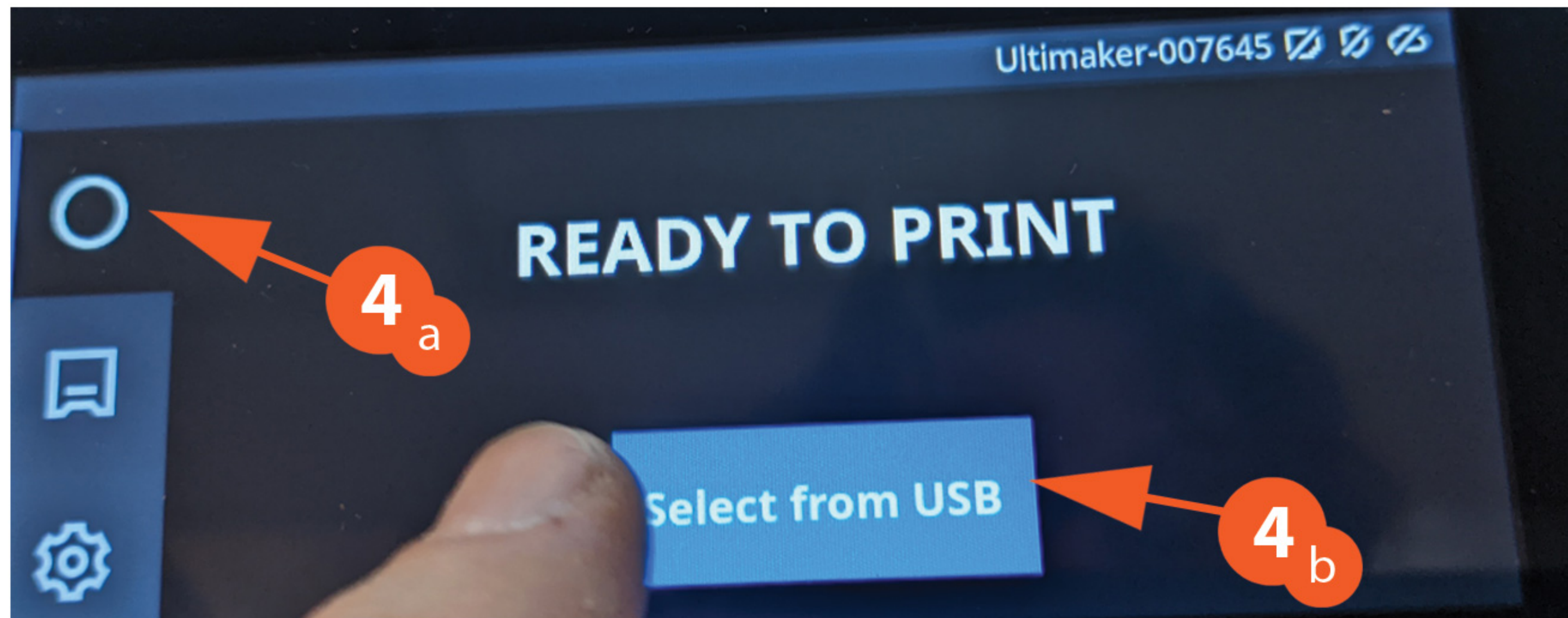
4

4 - You should now see both of your materials on the **Print Screen**.

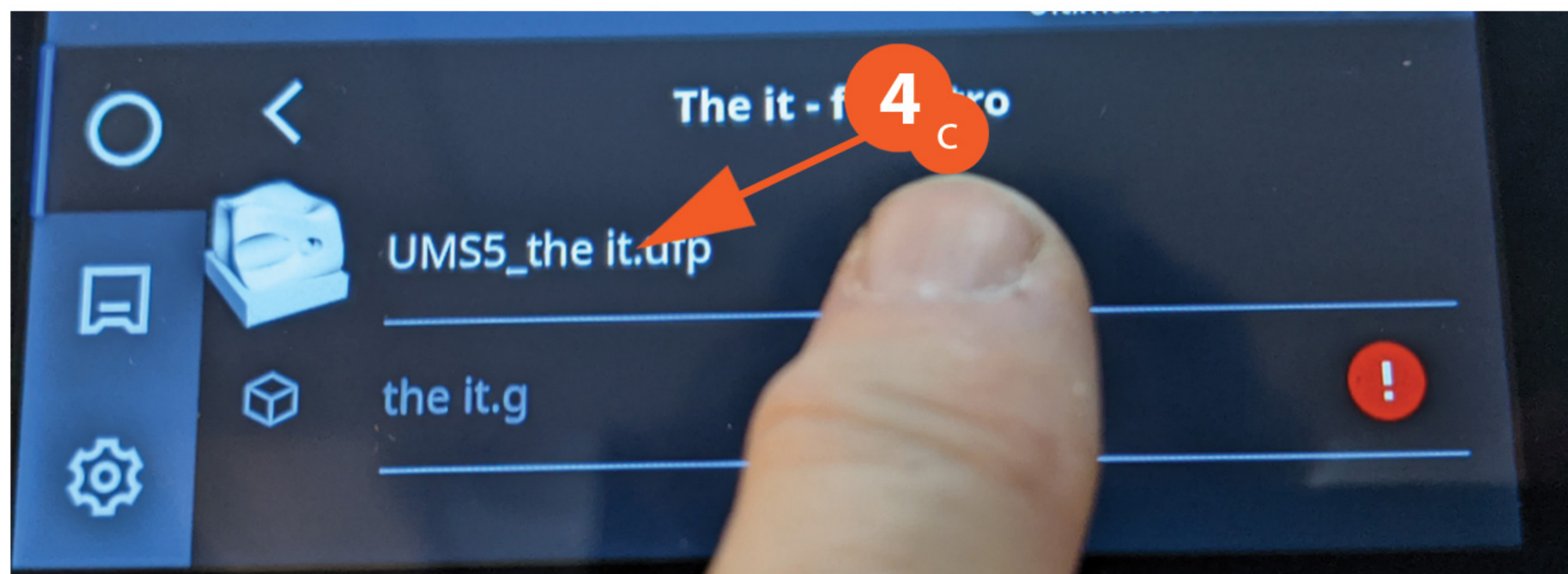


4a - To start your print, Click on the first top left icon.

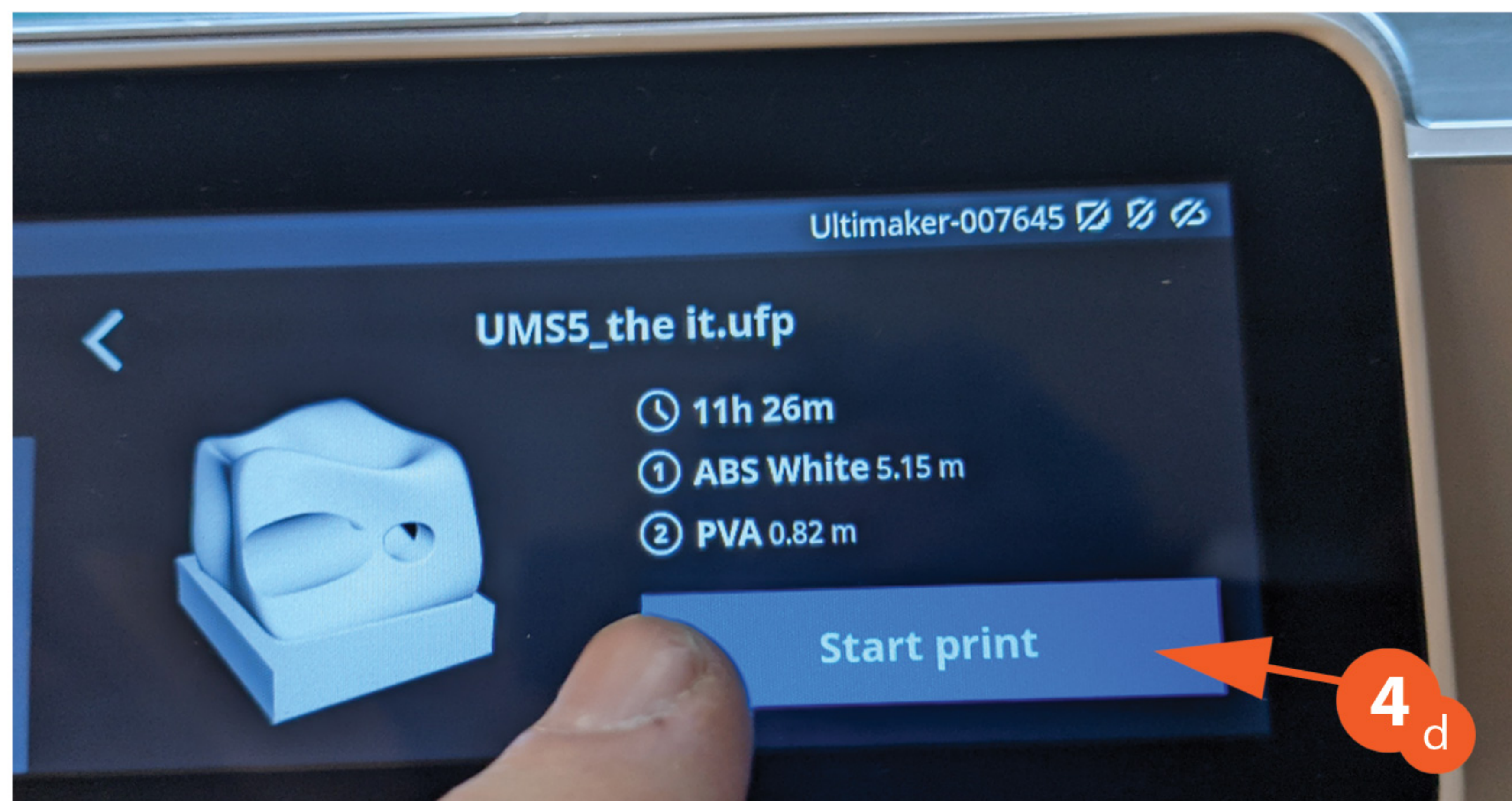
4b - Click on the **Select From USB** button.



4c - Click on your file.



4d - Click **Start Print**.



If you do not have the same materials loaded as specified in your print, the print will not start.

Keep an eye on your print for the first hour. If it is peeling up, warping or not sticking to the glass platform you will need to stop the print.

Ask the tech how to proceed if this happens.

