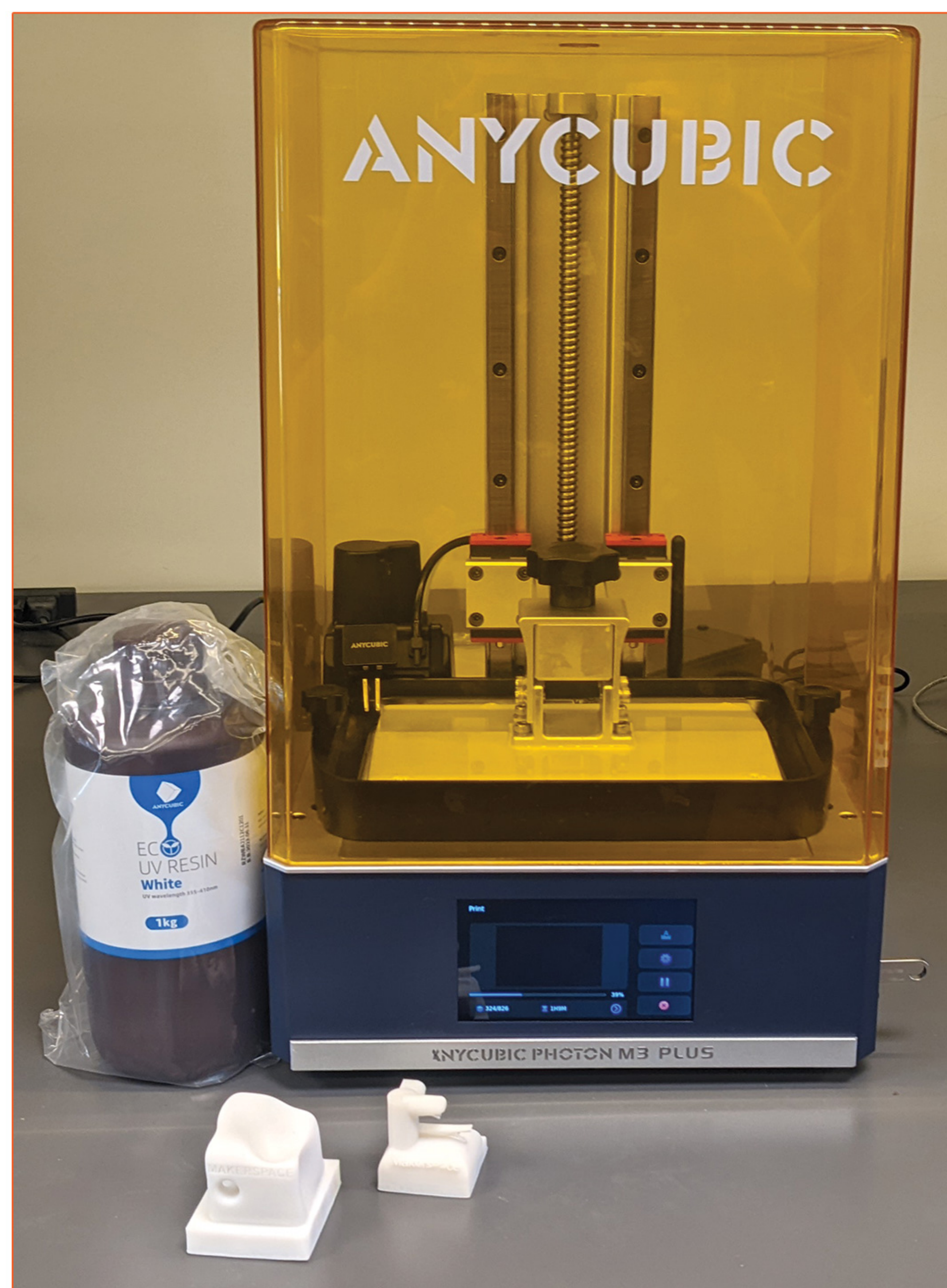
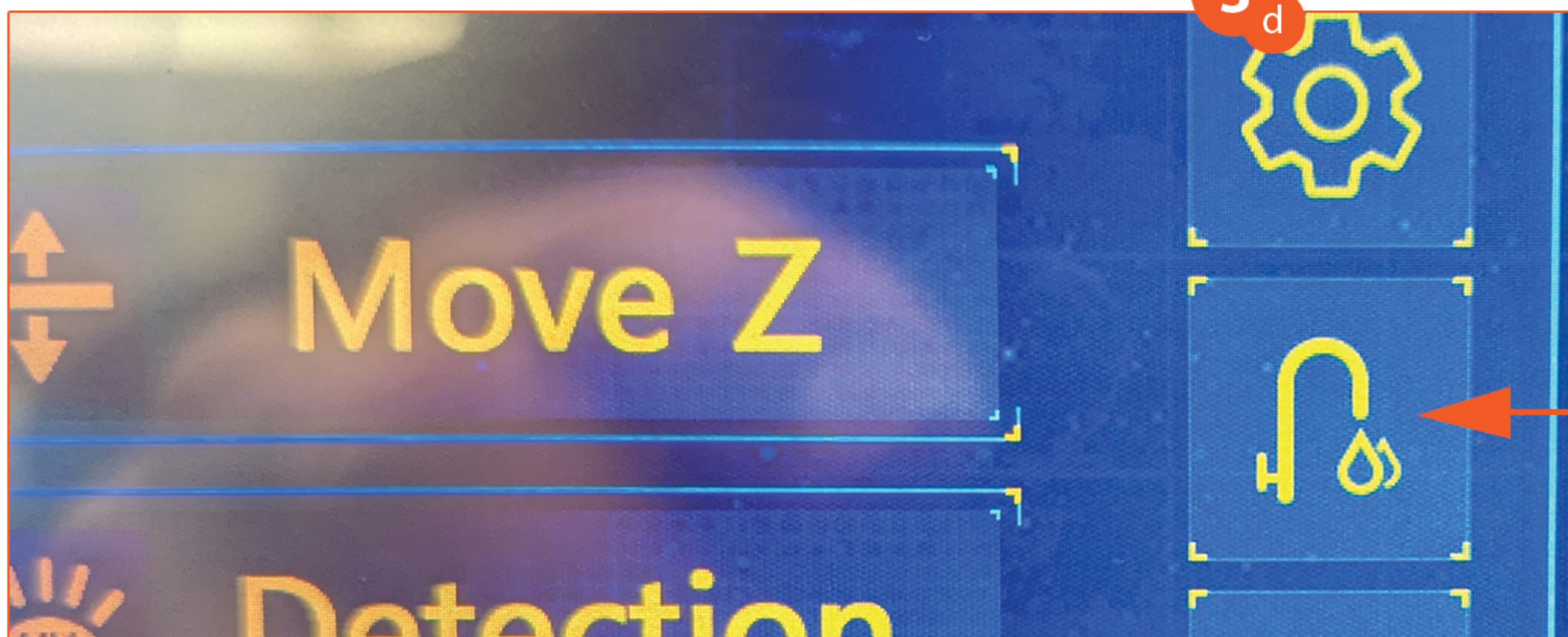
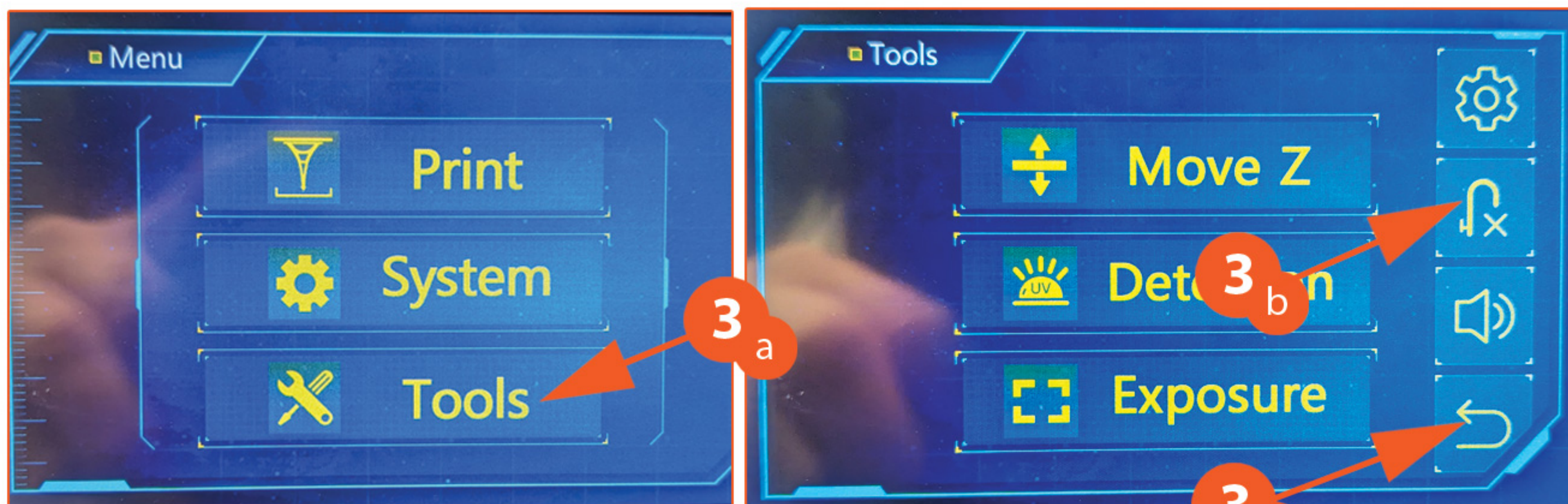
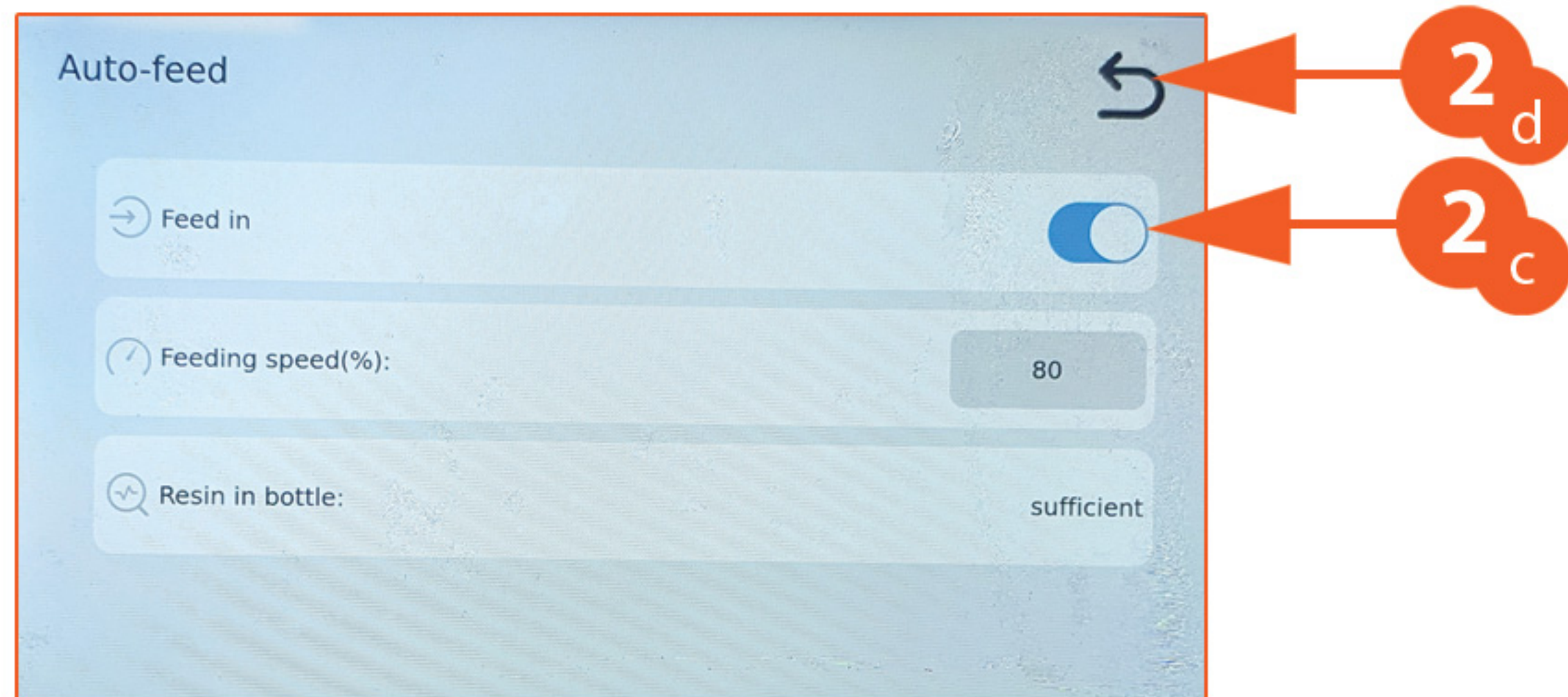
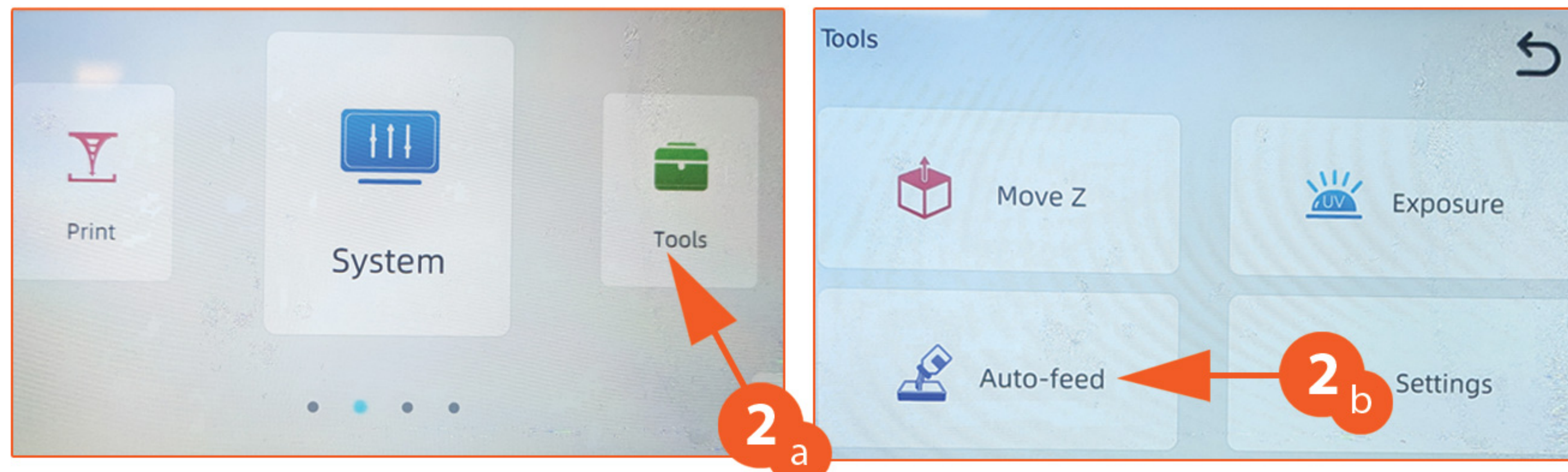
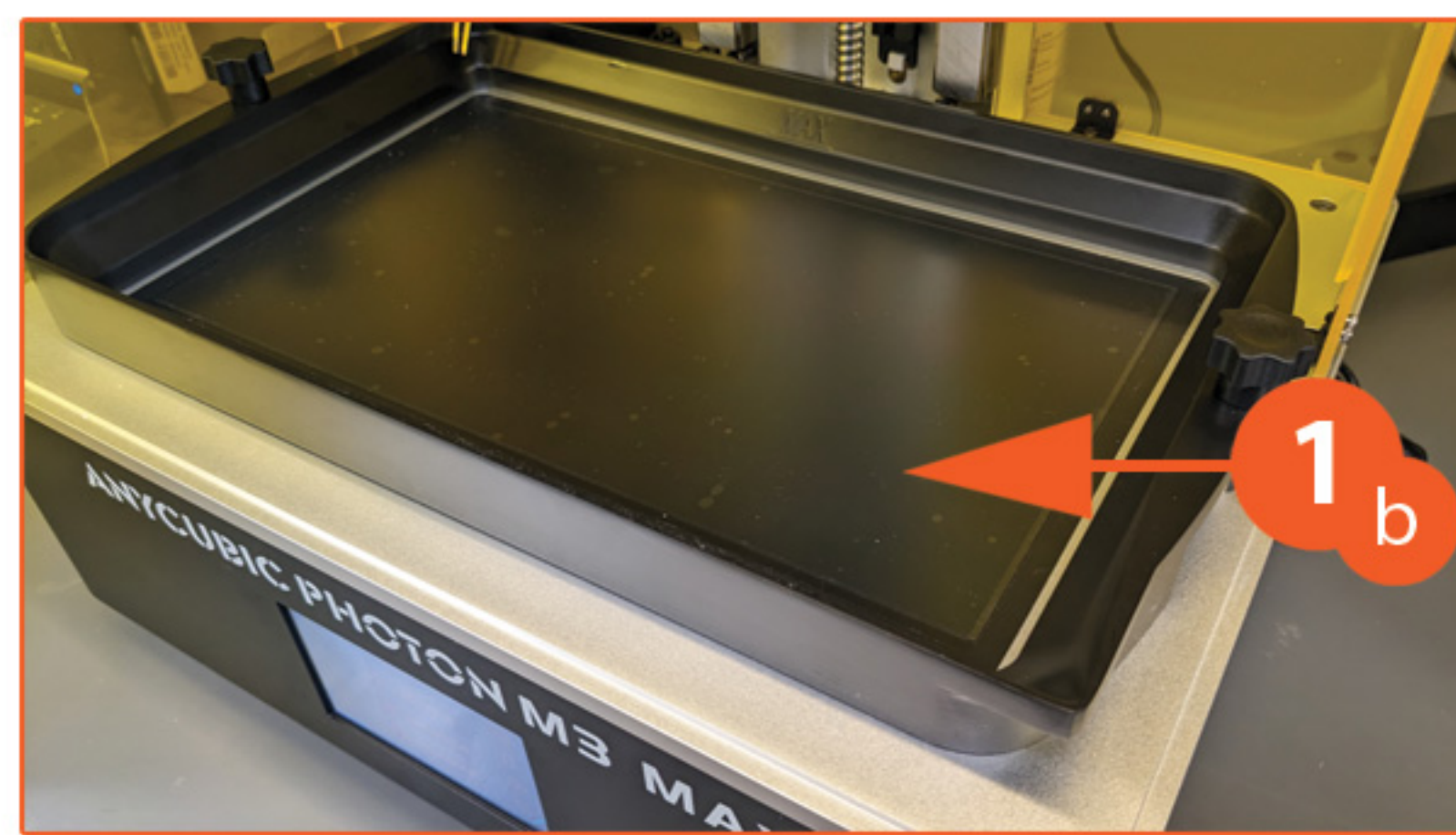
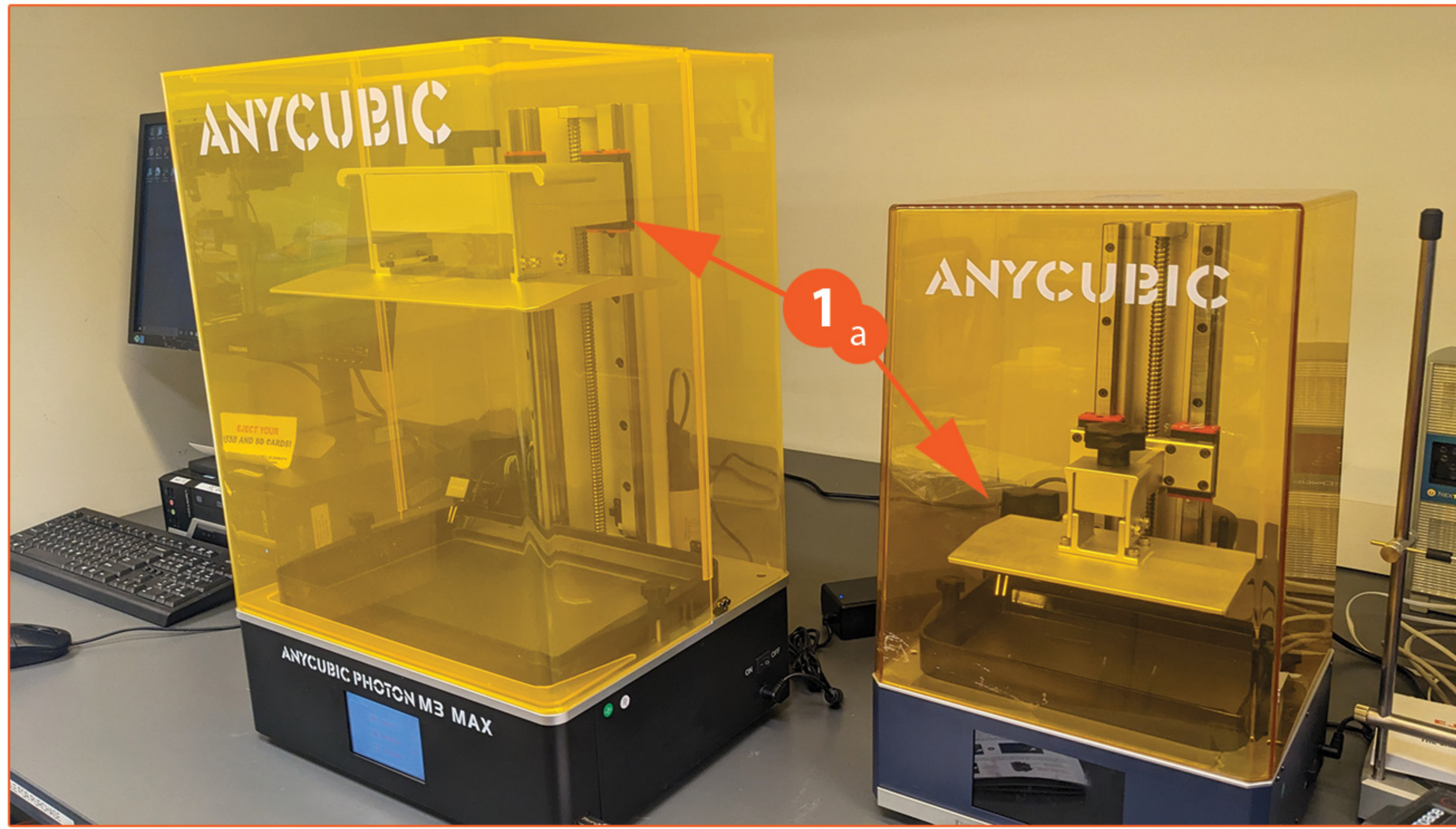


HOW TO 3D PRINT WITH THE ANYCUBIC RESIN PRINTERS





1

1a - Remove the yellow cover of the printer you are using.

- **M3 Max** (large printer), the front half comes off.
- **M3 Plus**, the entire cover lifts straight up & off.

1b - Check the tray:

- Make sure there is no cracks in it
- Make sure there is no old resin & or set resin in it (any resin in it should not be more than a day old.)

1c - Make sure the build plate is clean and has nothing on it.

2

Resin Flow Settings:

For the M3 Plus

2a - Select Tools.

2b - Select Auto-Feed.

2c - Make sure Feed In is on (blue & to the right).

2d - Return to the Main Menu

3

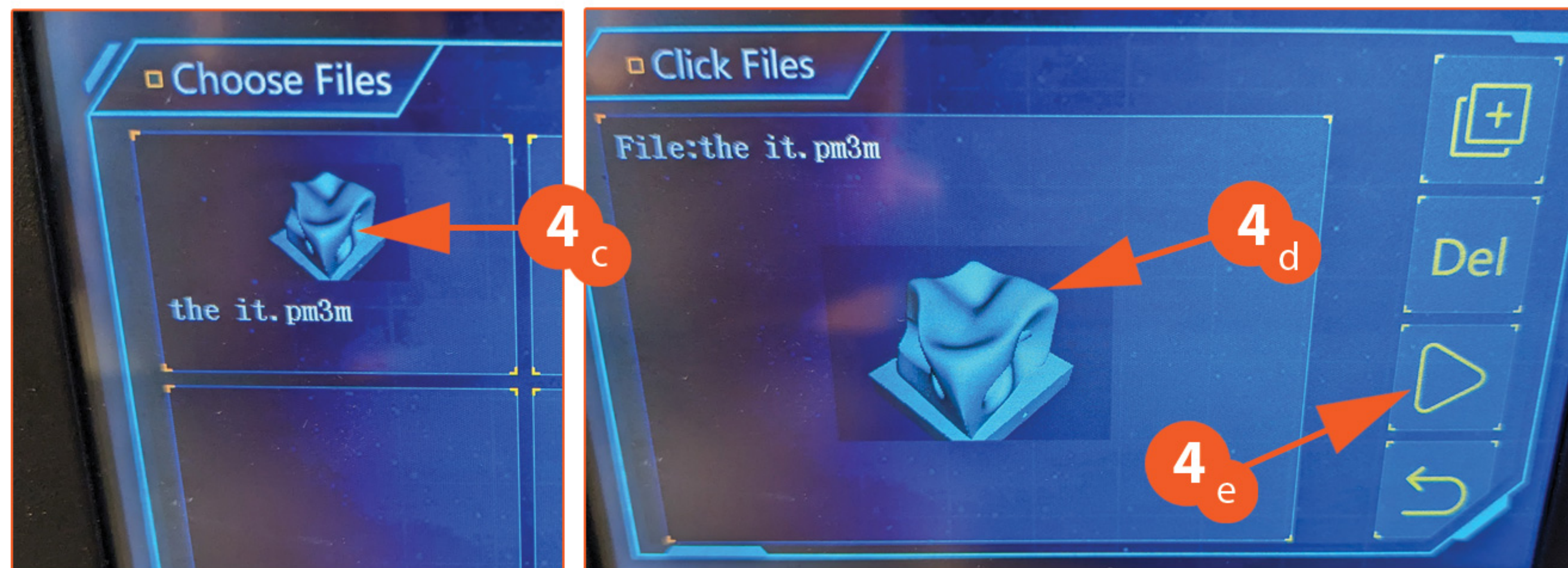
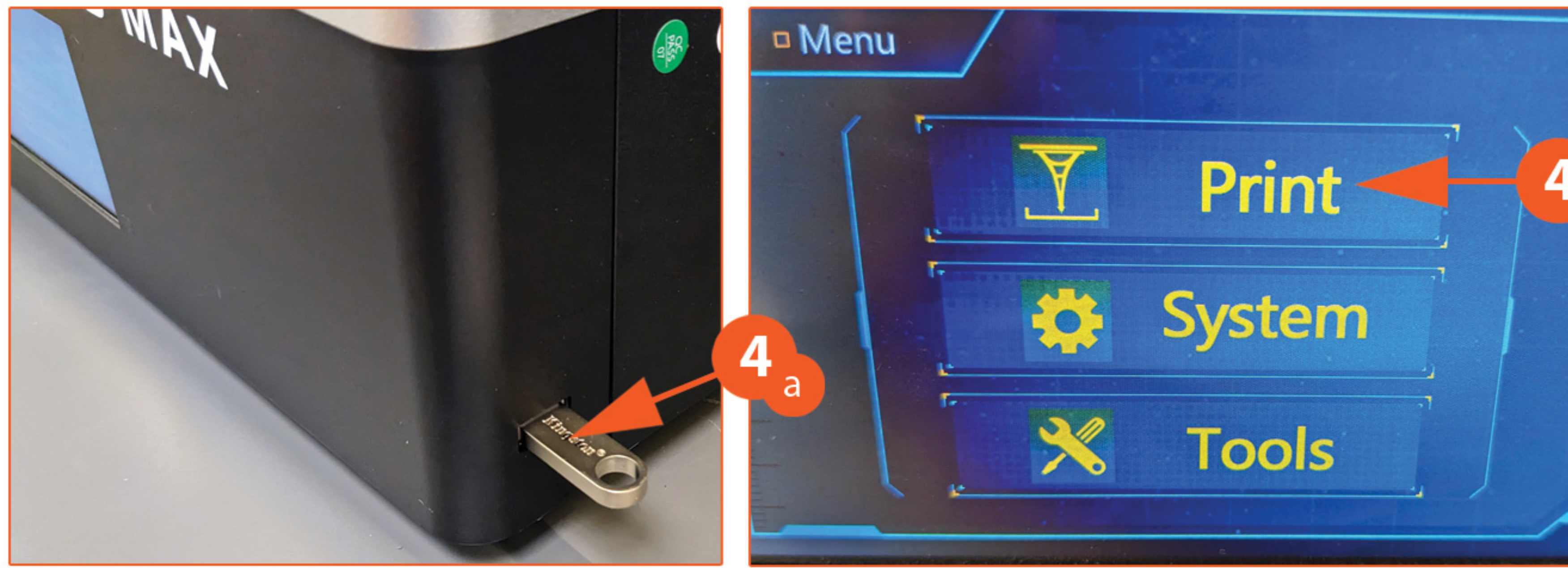
For the M3 Max

3a - Select Tools.

3b - Select/press the Feed icon.

3c - Once pressed it should look like this.

3d - Return to the Main Menu



4

For the M3 Max

4a - Plug in your USB stick with your file from Photon Studio on it:
The M3 Max the file extension is .pm3m

The M3 Max the file extension is .pm3m

4b - On the front touch screen, press Print.

4c - Press/Select your file.

4d - Your file will be full screen now.

4e - Press/Select the Play Icon.

4f - This screen will appear. The resin will soon start feeding into the tray.

4g - Use the Stop icon if something is wrong with the print or the resin is not pouring into the tray.

5

For the M3 Plus

5a - Plug in your USB stick with your file from Photon Studio on it:
The M3 Plus the file extension is .pwmb

The M3 Plus the file extension is .pwmb

5b - On the front touch screen, press Print.

5c - Make sure this Icon is selected, and it should say USB Drive Files

5d - Your file will appear, Press/Select your file.

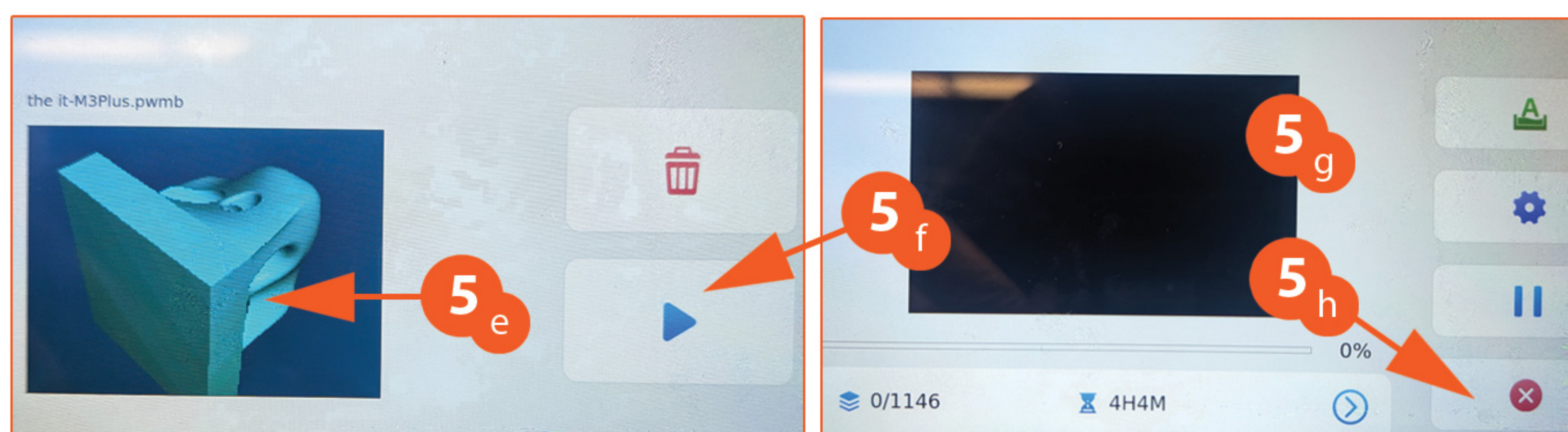
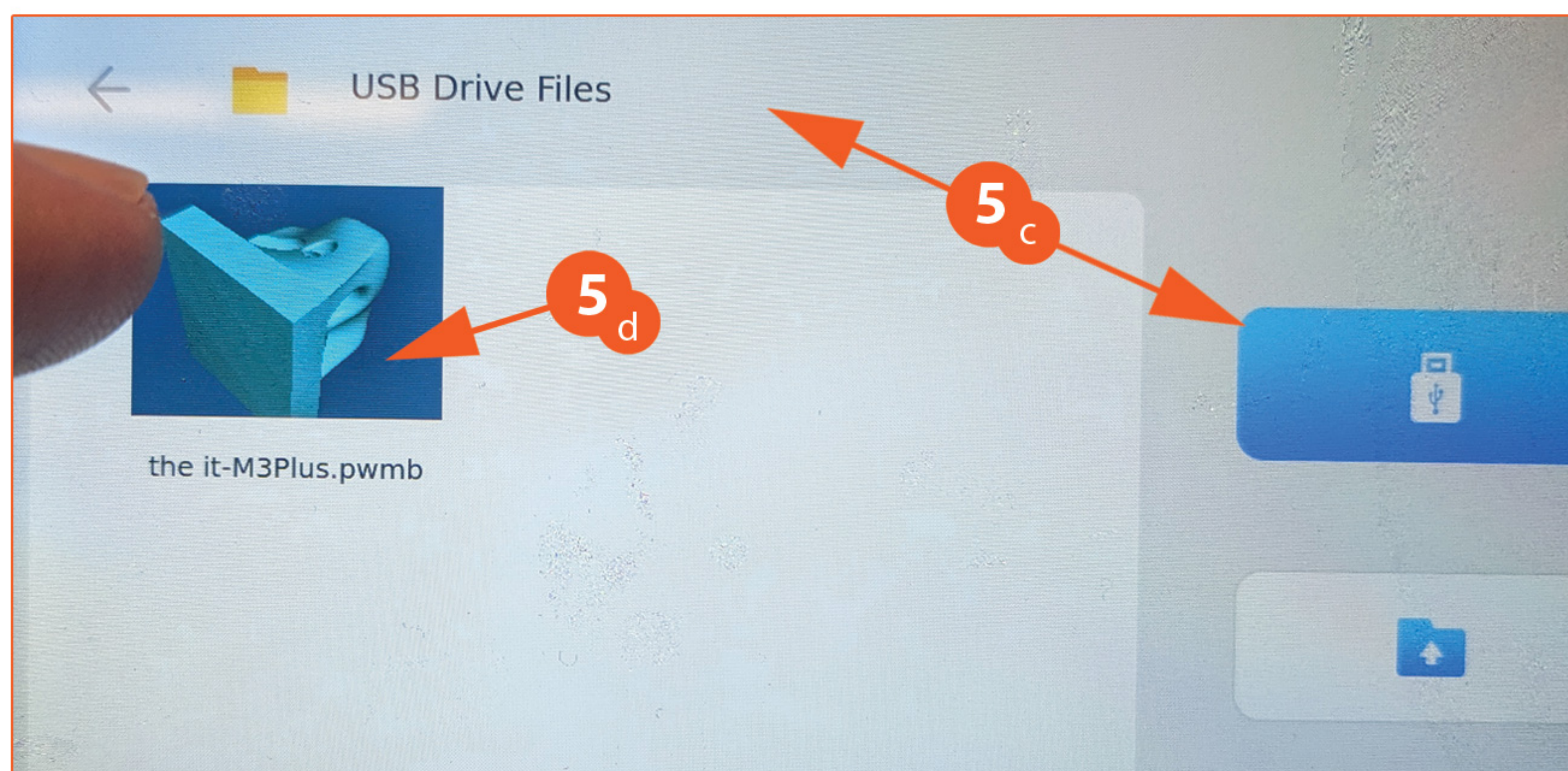
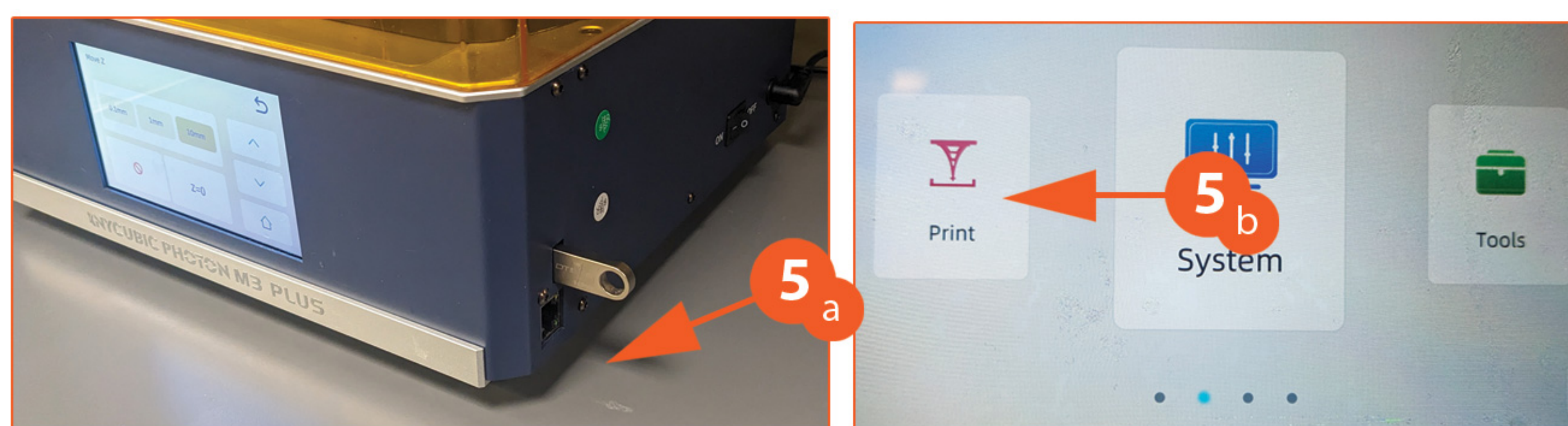
* If your file does not appear, you most likely had the wrong printer selected when you sliced your object in Proton Studio.

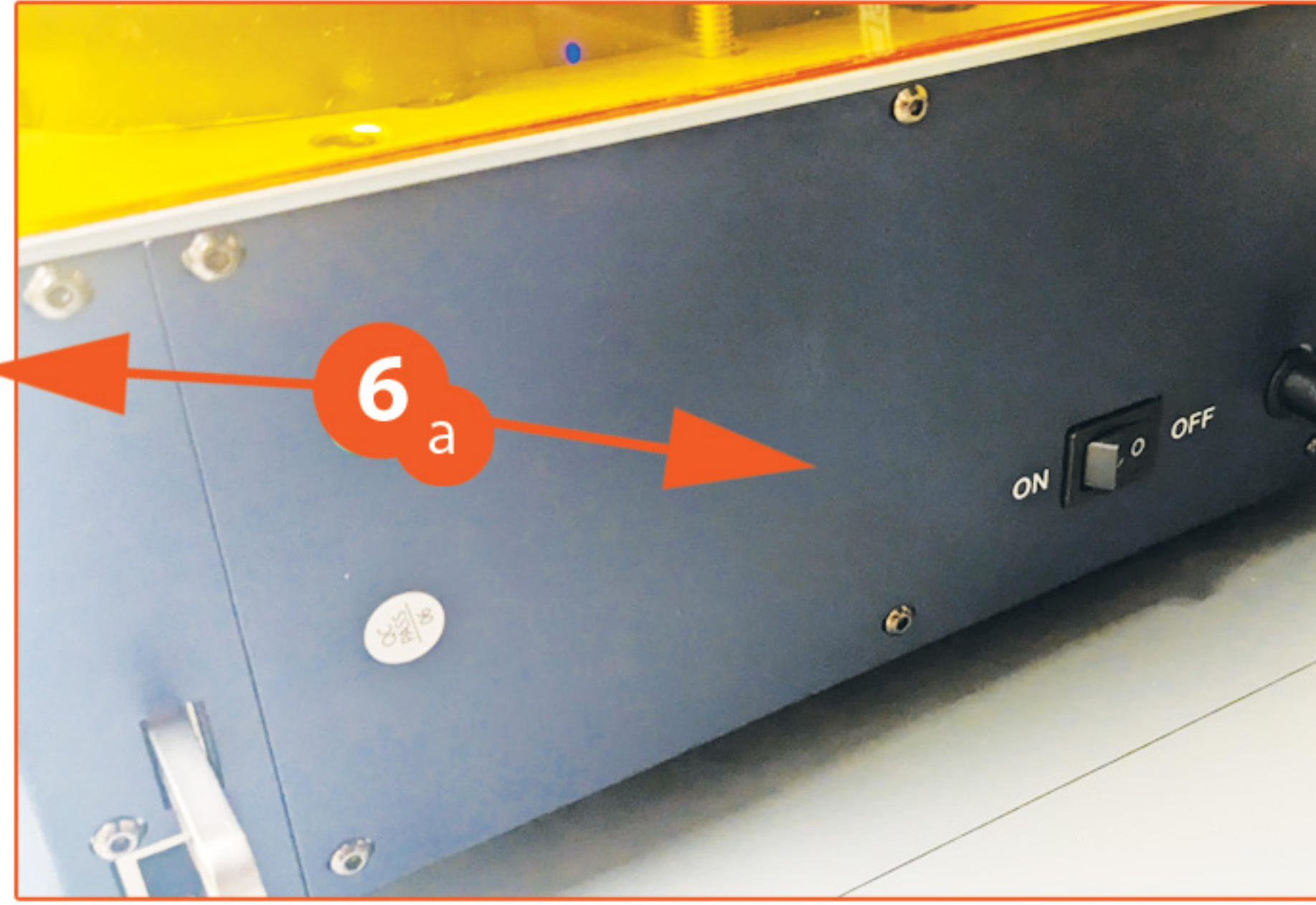
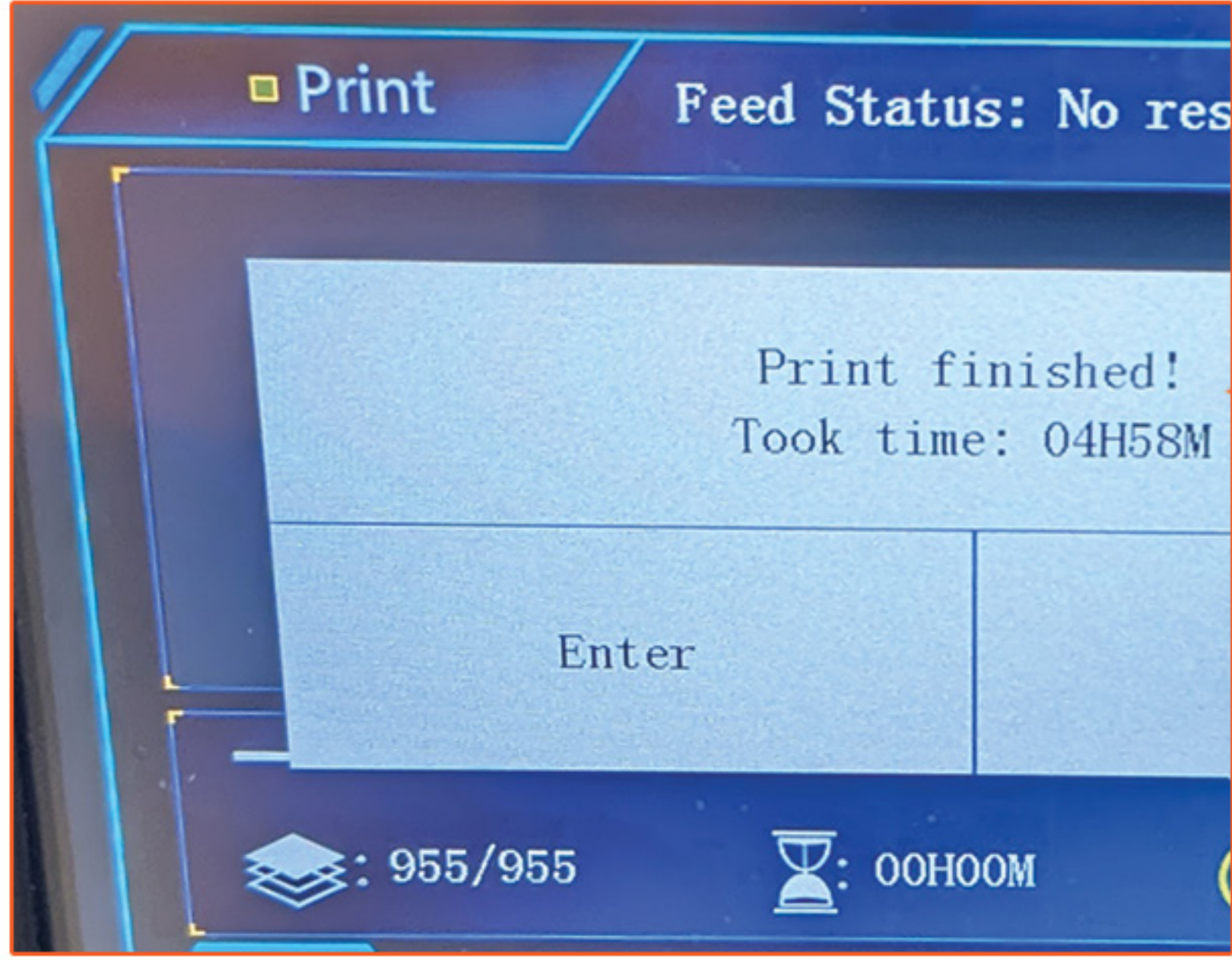
5e - Your file will be full screen now.

5f - Press/Select the Play Icon.

5g - This screen will appear and the resin will soon start coming into the printer tray.

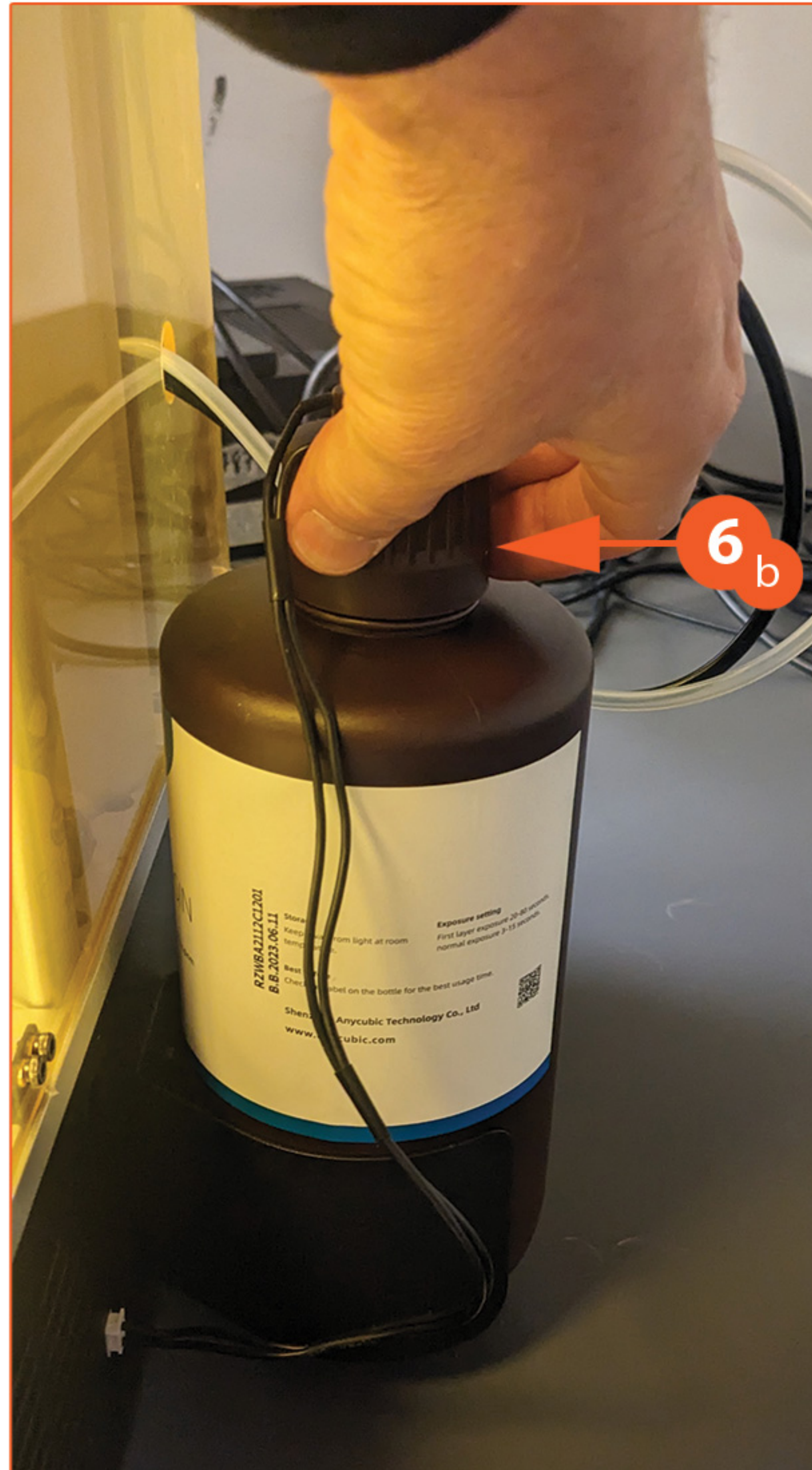
5h - Use the Stop icon if something is wrong with the print or the resin is not pouring into the tray.





6

6a - Once the print is complete, you can turn off the printer.



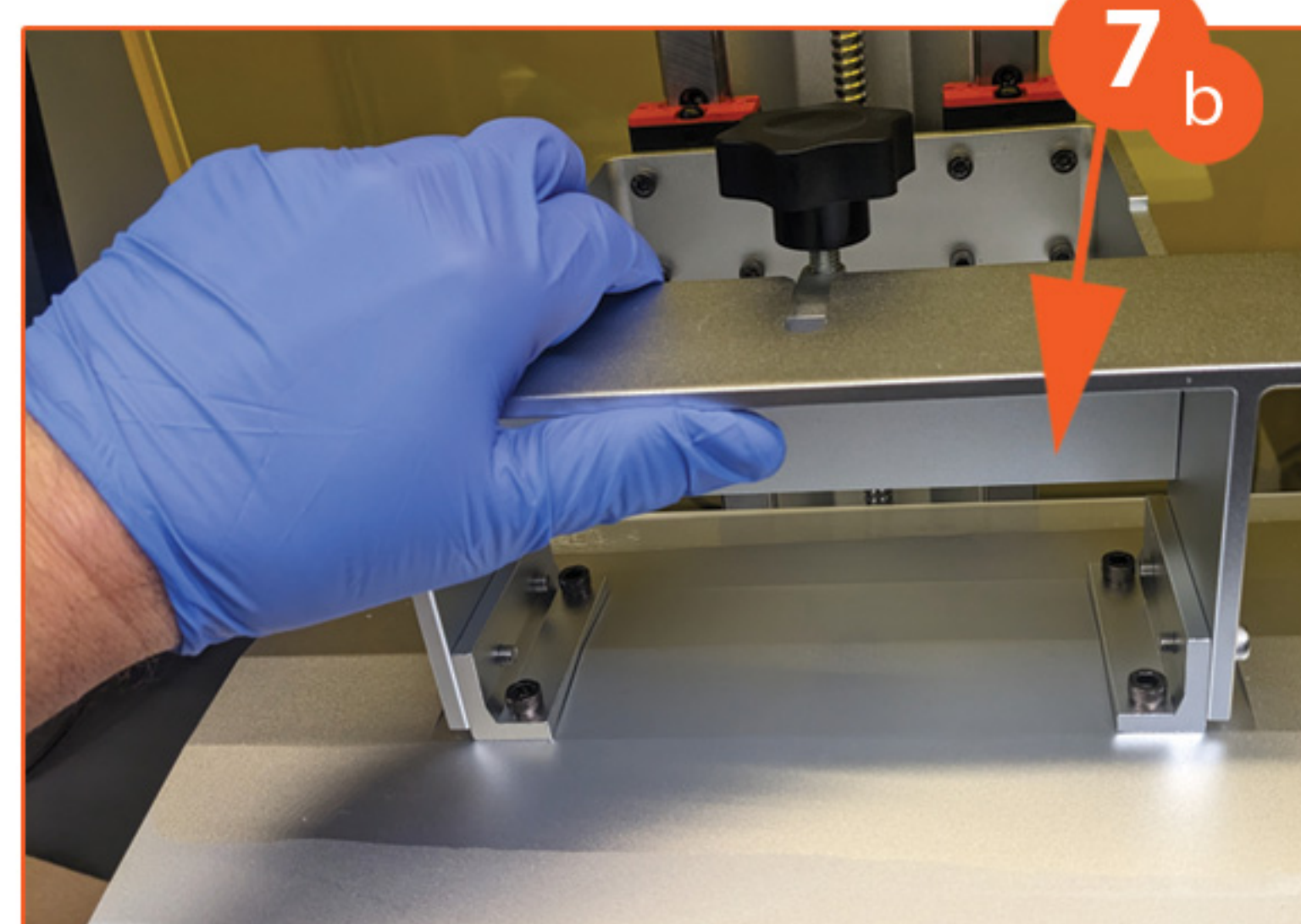
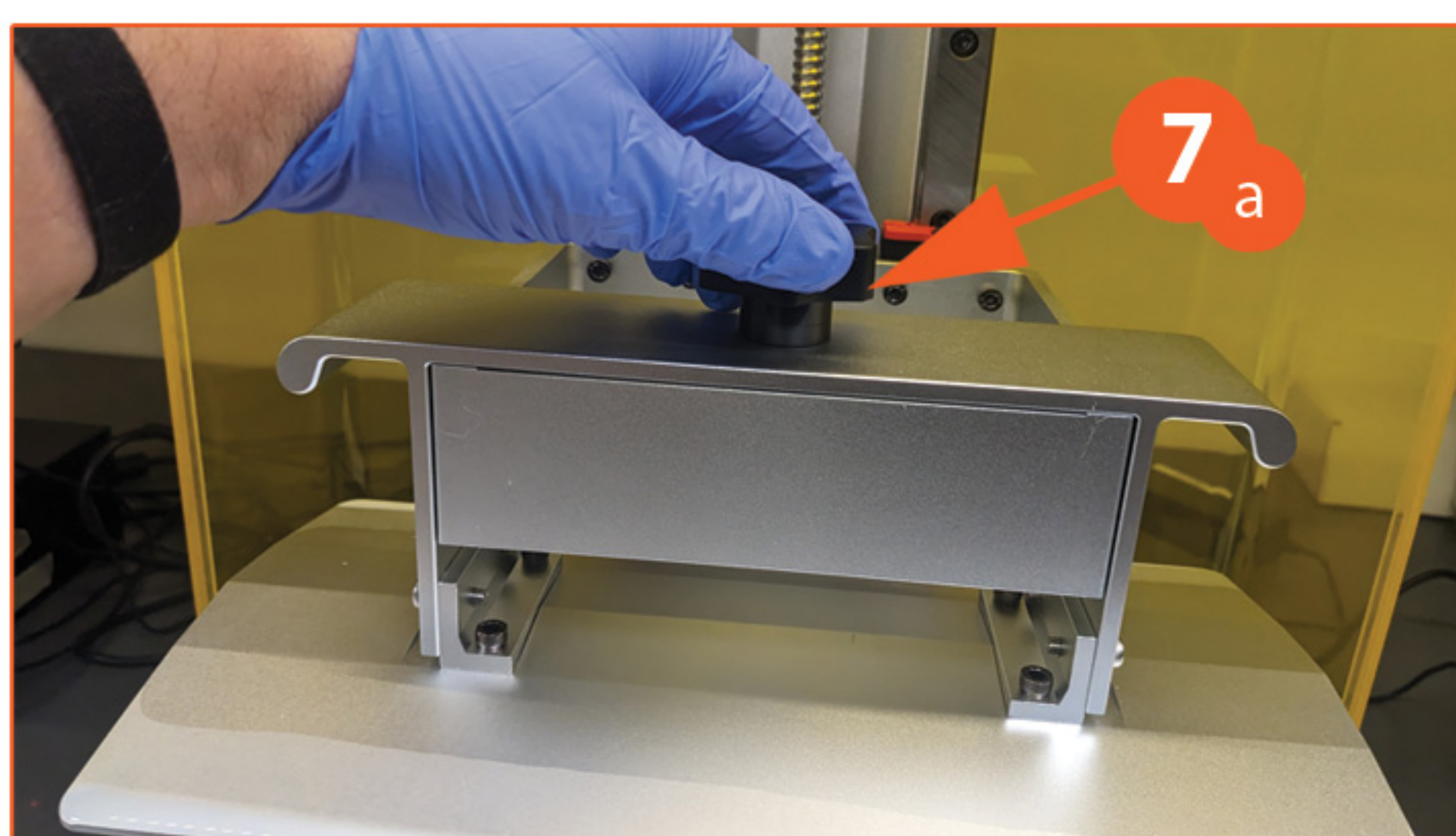
Rotate the printer around to access the Resin bottle.

6b - Holding the top/cap/tubes stationary, rotate the bottle counter clock wise to unscrew the top.

Lay the top and tubes down on a paper towel.

6c - Bring the bottle to the sink area. Put the funnel and a paint filter into it.

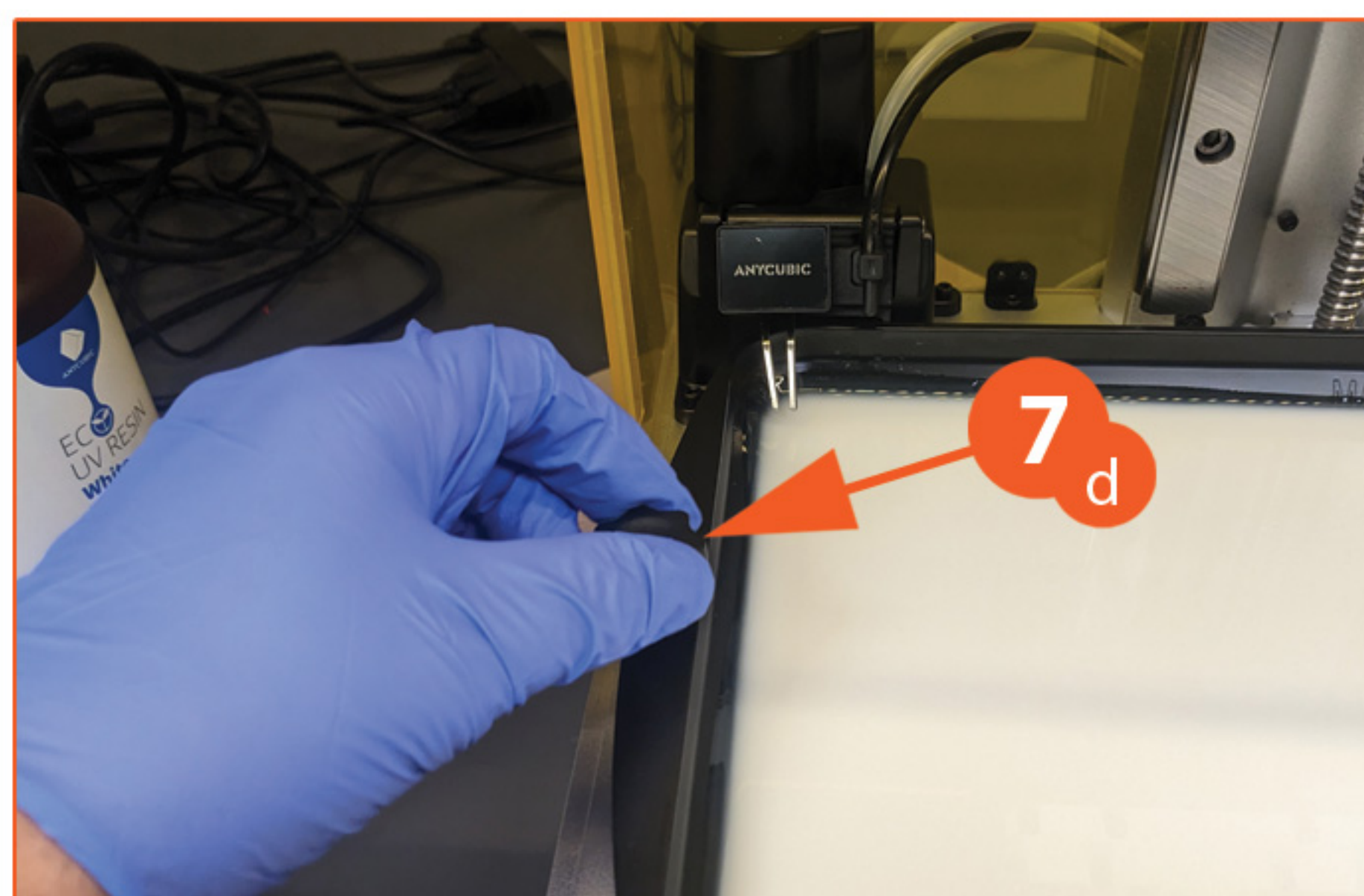
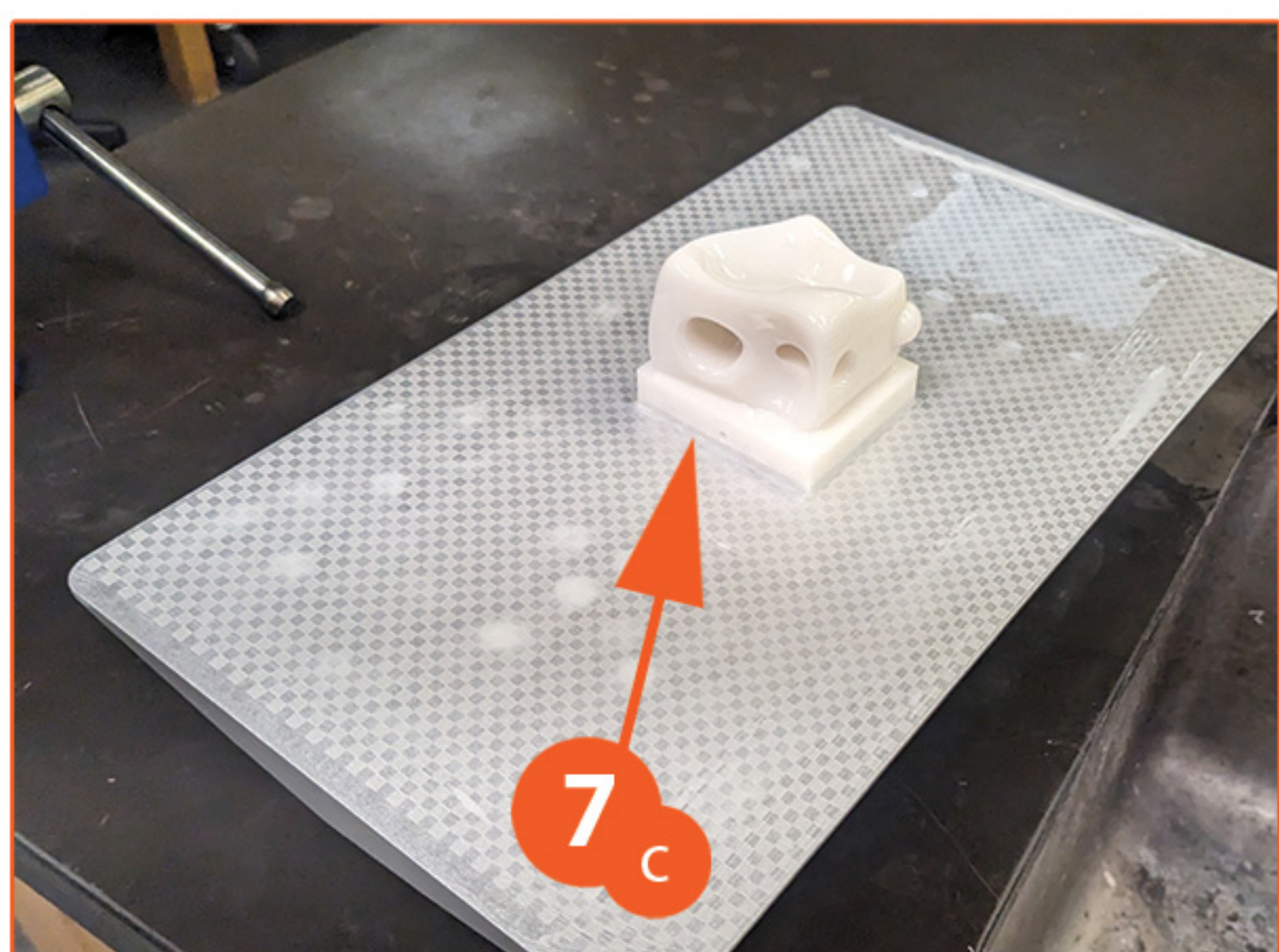
7



7a - Undo the print platforms knob.

7b - Slide the platform forward to release it.

7c - Flip it upside down and take it to the sink area. Have paper towels handy to catch any drips.



Using a metal scraper, carefully pry underneath your print to release it.

7d - Undo the 2 bolts holding the print tray down.

Carefully lift it up, take it to the resin bottle and funnel. There is a pour end on the tray at the right front of it. Pour it slowly into the funnel/filter, until it is empty.

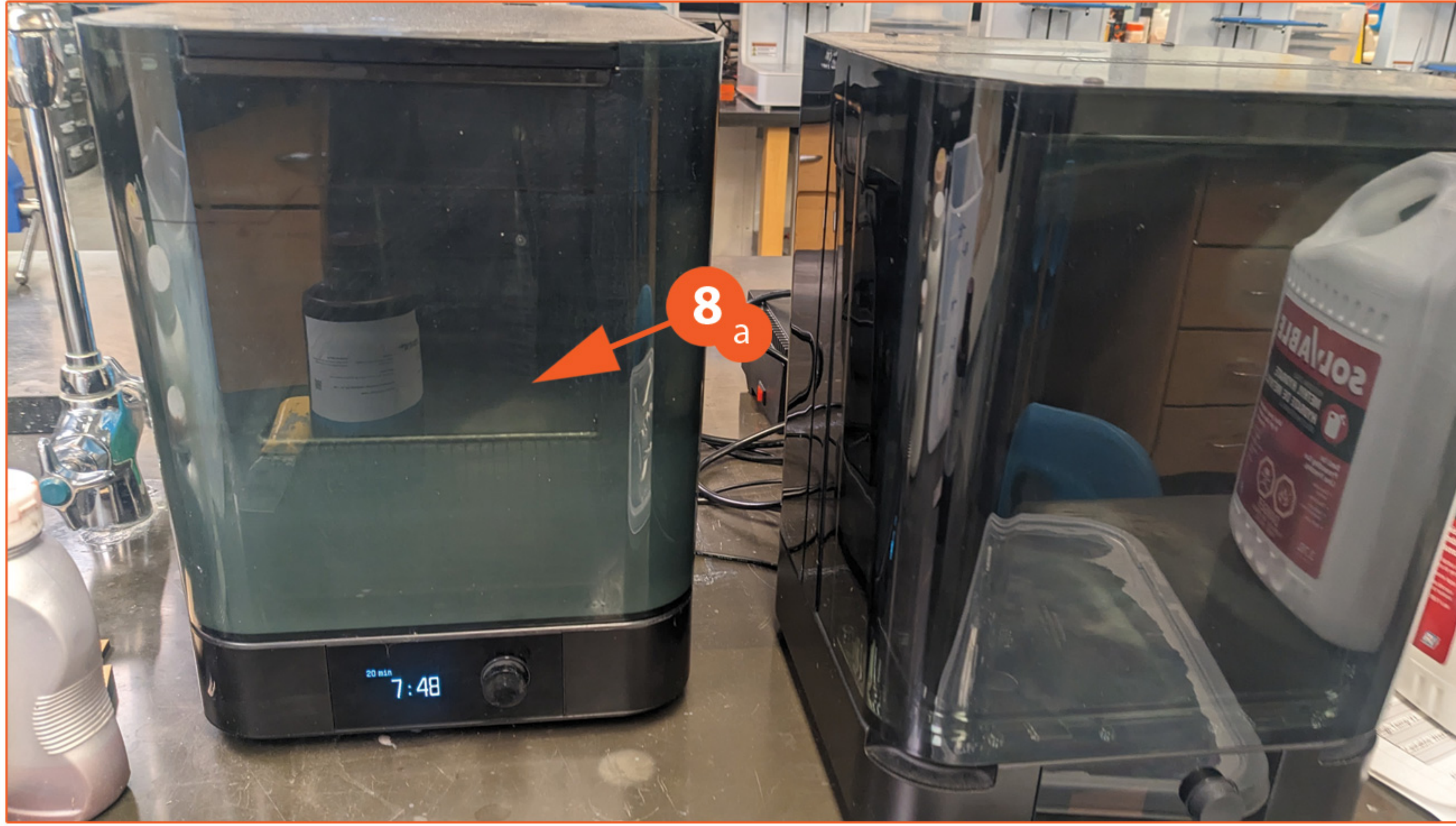


7e - Use the plastic scraper to scape it into the front right corner, and pour into the resin bottle again.

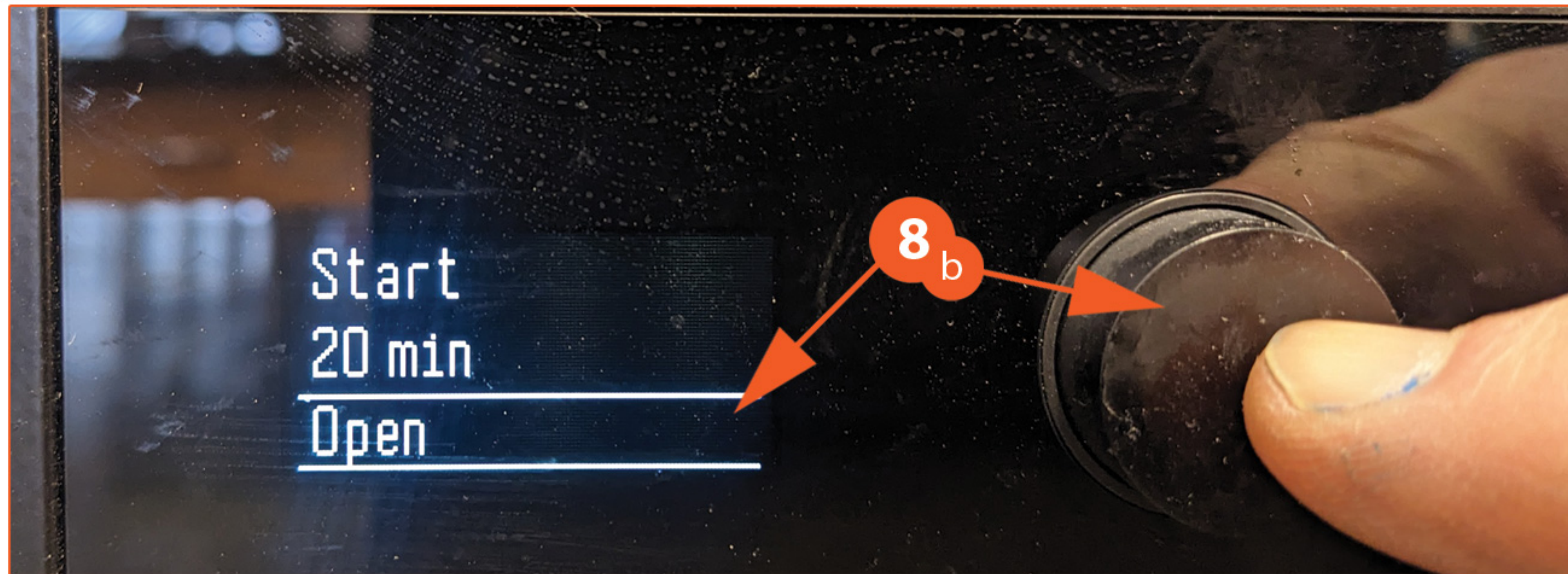
7f - Use paper towels and Methyl Hydrate to clean the platform off and the tray (use gloves for this operation).

8

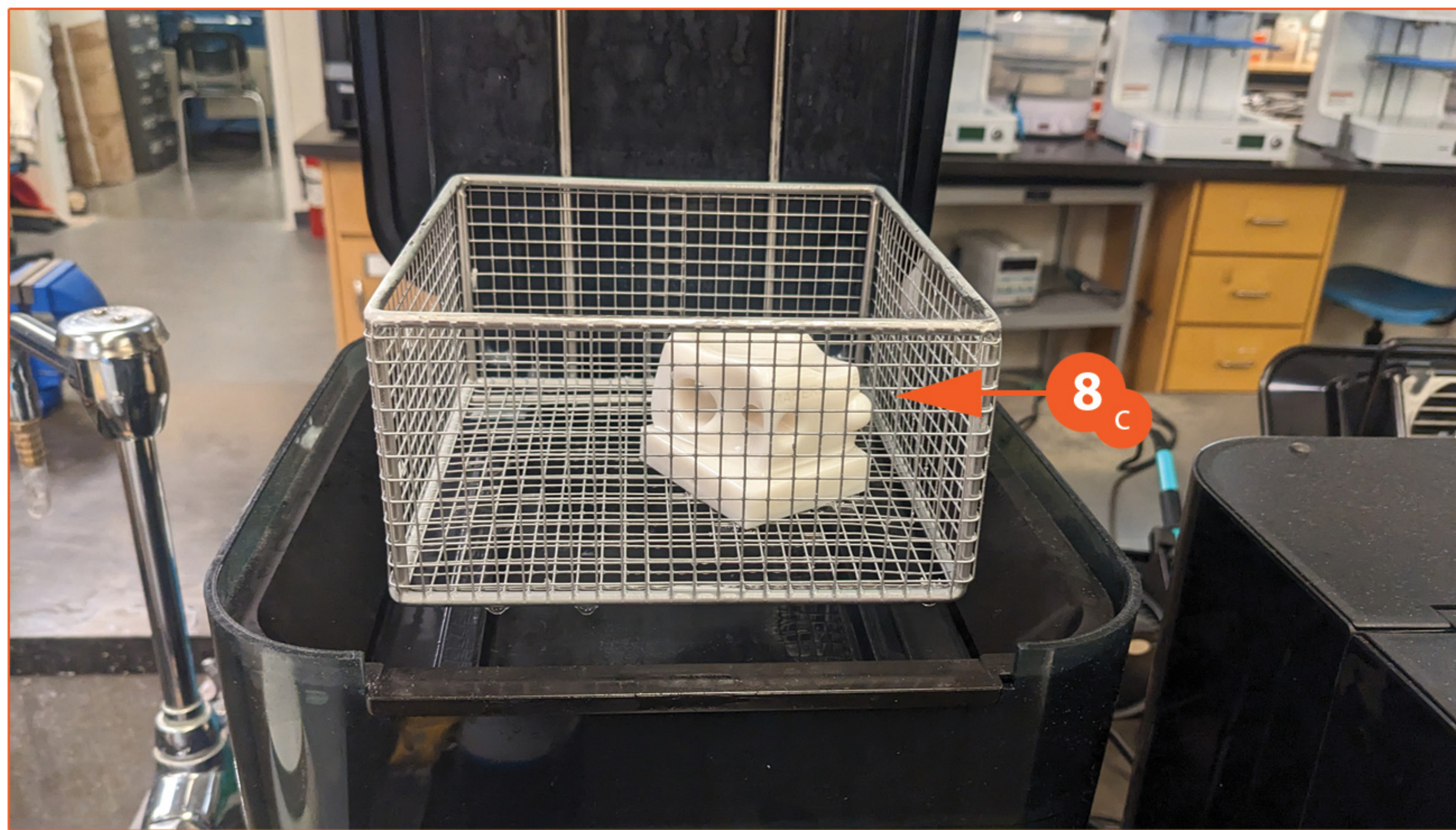
8a - Bring your print over to the FormWash station.



8b - Push the button to open the top up.



8c - Place your print in the basket.
At this point make sure the station is full of Methyl Hydrate or IPO Alcohol.



8d - Rotate the dial until it highlights Start. Then push it in to begin the cleaning.
The setting should be at 20 minutes.



8e - When complete, take your print out & Rotate the dial to Sleep, press the dial in to put the FormWash to sleep.

8f - Rinse the print well with water.



9

9a - Go to the FormCure station.

9b - Lift the front upwards until it rests on the top.

9c - Place your object on the platform.

9d- Rotate the dial to the Start, and press it to begin.
The settings should be 15 minutes & 60 degrees.

9e- Once complete, lift up the lid and remove your object. It is now fully cured.
Close the lid, the FormCure will go to sleep by itself.

