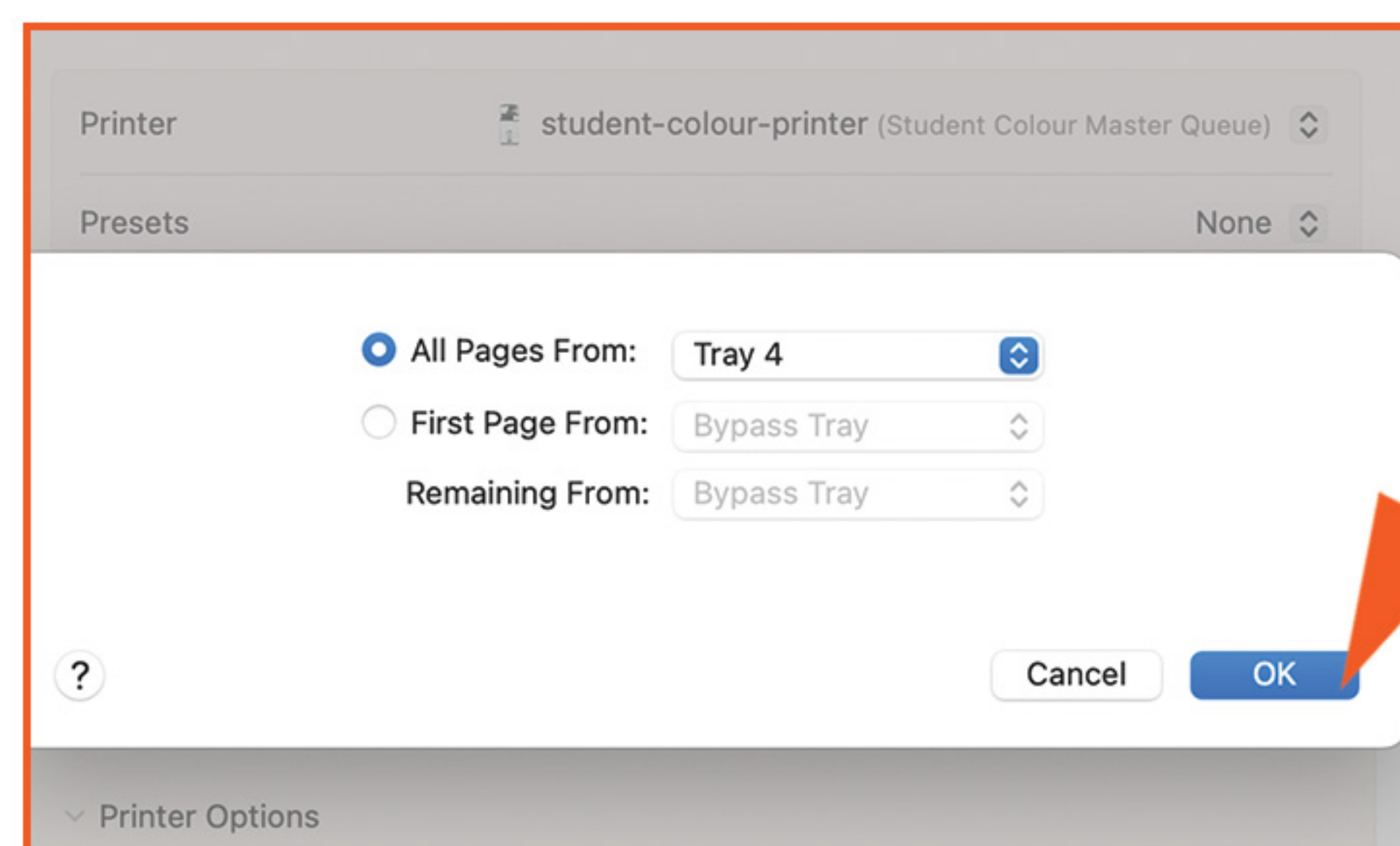
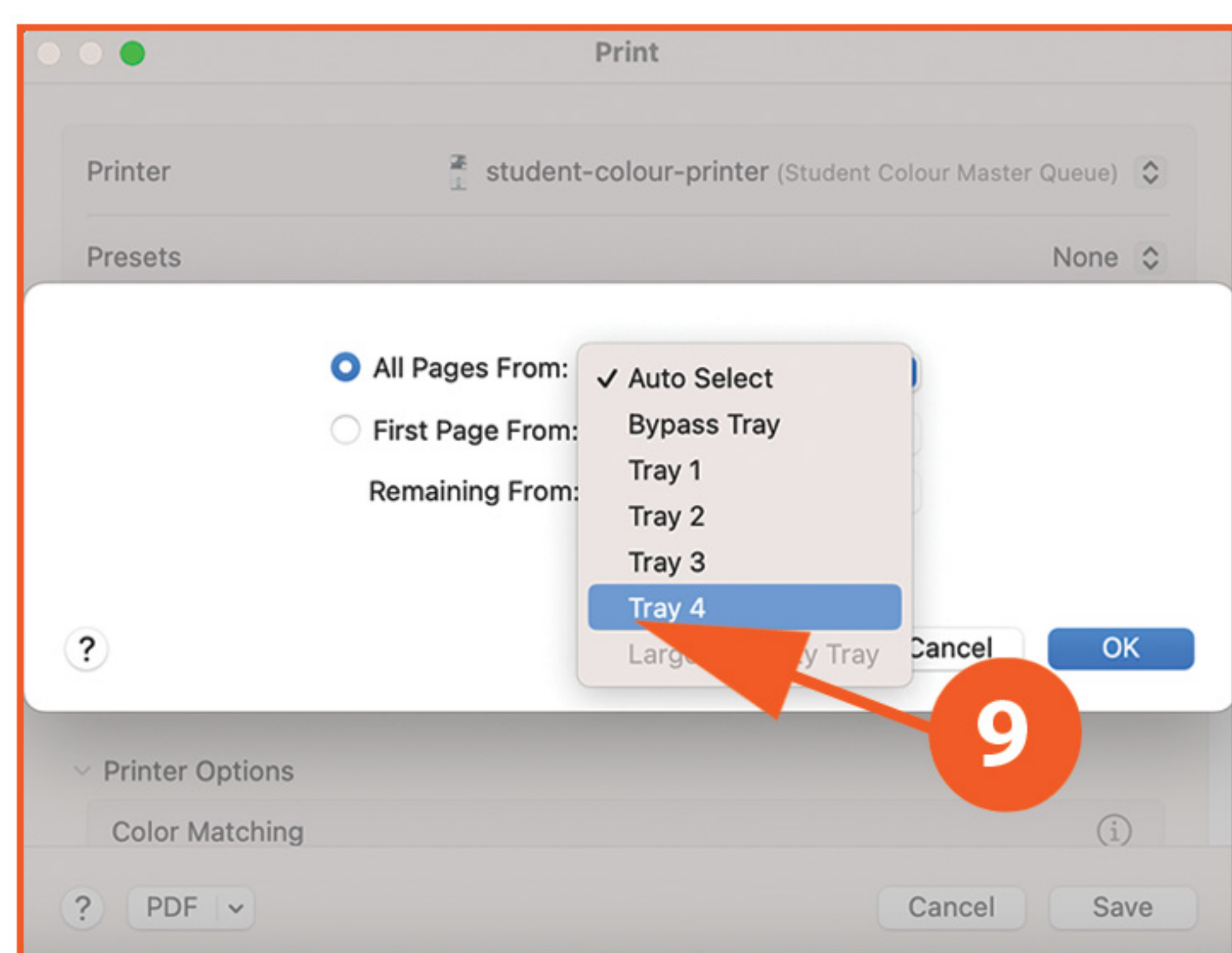
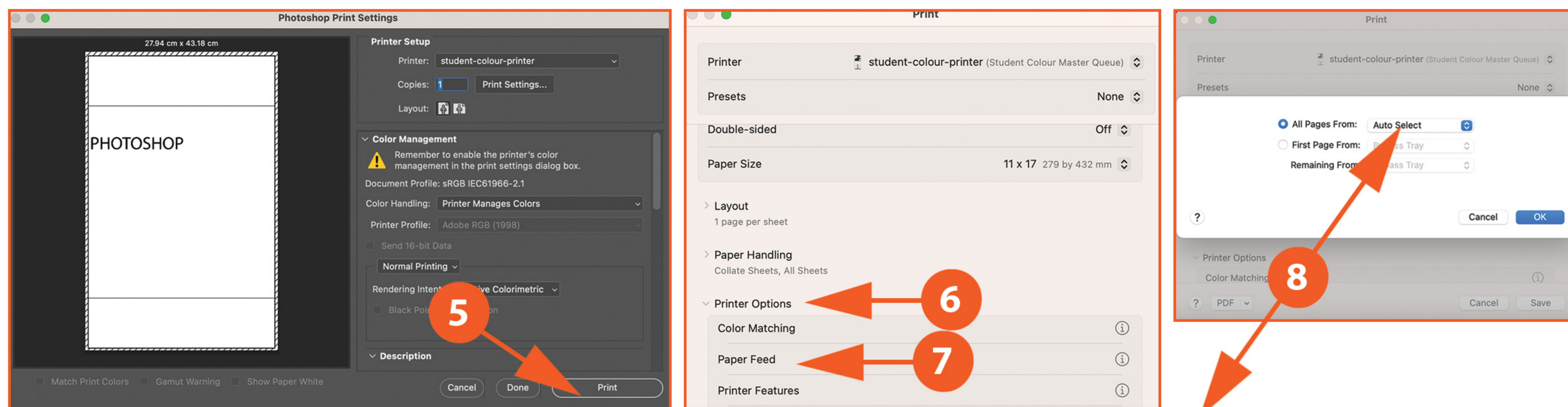
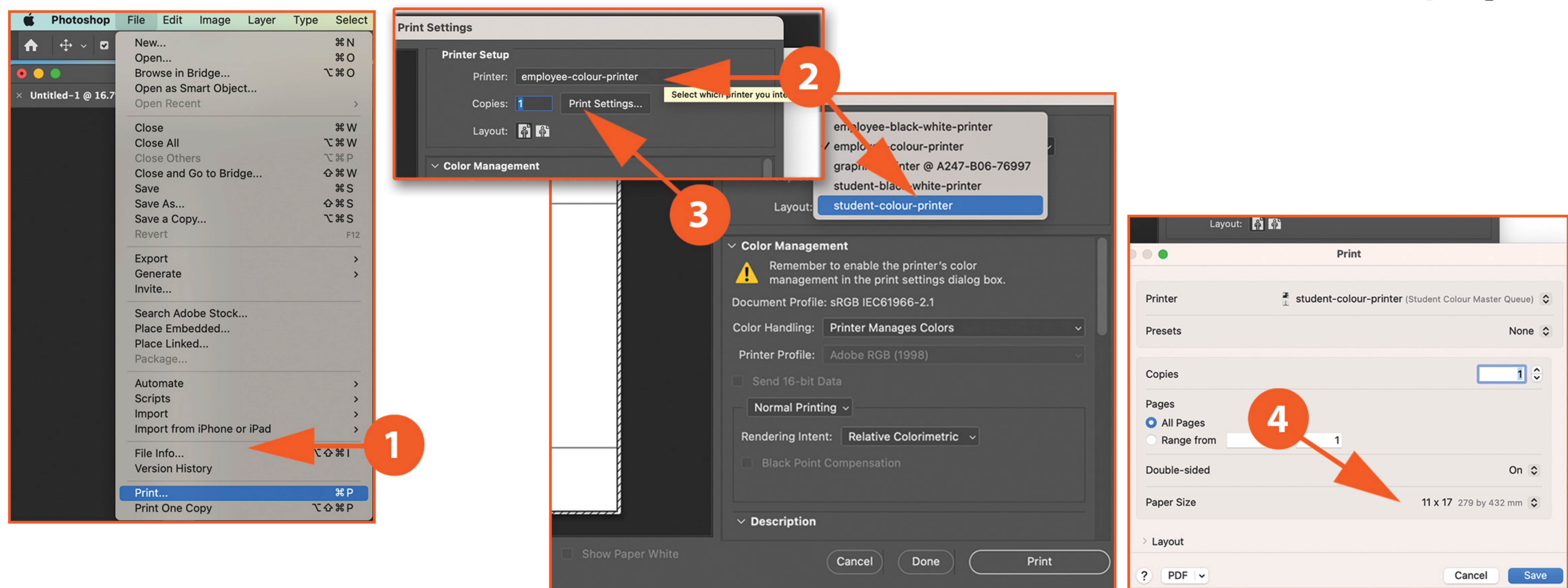


# MAC - PHOTOSHOP TO GRAPHICS PRINTER

page 1



## PAPER SIZE & THICKNESS OPTIONS

For 8.5 x 11 medium thickness high quality paper stock:  
Tray 1 & Paper = Letter

For 8.5 x 11 thick card stock:  
Tray 2 & Paper = Letter

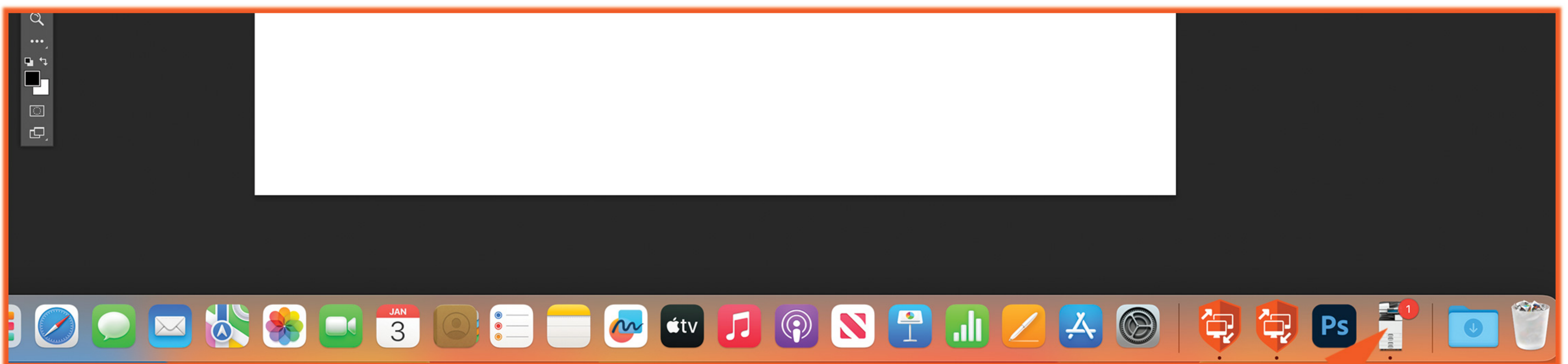
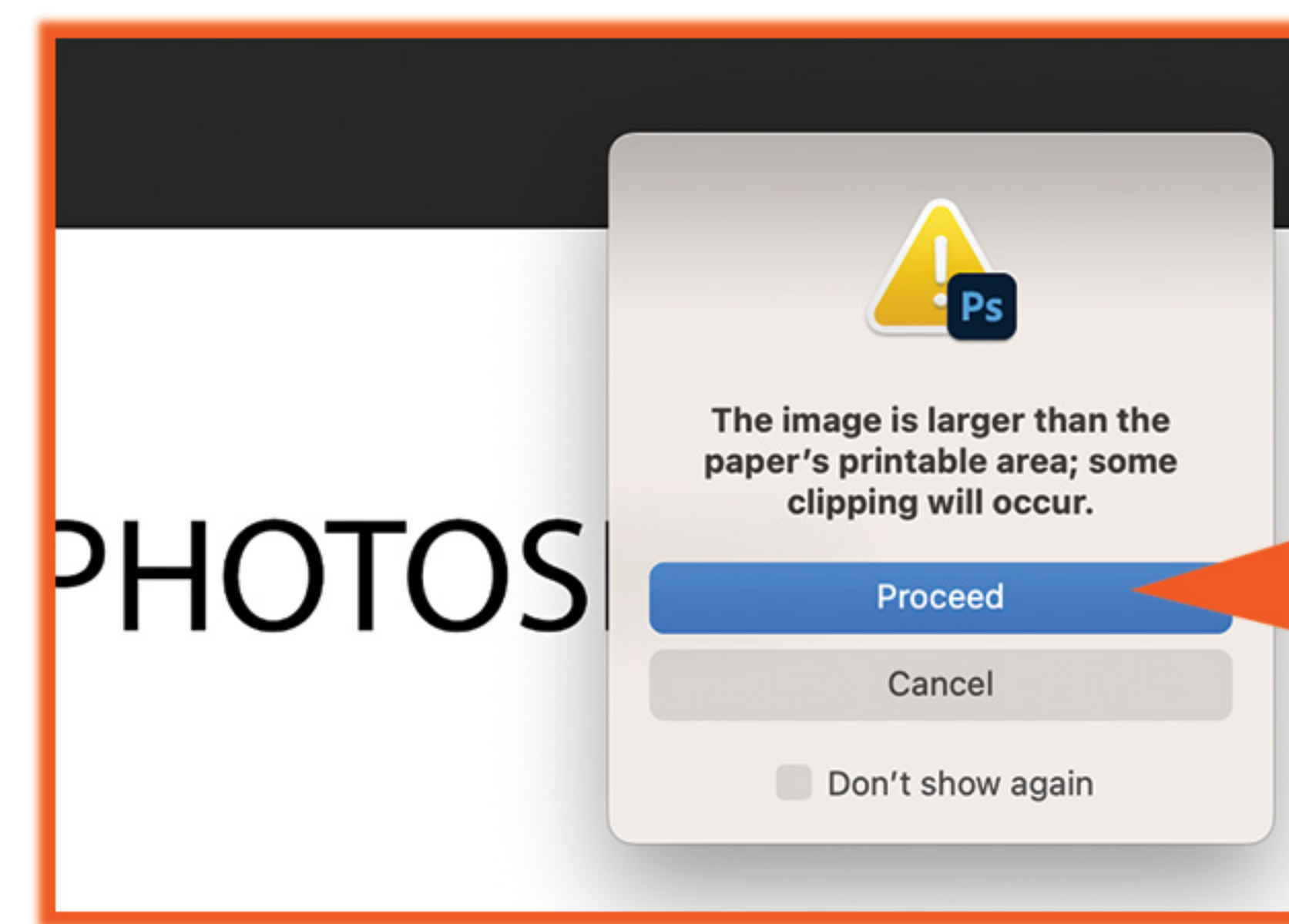
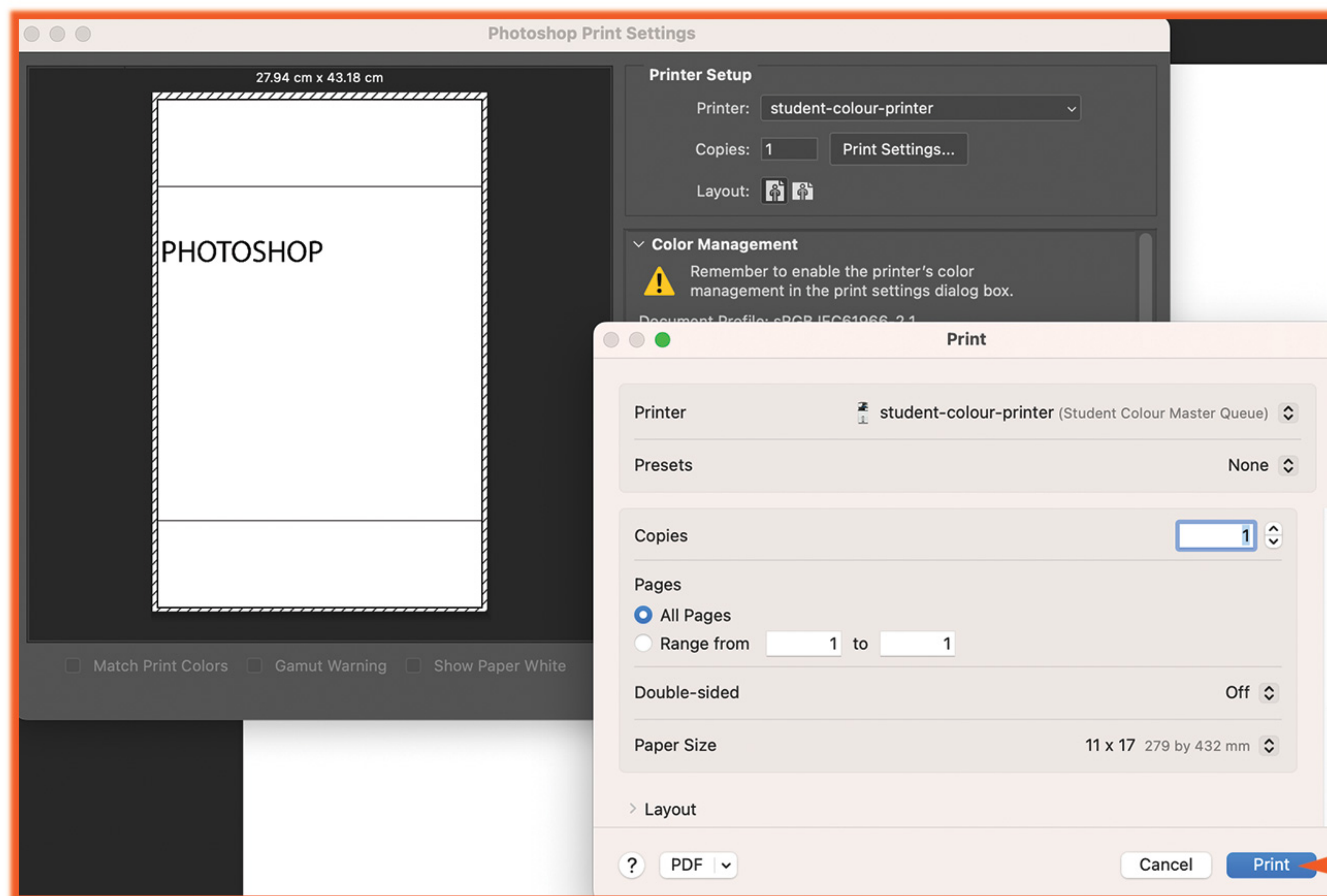
For 11 x 17 medium thickness high quality paper stock:  
Tray 3 & Paper = Tabloid or 11x17

For 11 x 17 thick card stock:  
Tray 4 & Paper = Tabloid or 11x17

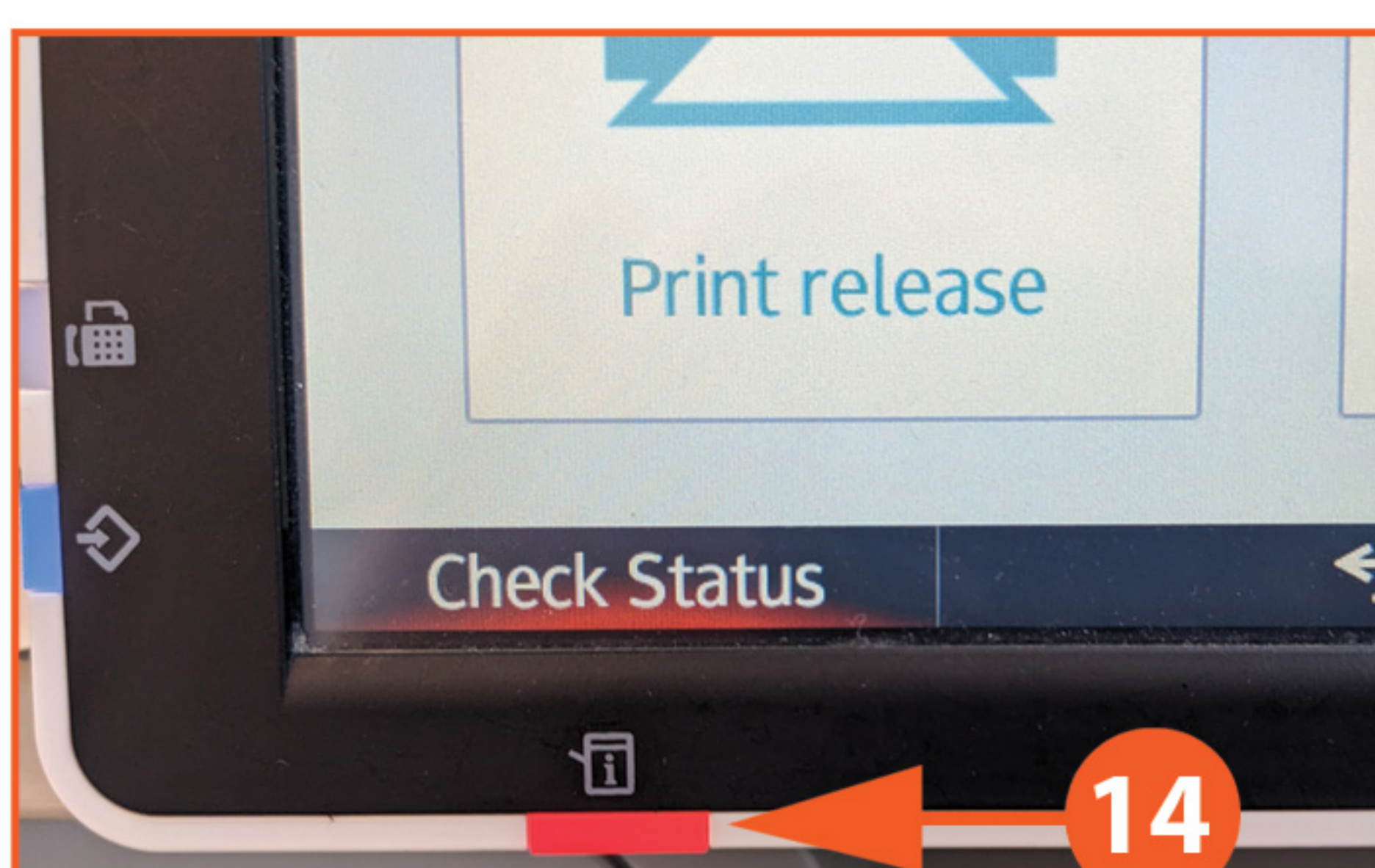


## MAC - PHOTOSHOP TO GRAPHICS PRINTER

page 2



Your print will not be sent until the printer icon disappears.  
This can be right away or up to 5 minutes.



Sign in to the Graphics printer with your ID. If you are a student you will need funds in your account to get the print. You can add funds to your account at the Library or the Book Store.

It will take a few minutes to print after signing into the Graphics Printer, and selecting and Printing your print.

Ignore the red error light.