

HOW TO MAKE A STAMP WITH THE EPILOG LASER MINI

Version V1

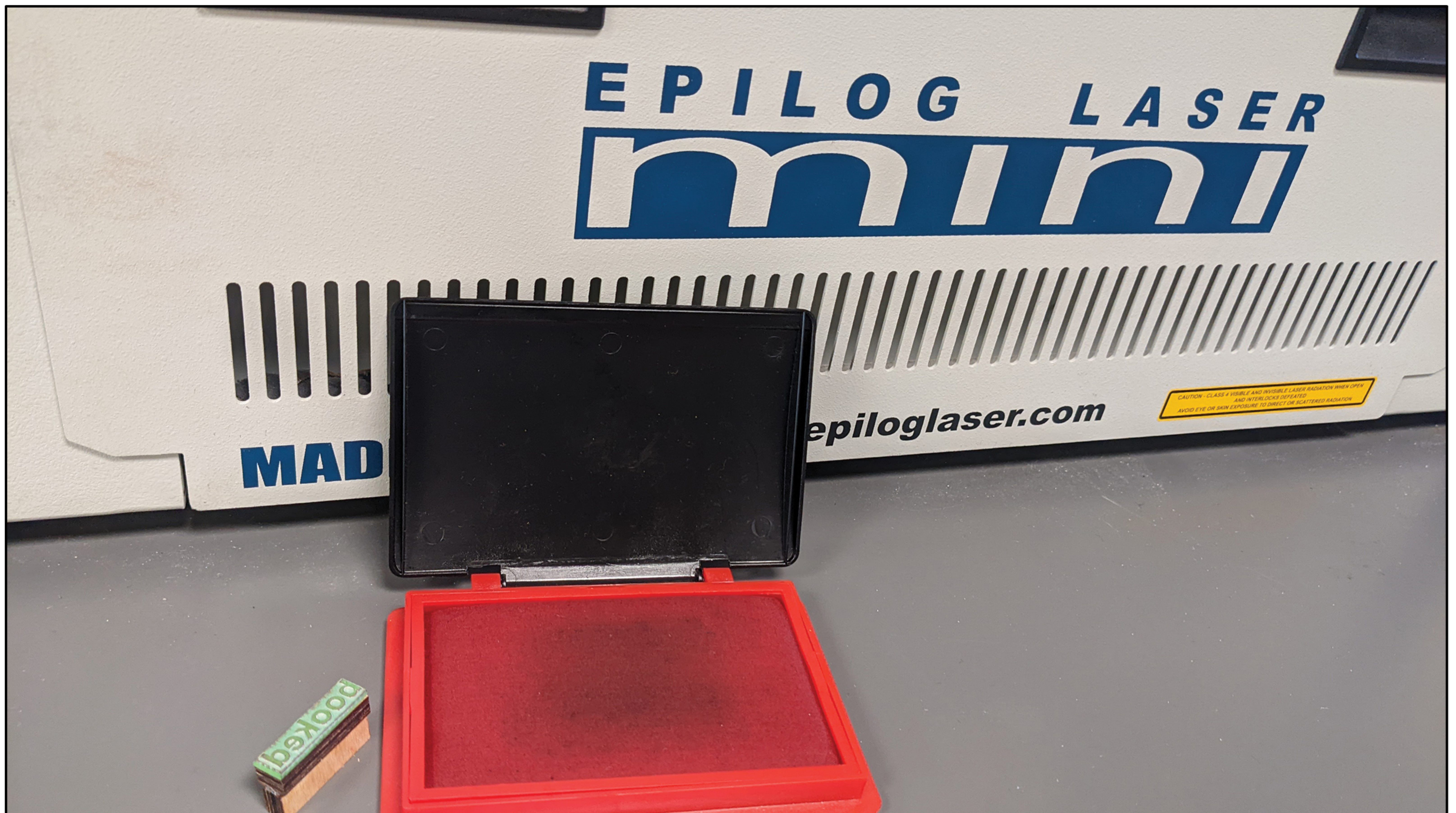


TABLE OF CONTENTS

Page A: Title

Page B: Table of Contents

Page 01: Epilog Startup & Exhaust

Page 02: Compressor & Prepare File In Illustrator

Page 03: Stamp Setup In Illustrator

Page 04: Job Manager

Page 05: Operating The Epligoe Mini

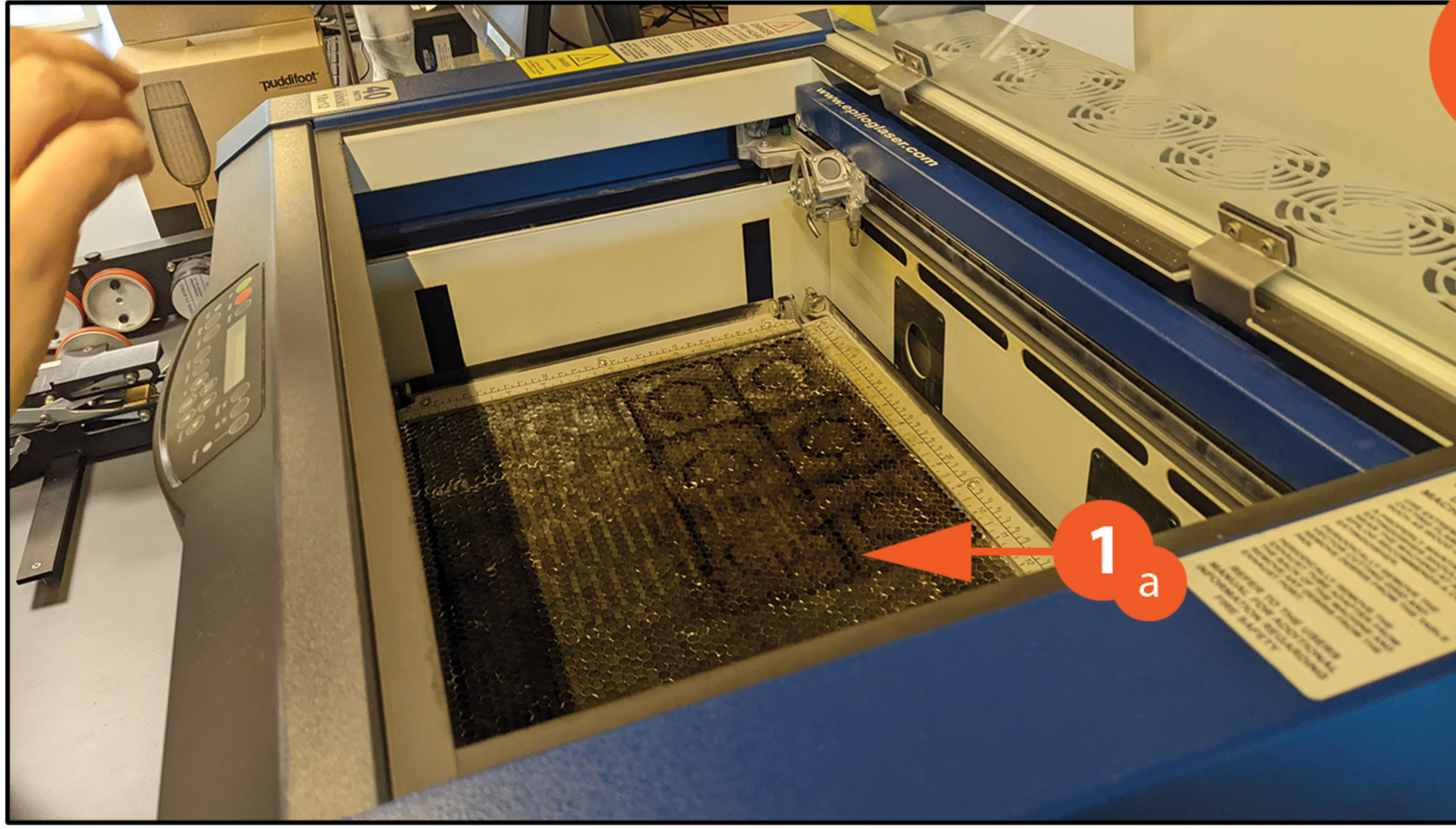
Version v1

Published June 14, 2022

Author Don Gillard

Langara College Makerspace

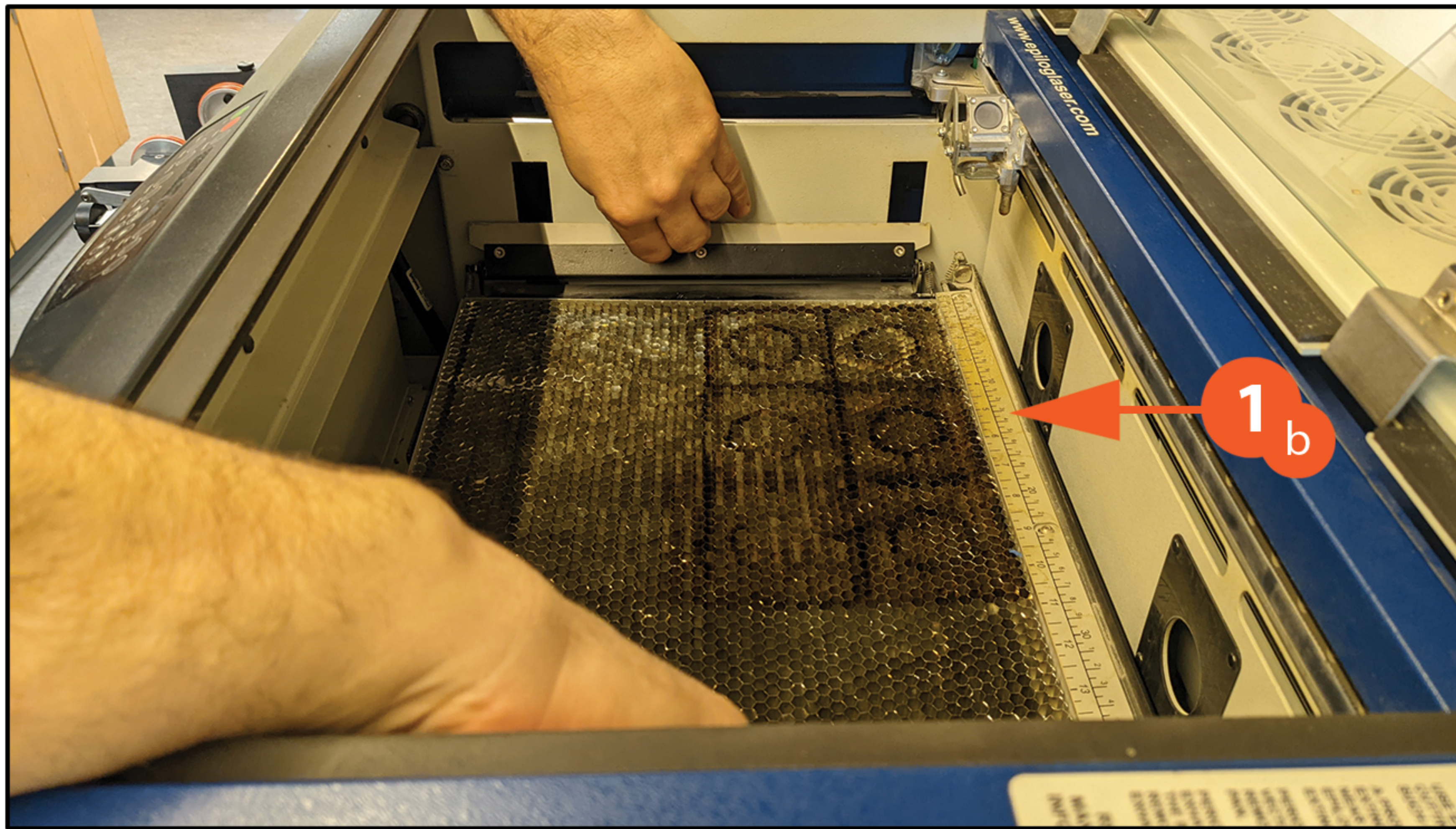
All rights reserved, Langara College 2022



1

How To Laser & Engrave; a Rubber Stamp.

1a - Make sure the honeycomb bed is in the laser.



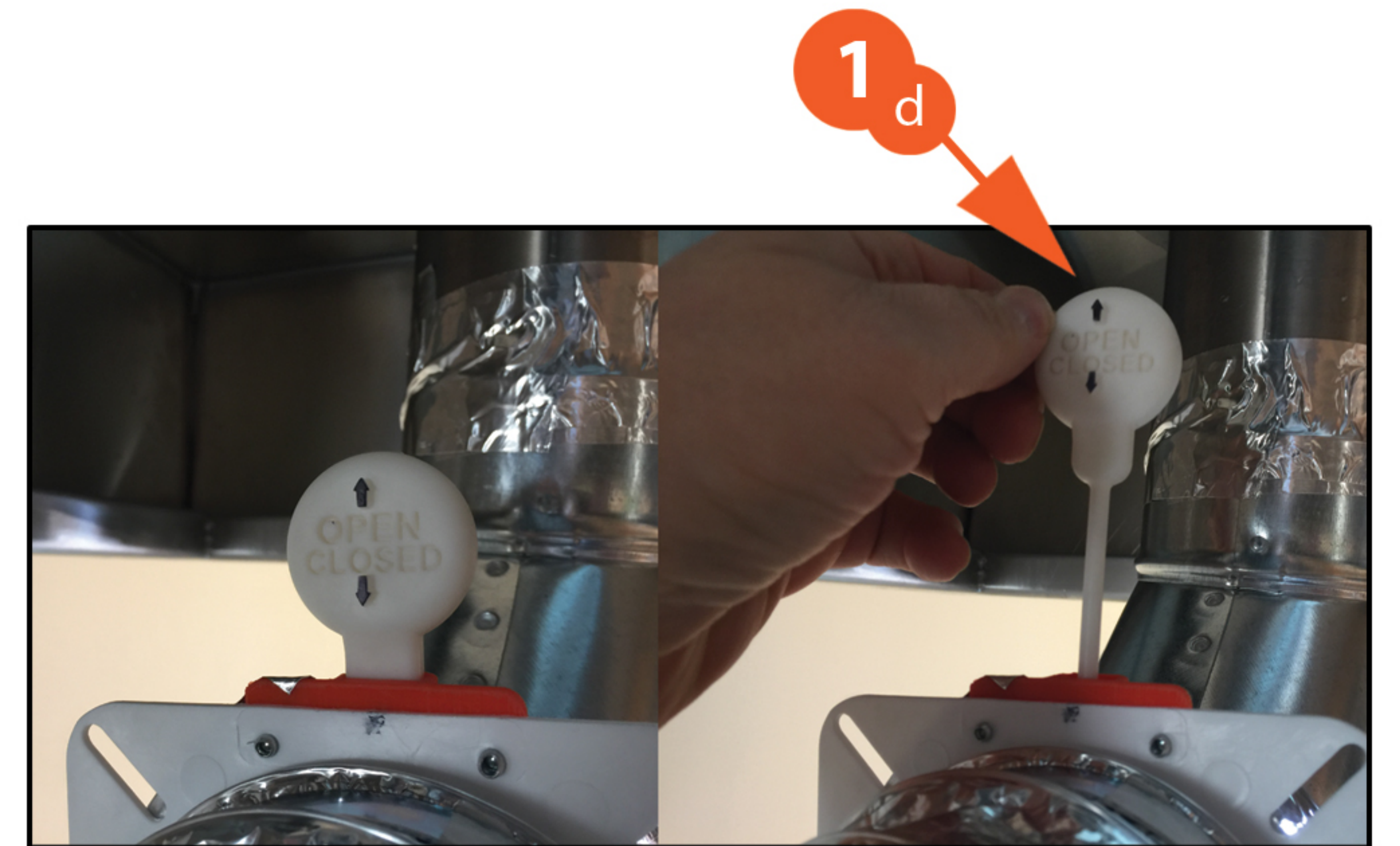
1b - Lift up the "ruler" side and end plates to install or take out.



1c - Turn on the laser, the power switch is on the left side, at the back, at the bottom.



1d - Open the vent on the heating duct tubing to the right of the Epilog Mini. Pull the vent up to open it.



2



2a - Turn on the compressor that is located behind and to the left of the Epilog.



2b - Turn on the fan switch EF-3, that is located on the wall to the right of the Epilog.

3

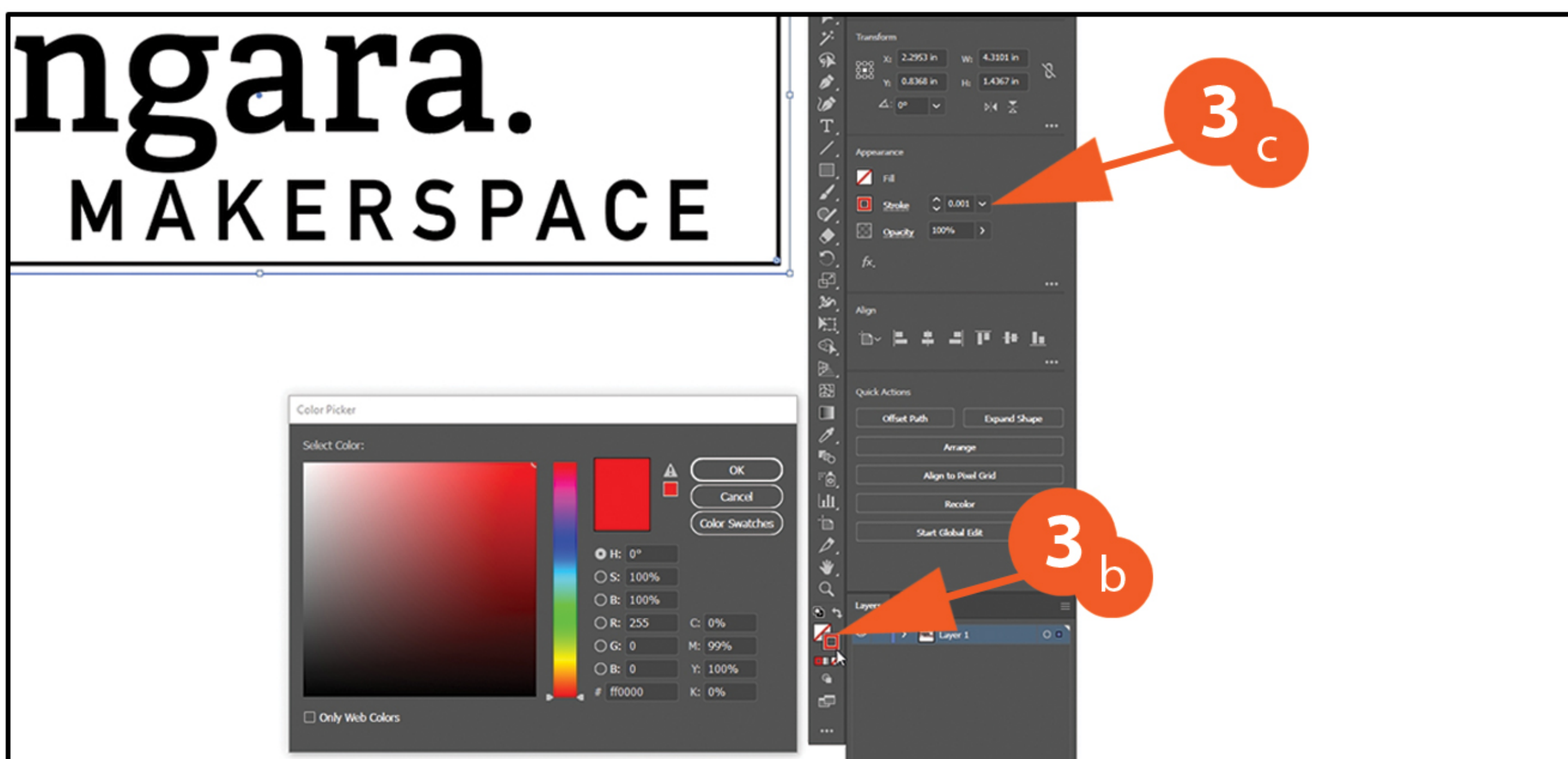


Open up or create your file in Adobe Illustrator.

Your file needs to be RGB.
Color Mode is under FILE/DOCUMENT COLOR MODE

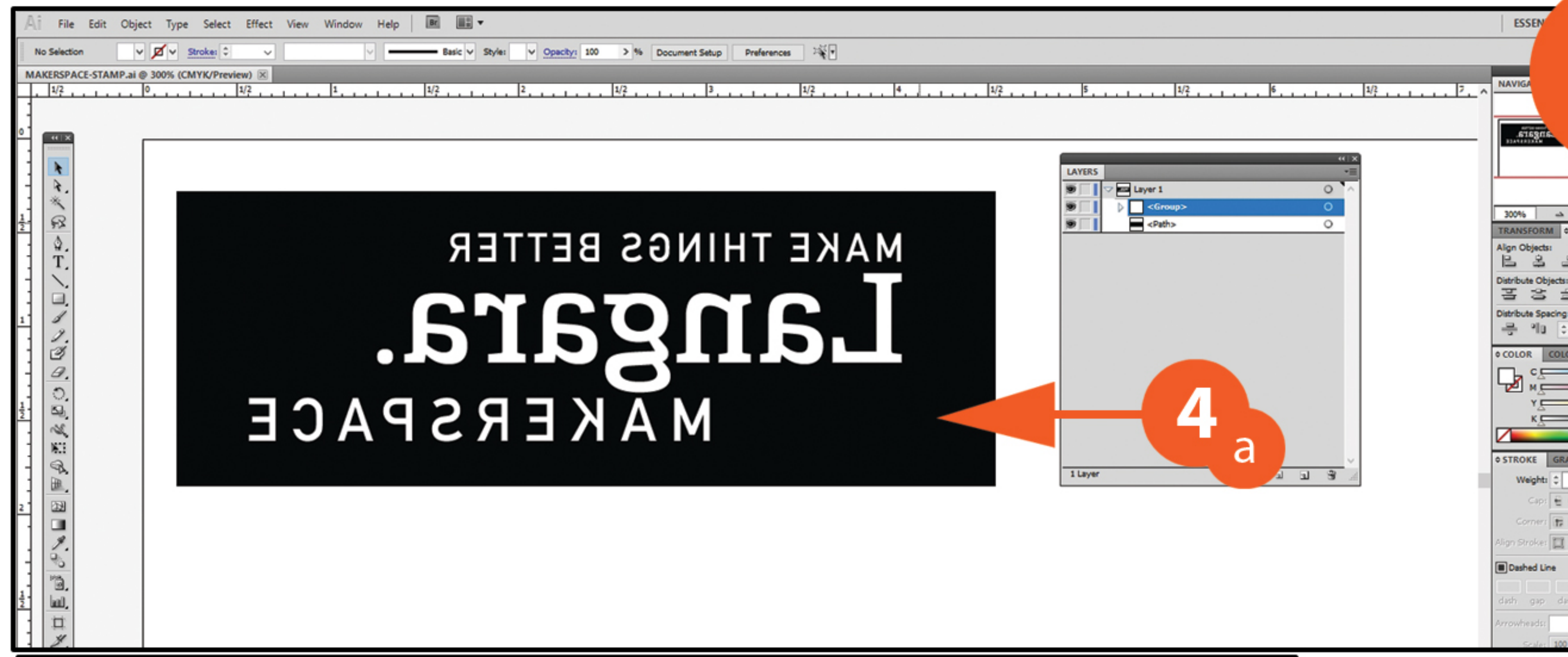
Your file's maximum size should be:
18" wide and 12" high.

3a - Use pure Black (R0, G0, B0) for engraving.

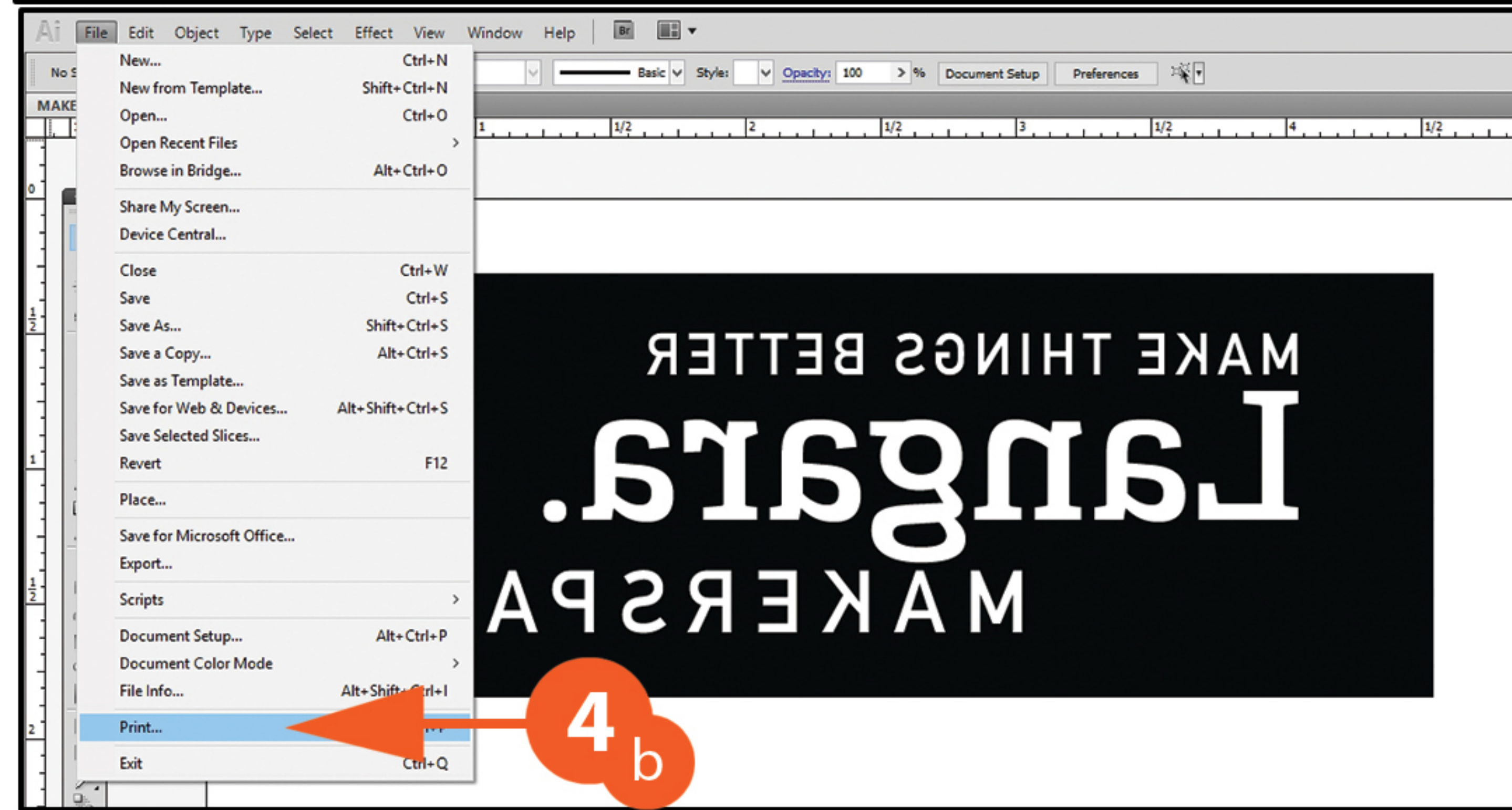


3b - Use pure Red (R255, G0, B0) for cutting.

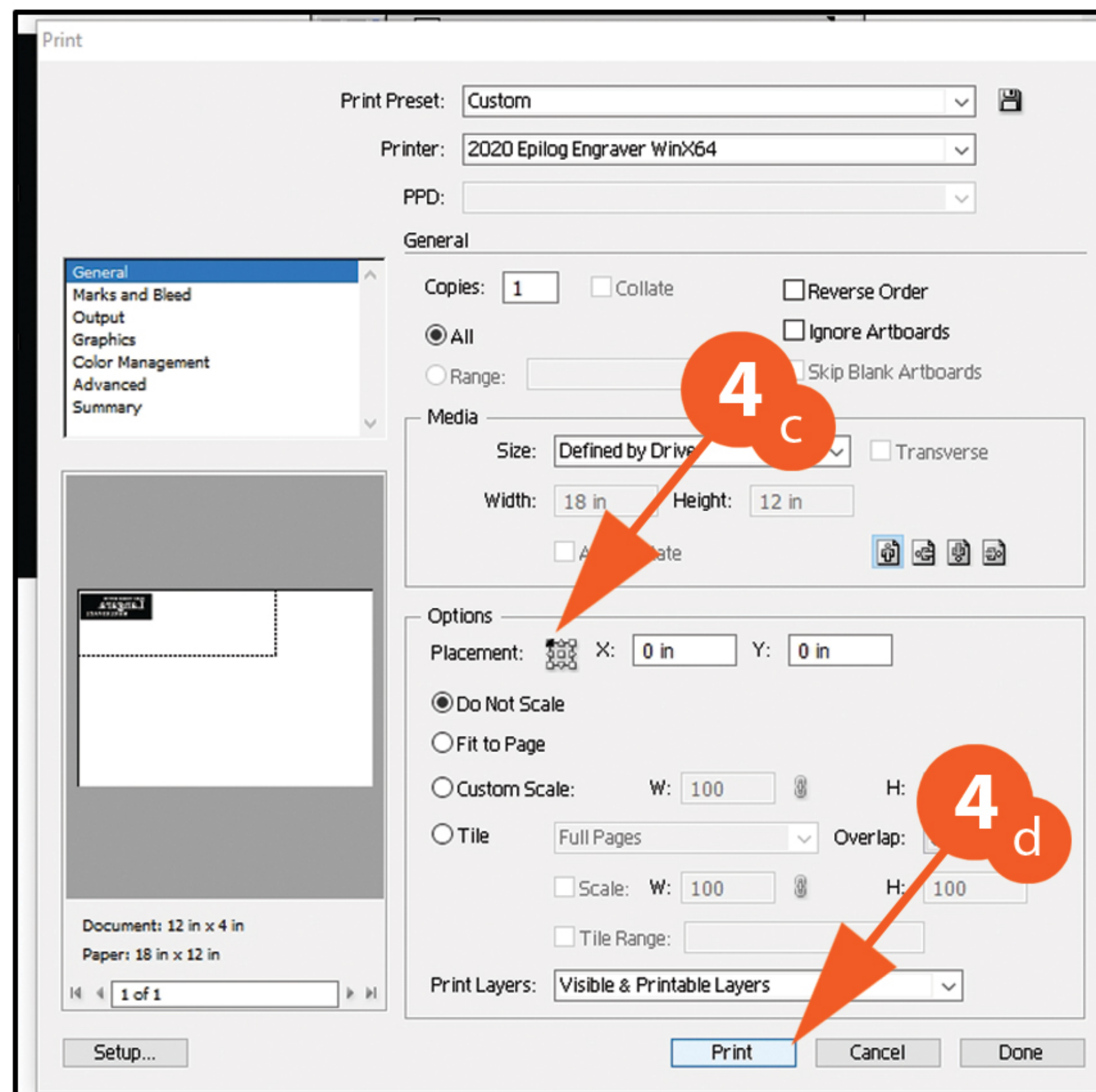
3c - To Cut, your stroke must be .001pt.



4a - Open up your stamp file in Adobe Illustrator. Your stamp should be a mirror image, with the protruding part being white, and the stamp body being black.

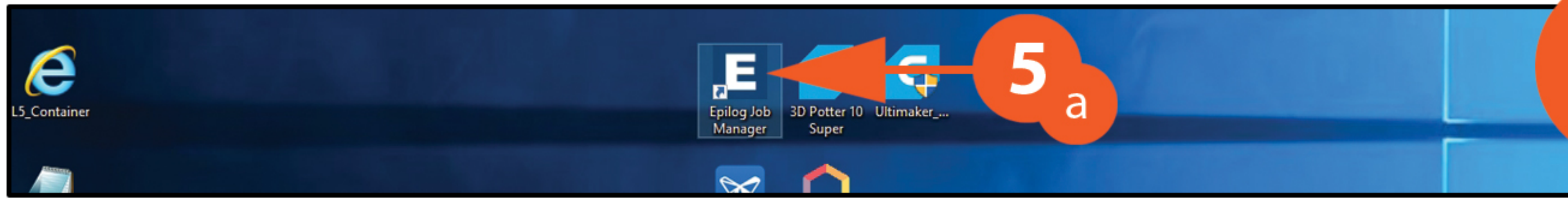


4b - Click on File/Print.



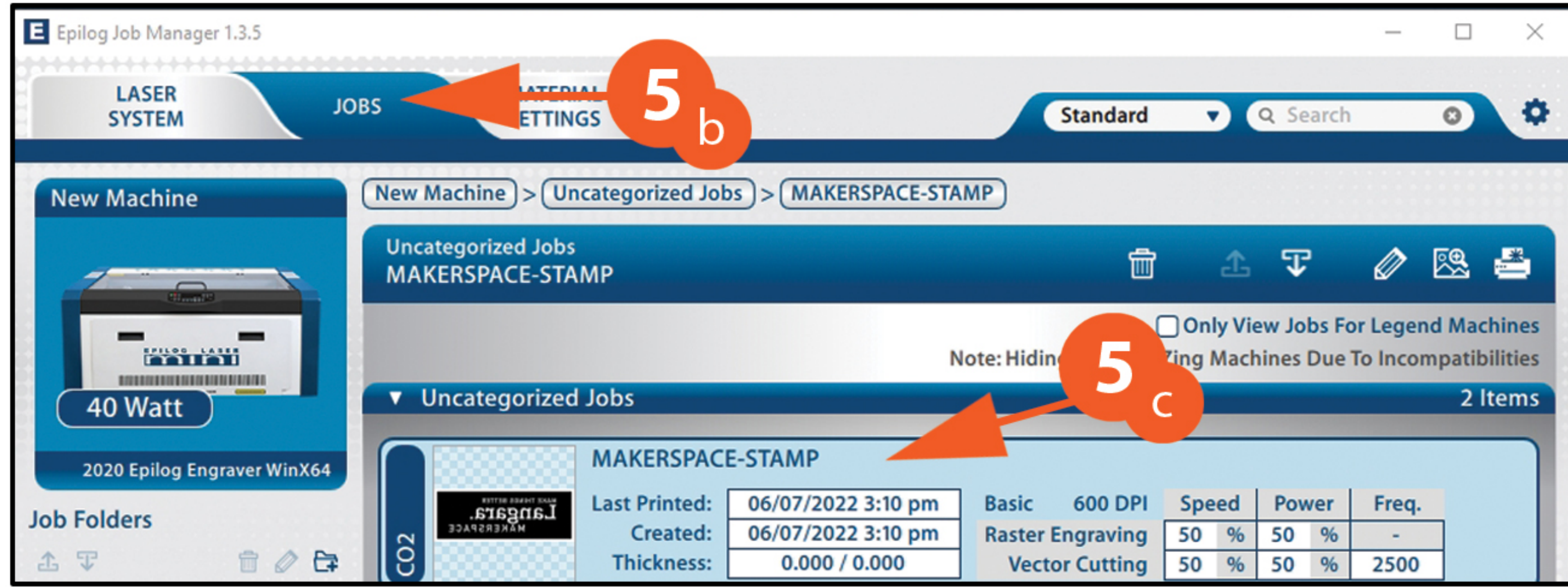
4c - Place your file in the top left corner.

4d - Click on Print.



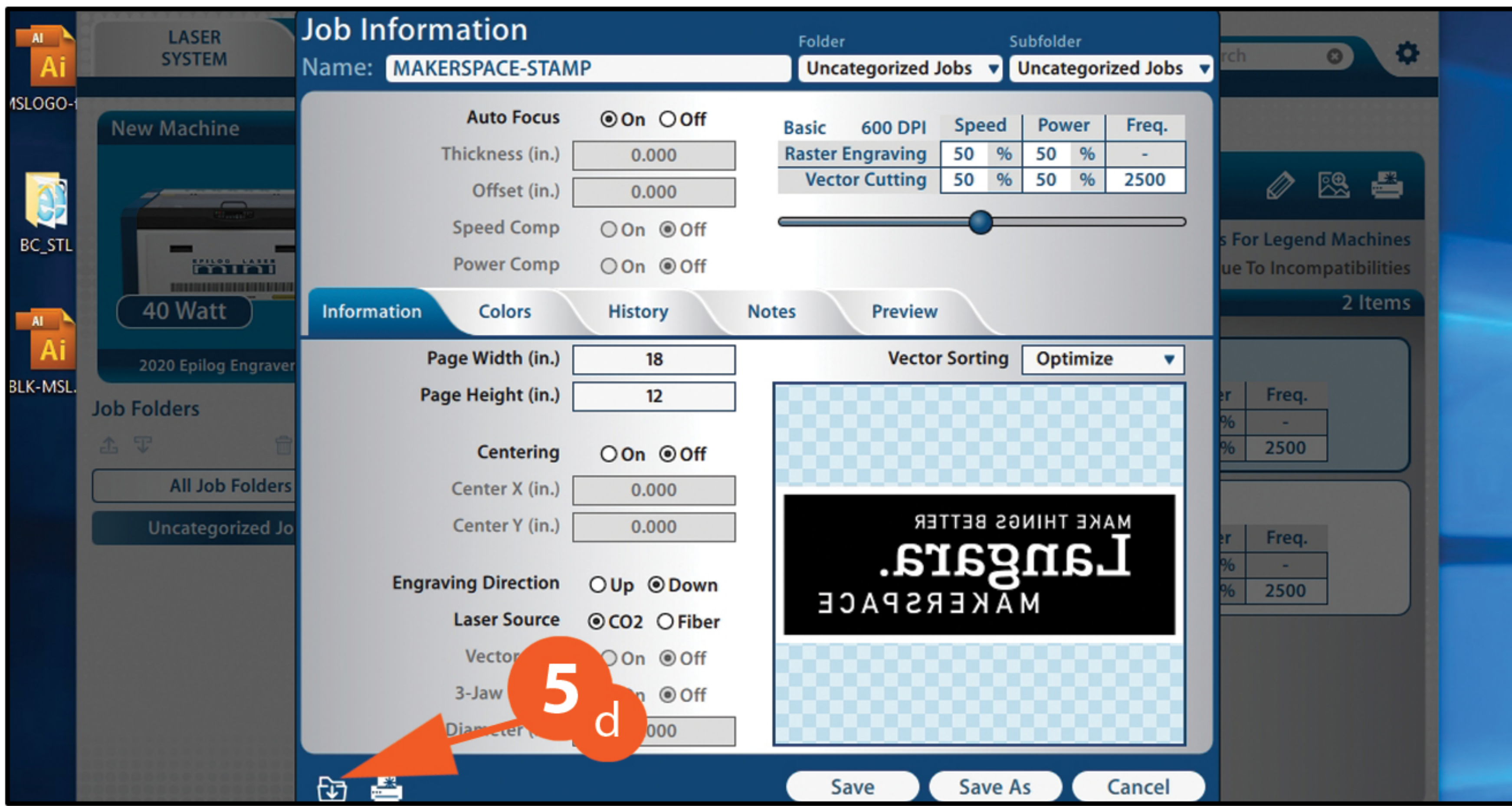
5

5a - Startup Job Manager.

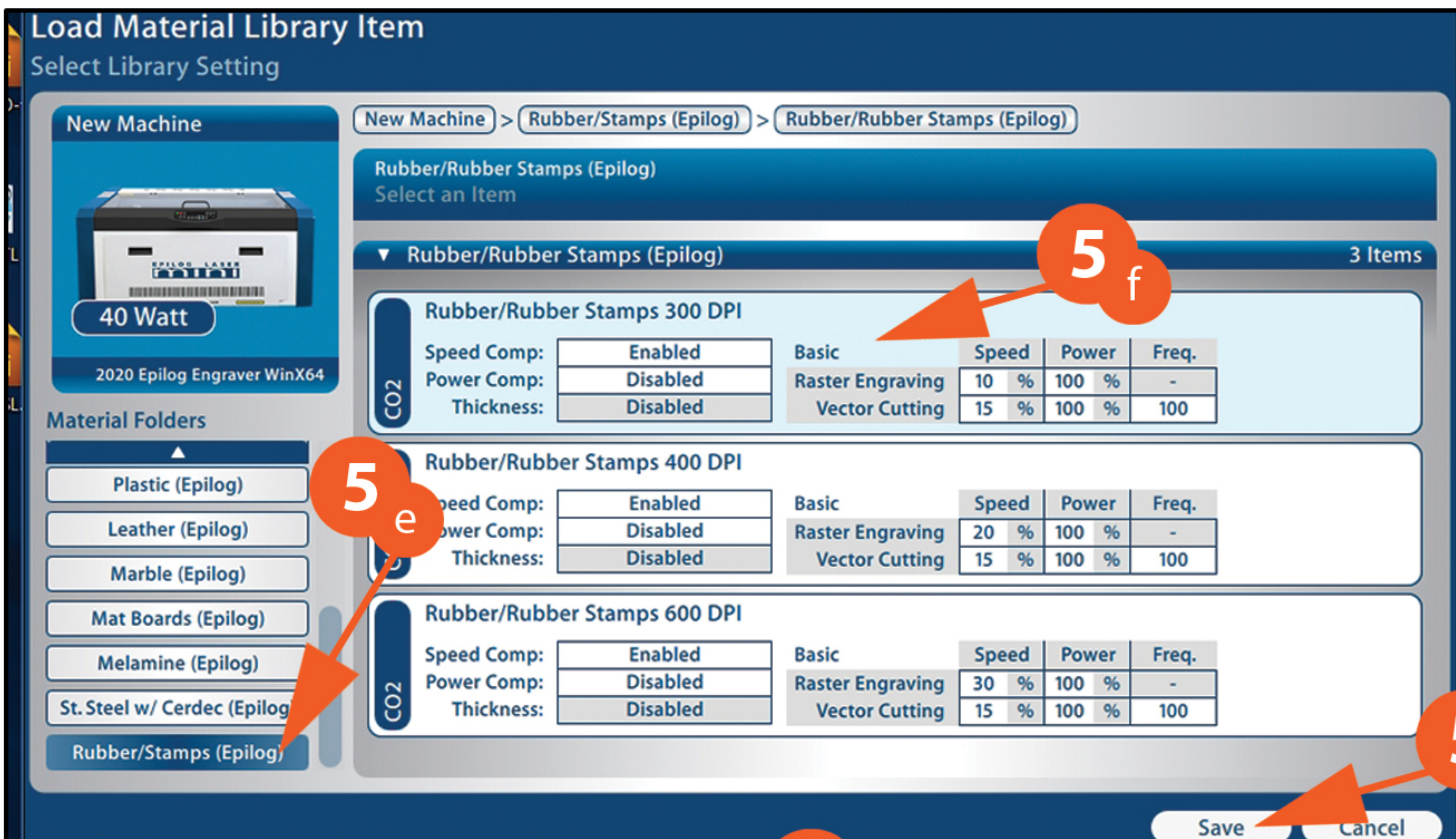


5b - Click on the JOBS tab.

5c - You should see your job below. Double click on it.



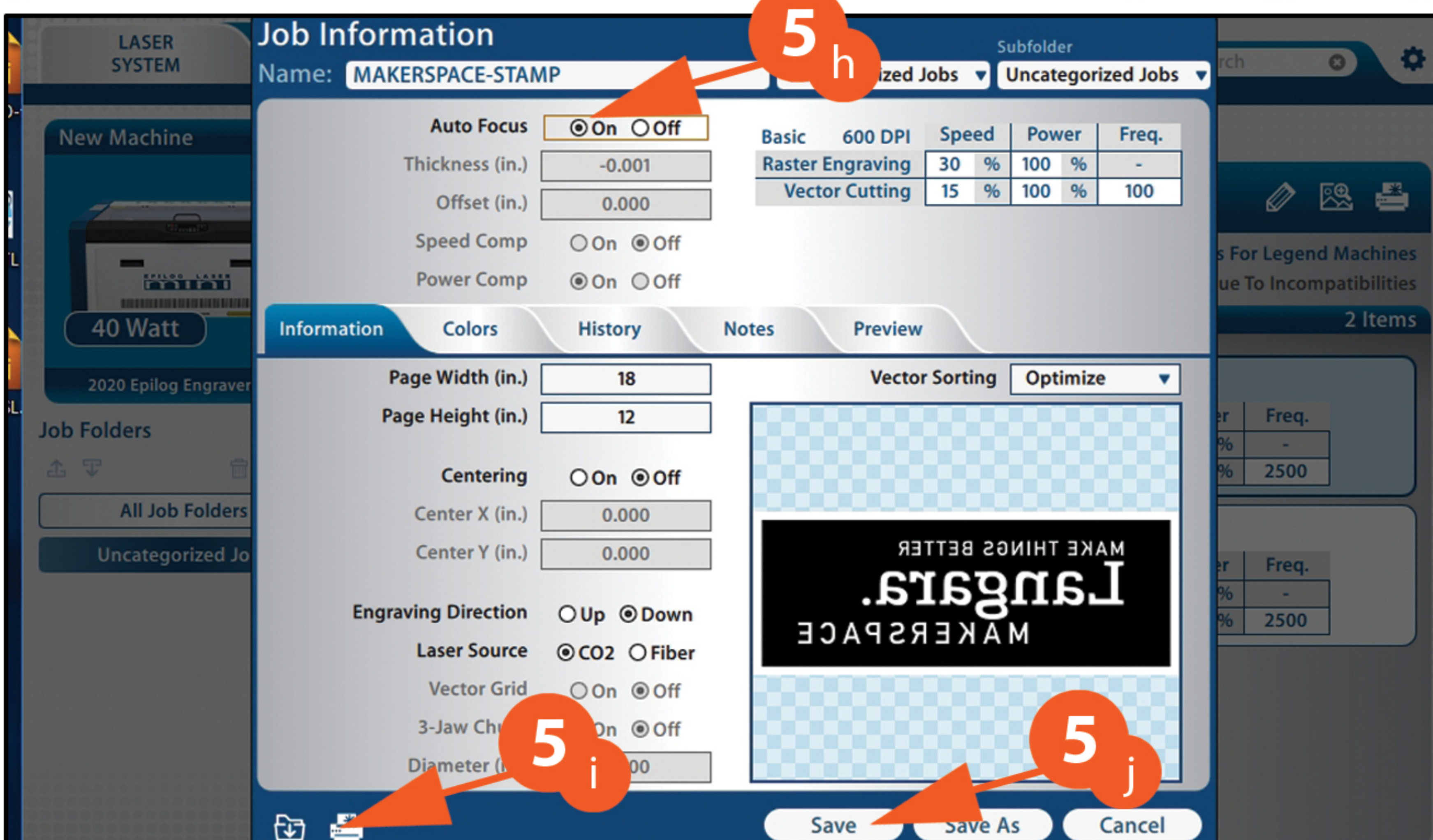
5d - Now click on the Import Material Settings icon.



5e - Select the Material category.

5f - Select the type of material you are using, or as close to the material type as possible.

5g - Click on Save.



5h - Make sure Auto Focus is On.

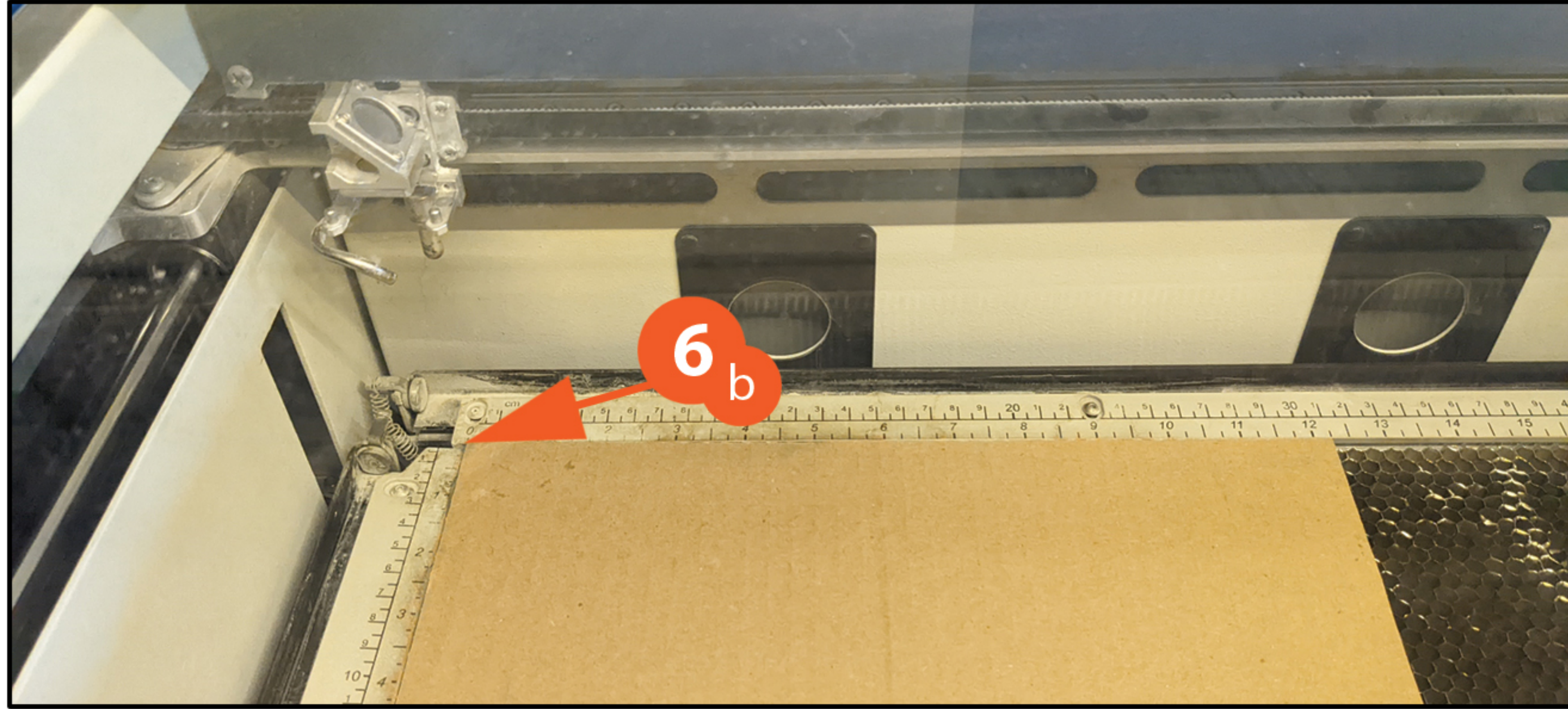
5i - Click on the Print icon.

5j - Click on Save.

6



6a - Your job should now appear in on the Epilog Mini Laser's display/Control panel.



6b - Lift up the glass top and load in your material, butting it up to the rulers on the left top edge.

Make sure your material is lying flat, and is not up on the rulers any where.

Double check:
- The fan is on
- The compressor is on
- The Vent is up on the fan duct tubing (see 1d).

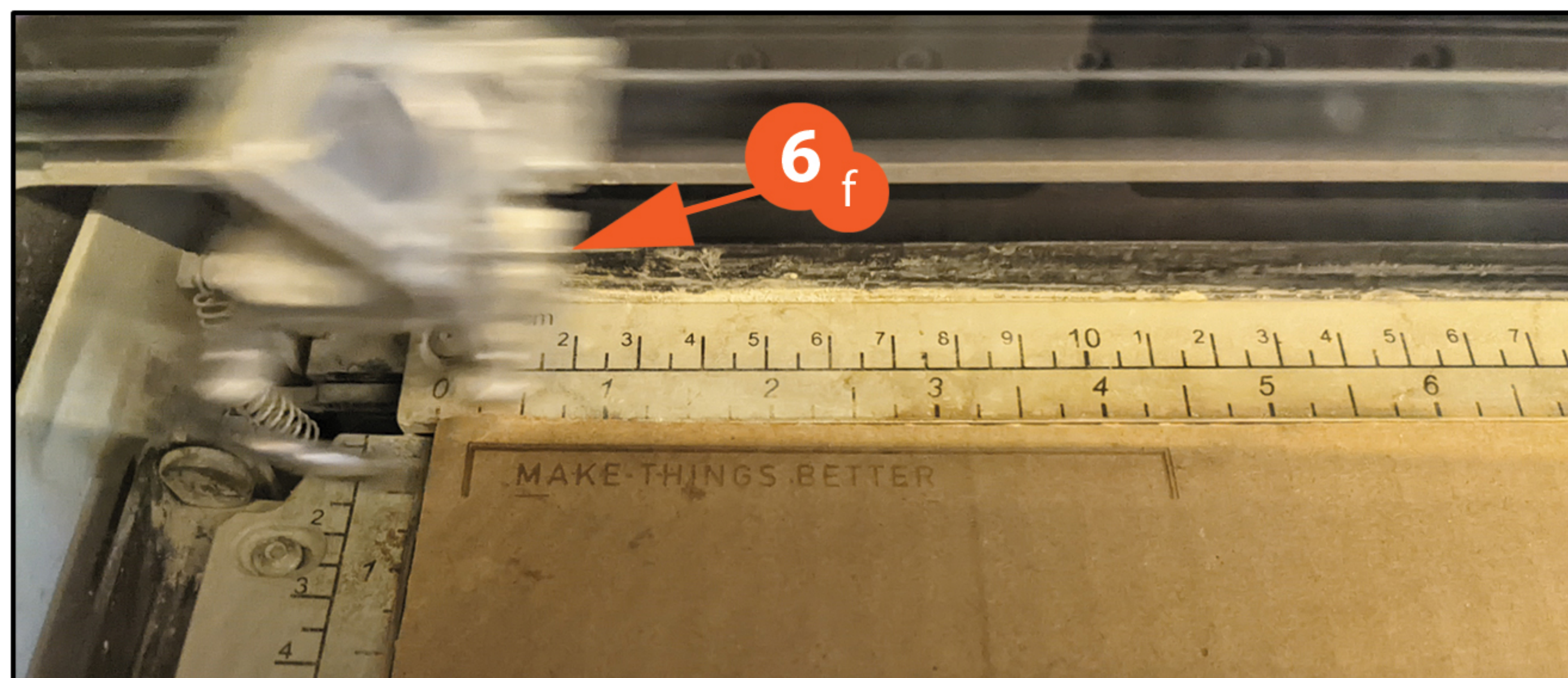


6c - Press the green Go button.



6d - The bed/your material should now raise up to the laser head to Auto Focus....

6e - If it does not auto focus, but instead starts the laser process, press stop and talk to the Tech.



6f - Once it completes the Auto Focus, the head will start any Engrave operations (moving quickly from side to side). This will be followed by any cutting operations.

Once the machine is finished, lift the glass and remove your parts.

Turn off the compressor, the fan and close the vent.