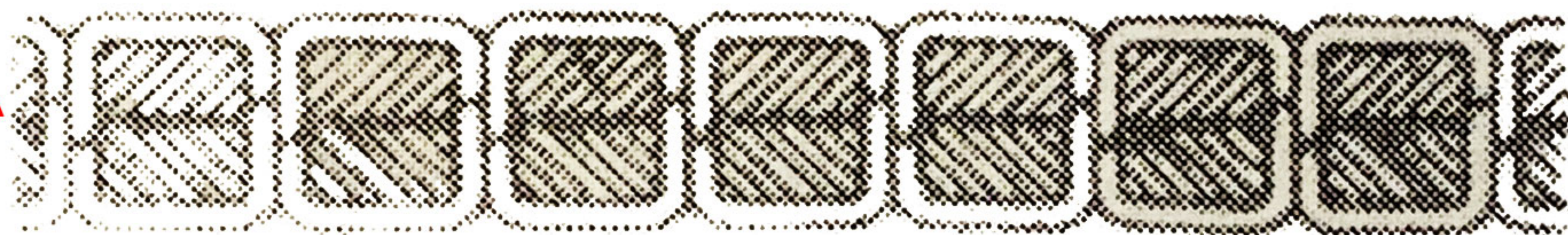


#A



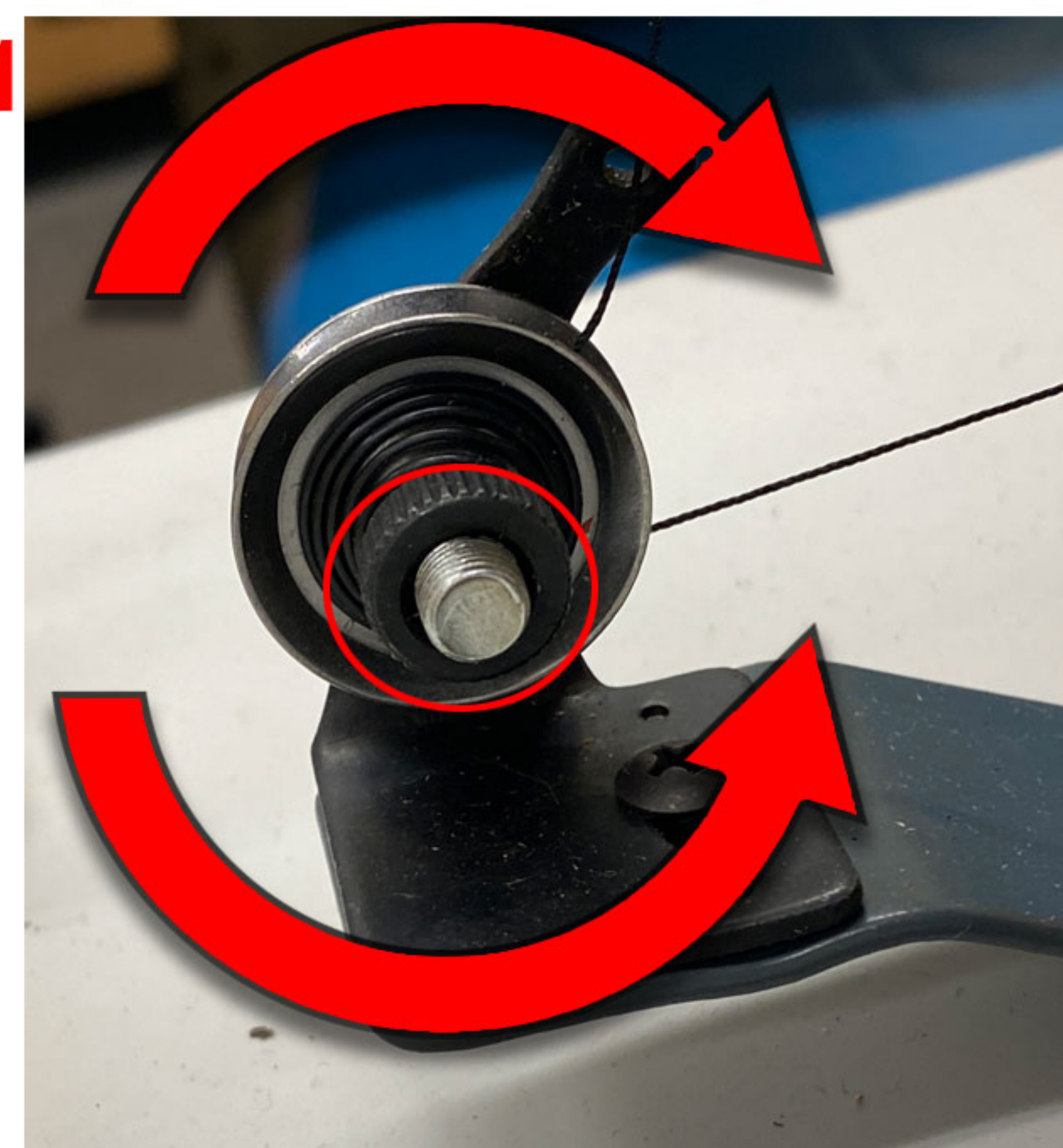
Stitch is good, loop is in the center of the materials.

#B

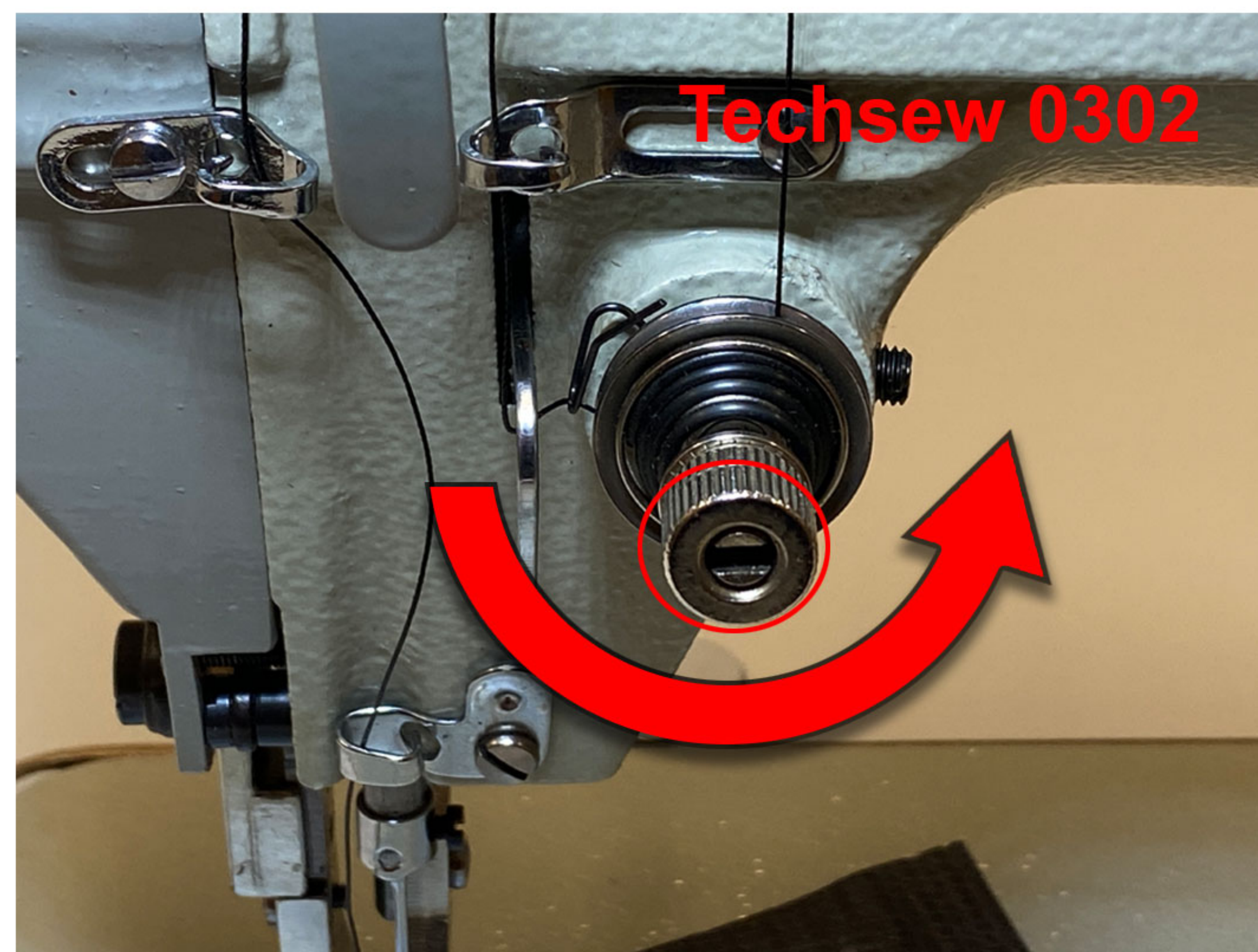


Stitch is bad, loop is at the top of the materials.
Turn The thread tensioner counter clockwise
(or tighten the tension on the bobbin - #1).

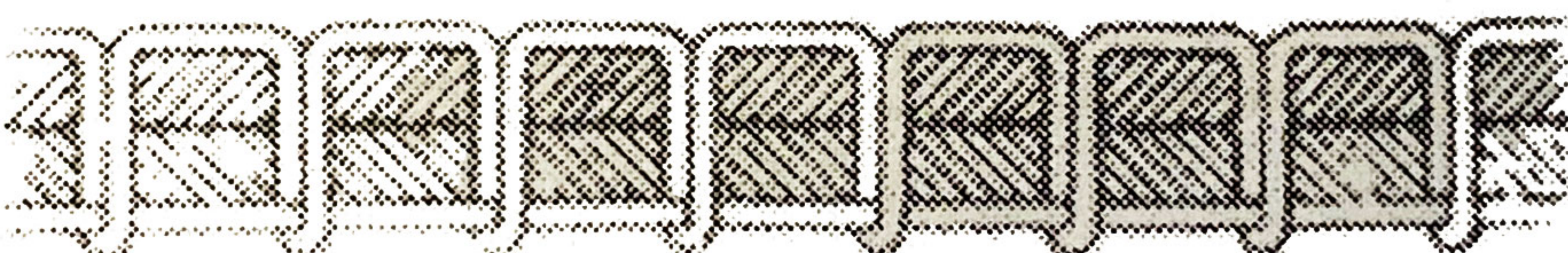
#1



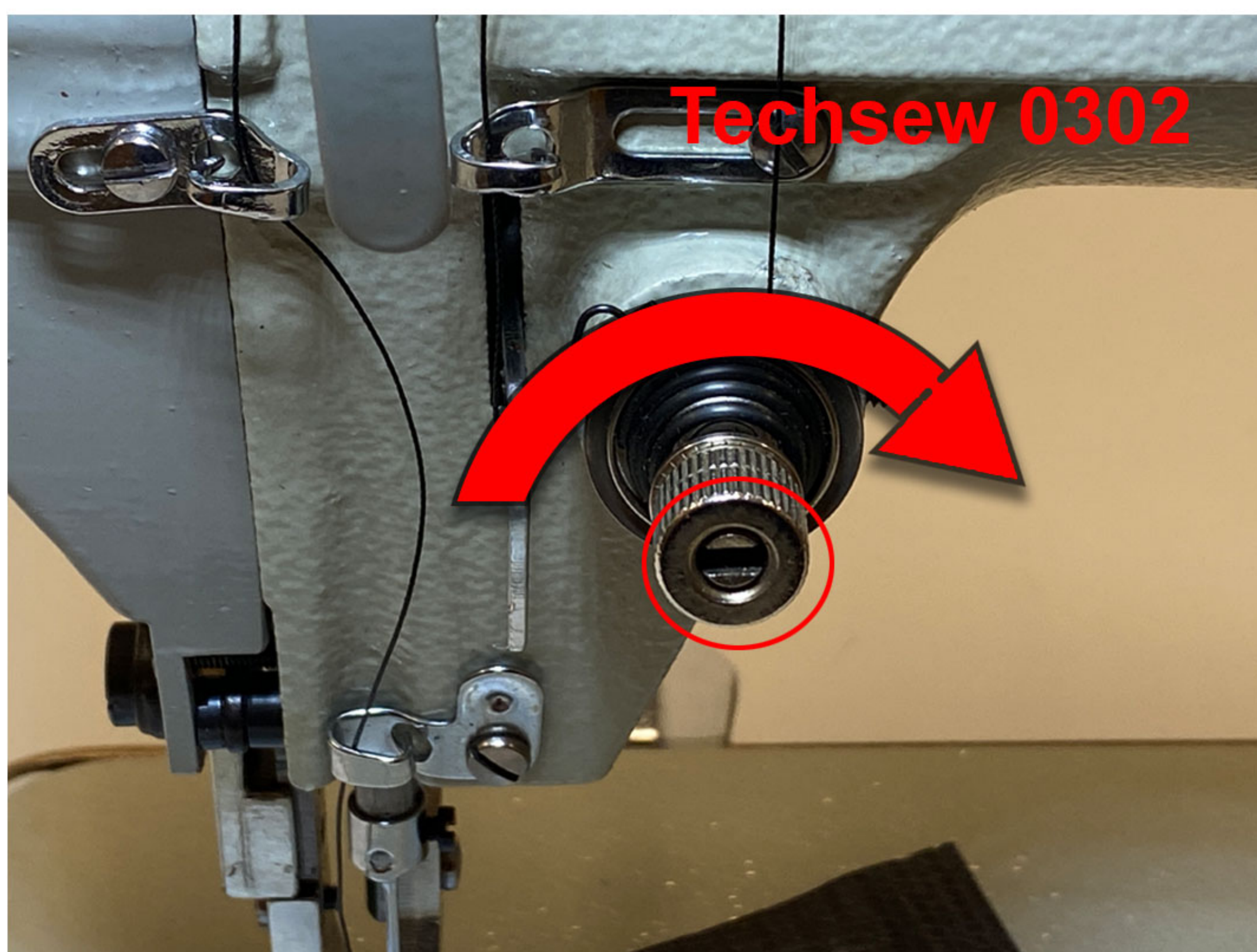
Loosen bobbin (turn out)



#C



Stitch is bad, loop is at the bottom of the materials.
Turn The thread tensioner clockwise (or loosen the tension on the bobbin - #3).



TECHSEW 0302 Walking Foot Sewing Machine

Thread = CBB69 (thinner)

Needle = 135/17 - 110/18

or

Thread = CB138 (medium thick)

Needle = 135/17 - 140/22

TECHSEW 2750 Barrel Arm Sewing Machine

Thread = CB138 (medium thick)

Needle = 135/17 - 140/22

or

Thread = CB207 (thick)

Needle = 135/17 - 180/24