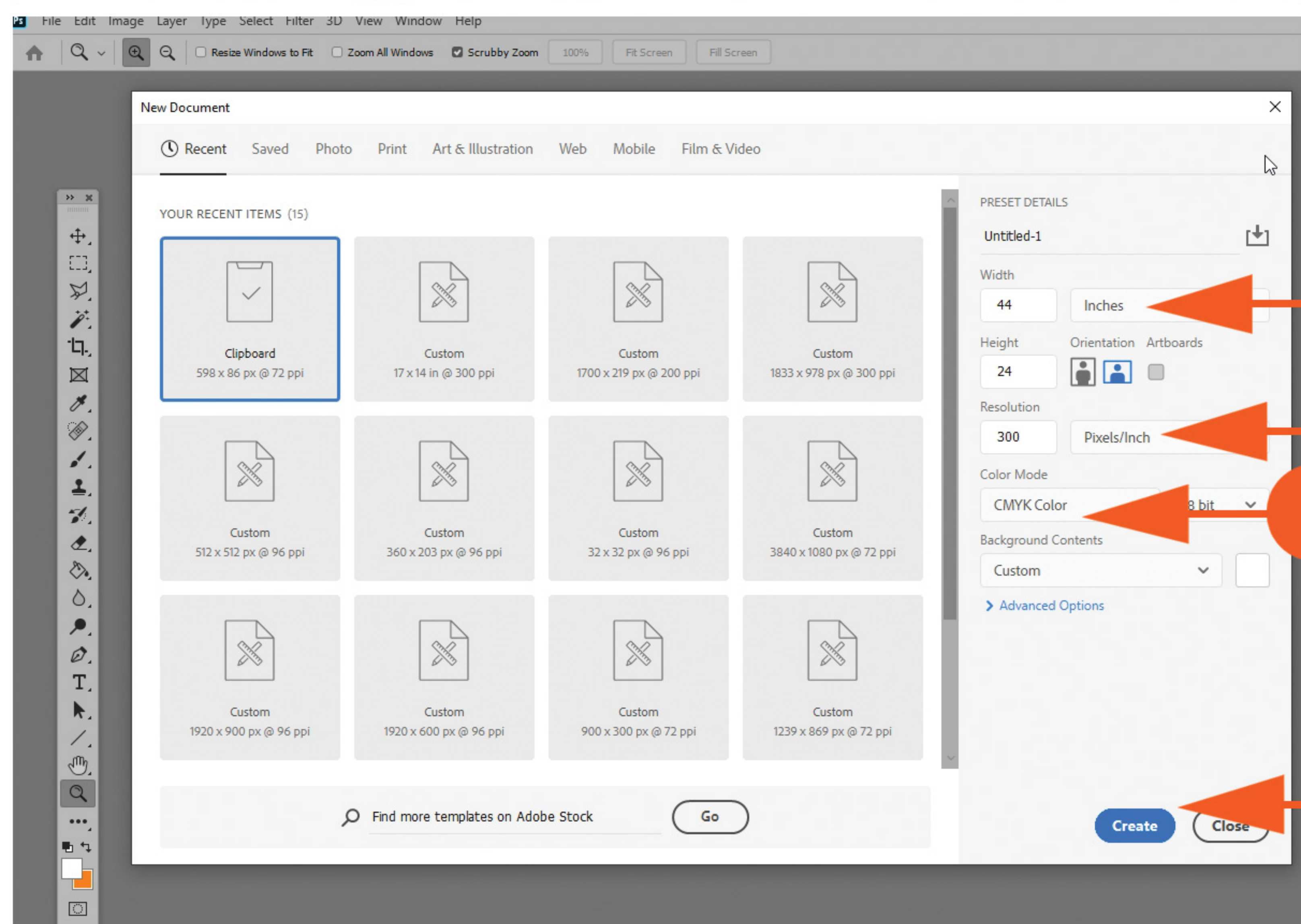
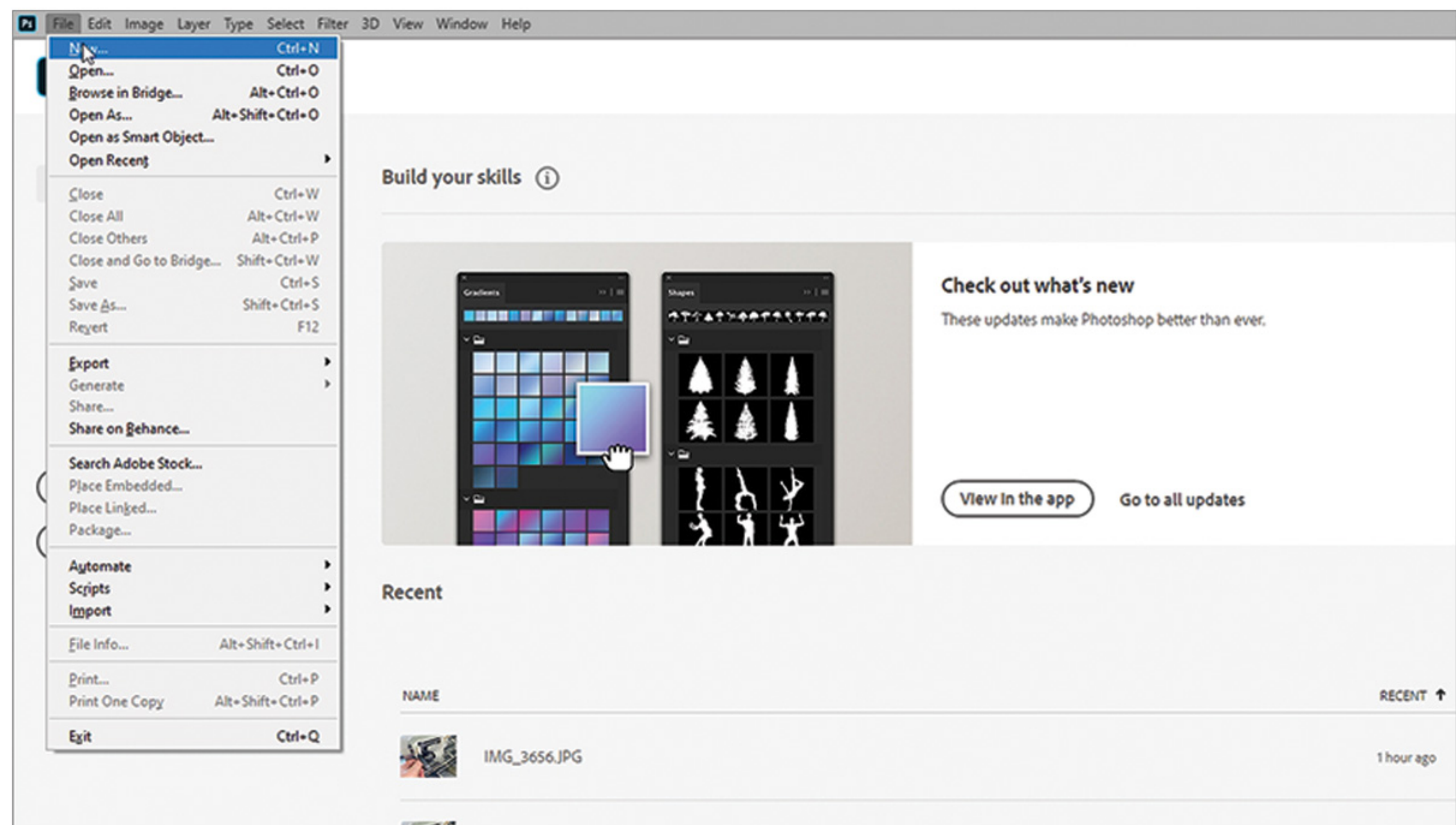


Photoshop File Preparation for the Epson **44”** wide printer Version #5



1

Create A File

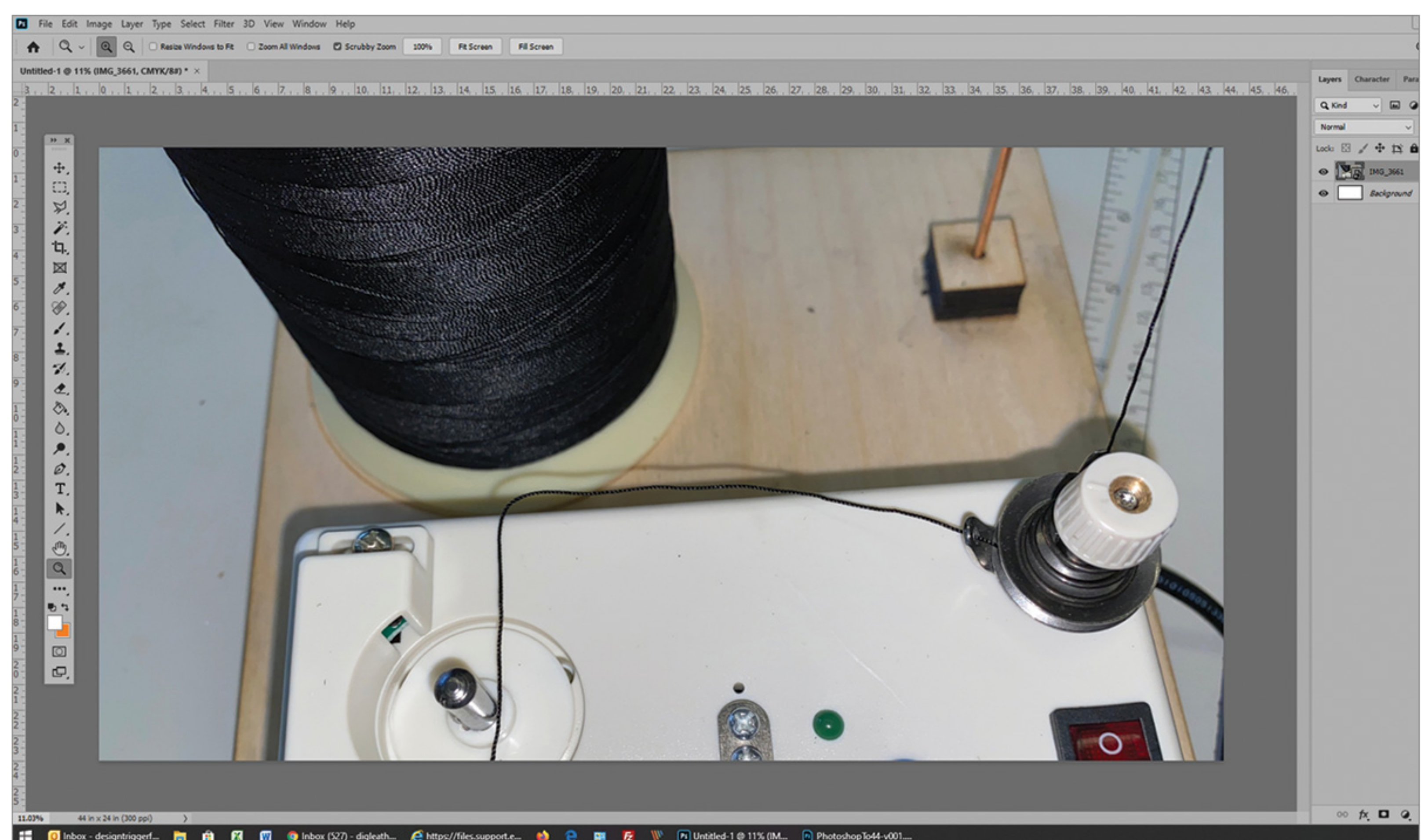
Open up Photoshop and create a New file.

1a - **First** set the resolution to 300 pixels/inch.

1b - Set the width of the file to **44"** (there are rolls of 42" & 44", so please confirm this before sending to Makerspace.)
Set the height to the size you require.

1c - Set you drawing colour mode to CMYK.

1d - Click on create.



2

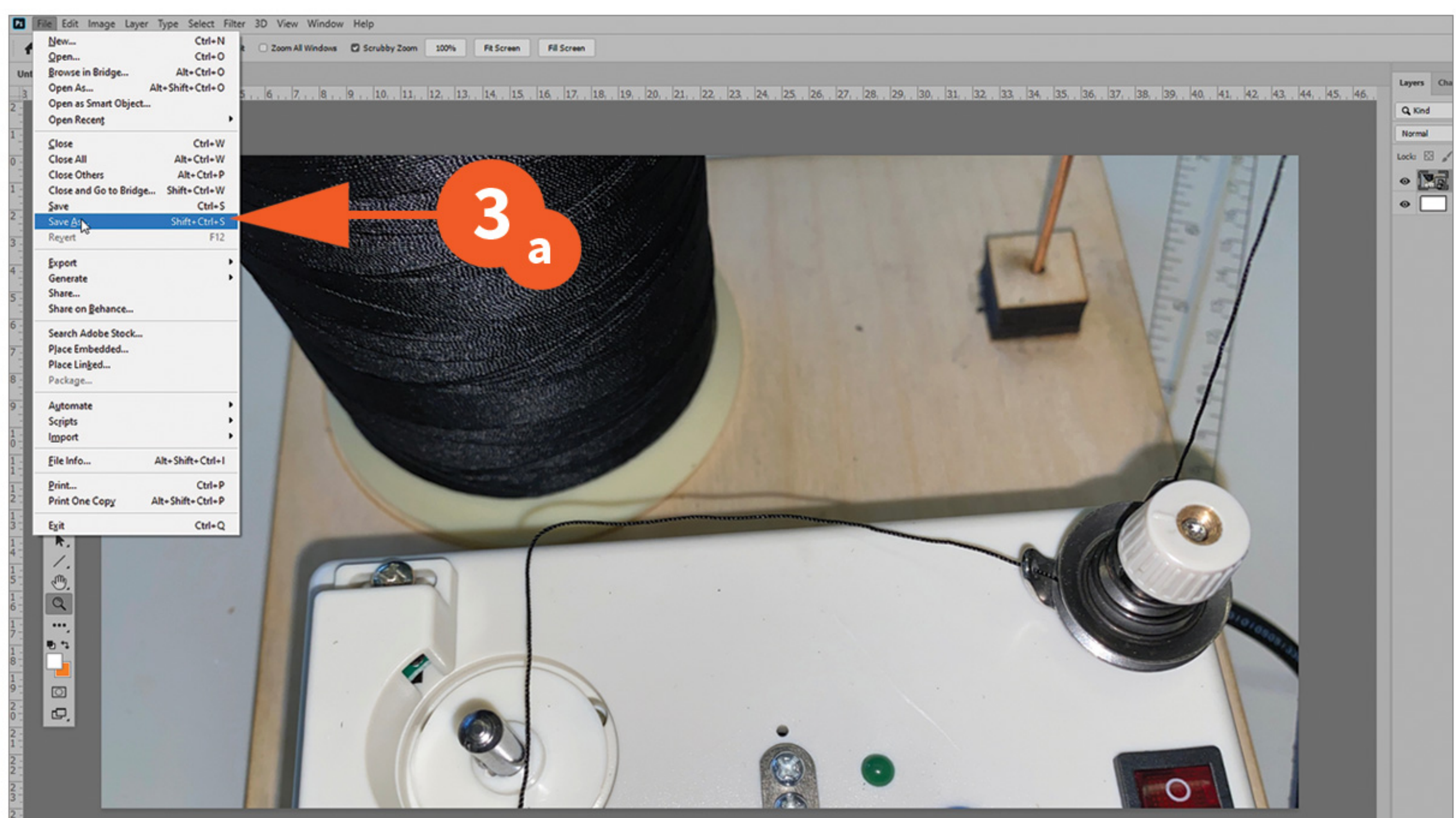
Safe Print Area

Insert or create your content now.

On the Epson 44", you can print right to the edges. This is called a Borderless Print. Our roll/paper size is 44".

If you don't print "edge to edge" then there will be a white border on each side of your print.

Please specify when submitting to makerspace, border or edge to edge print.



3

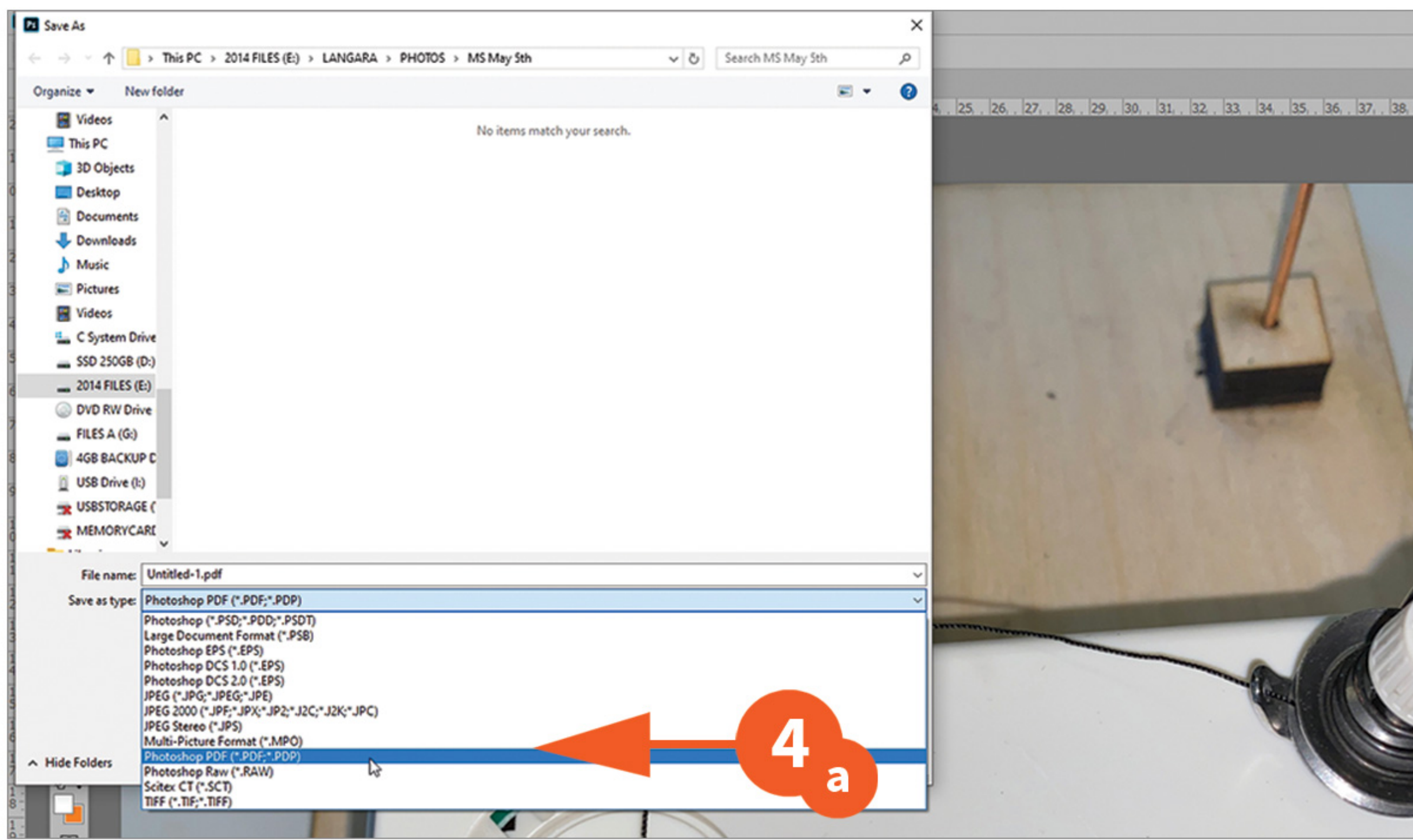
Saving Your File

When your file is complete click on File & Save.

Now to save a copy for outputting...

3a - Go to File, then Save As.

Continued on next page...

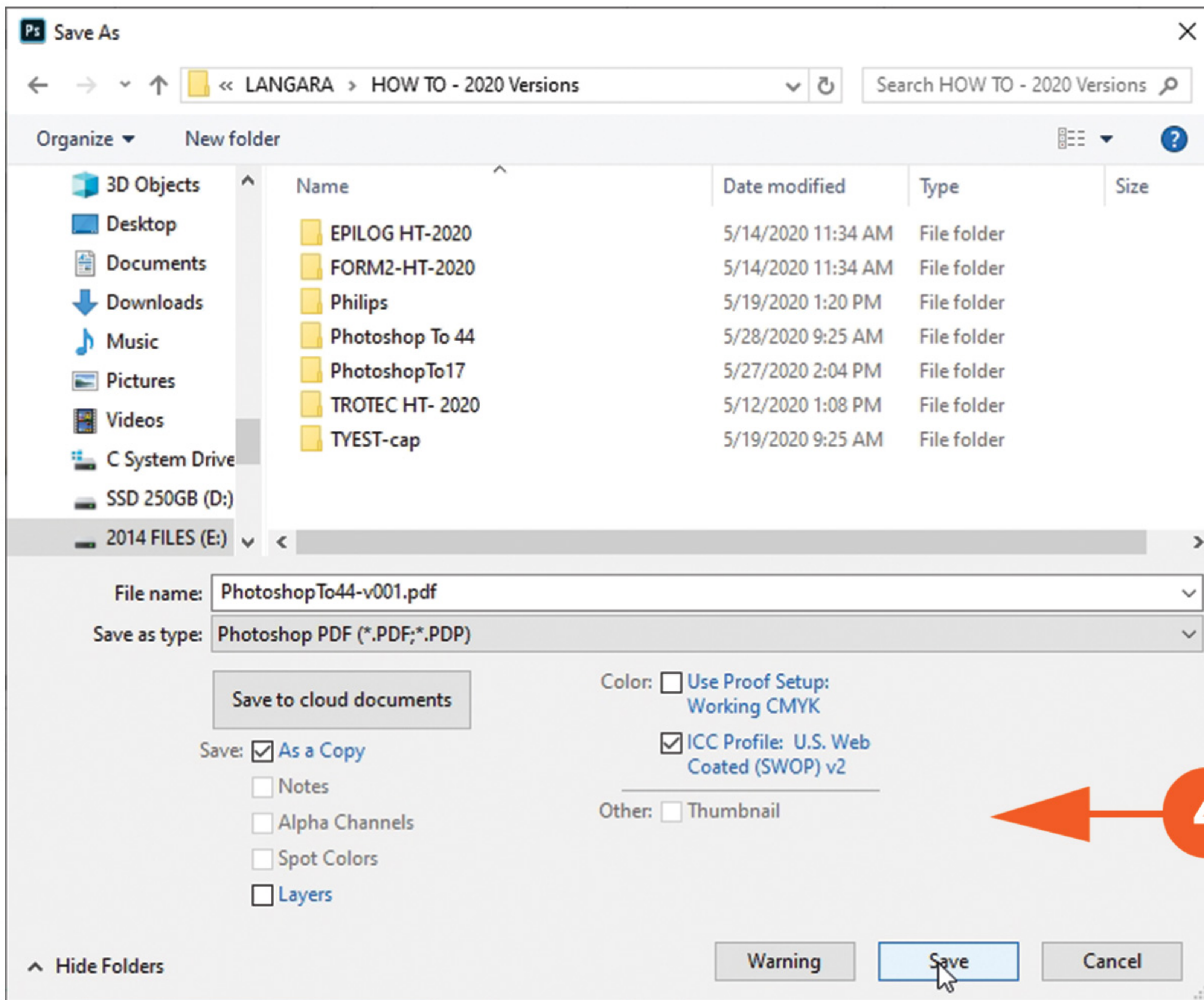


4

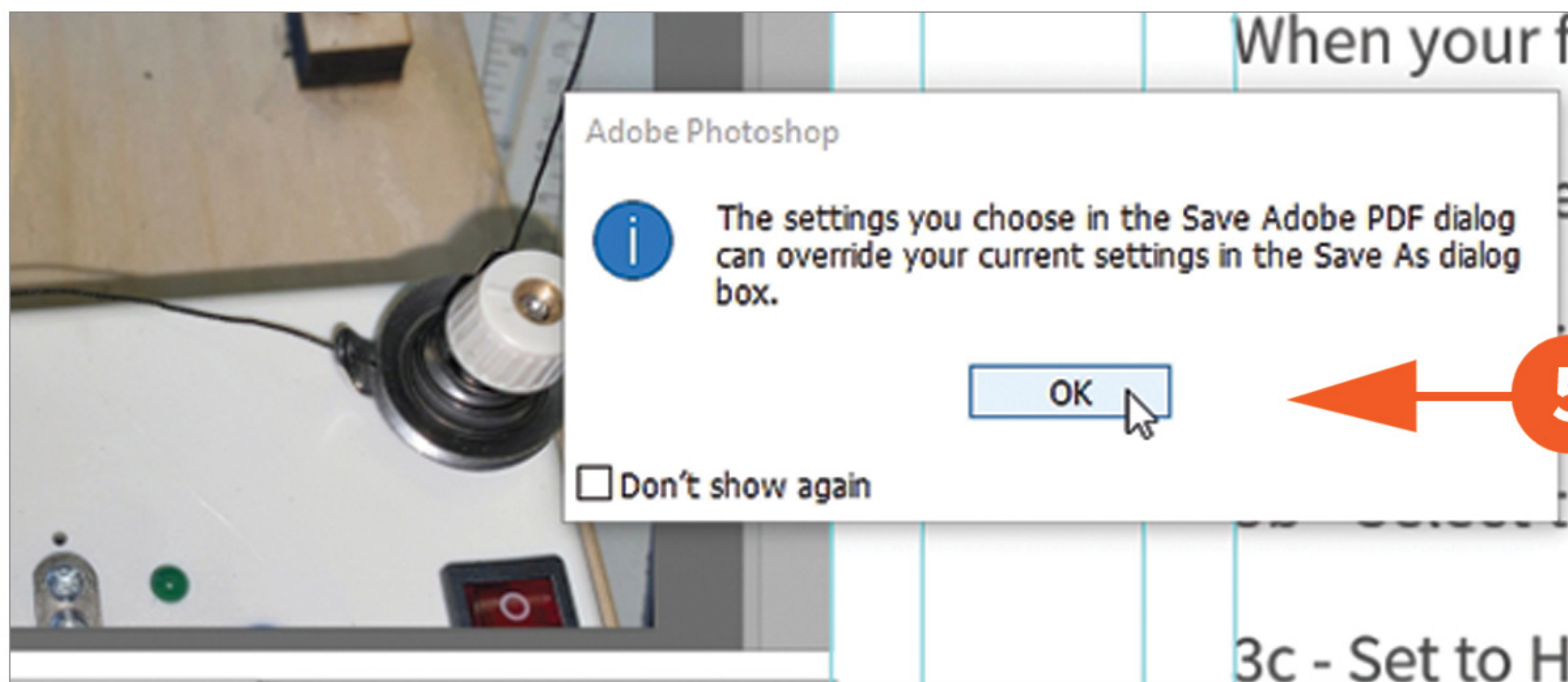
Saving Your File (cont.)

4a - Select the Photoshop PDF option.

4b - Click on (Save) As A Copy, ICC Profile checked and Layer are un-checked.



4b



5

Saving Your File (cont.)

5a - When this warning pops up, click OK

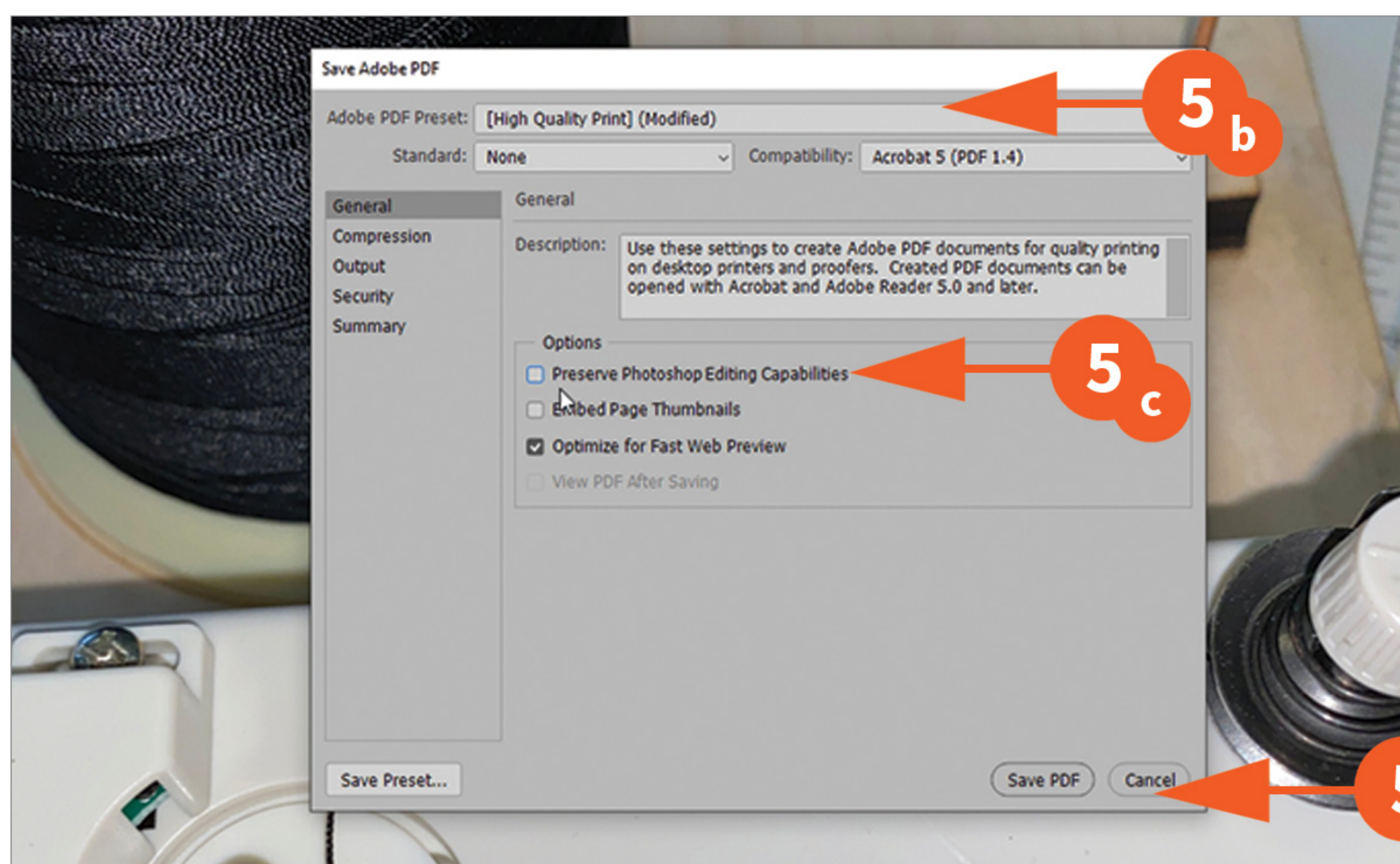
5b - Set to High Quality Print.

5c - Make sure Preserve Photoshop Edit Capabilities is un-checked.

5d - Save PDF.

Your file is ready to now.

If you are submitting it online, you will need to Zip Compress your file.



5d